

MONUMENT 531

CERTIFICATE OF LOCATION OF GOVERNMENT CORNER

Center of Section 25, Township 29 North, Range 22 West, County of Ramsey,
State of Minnesota.

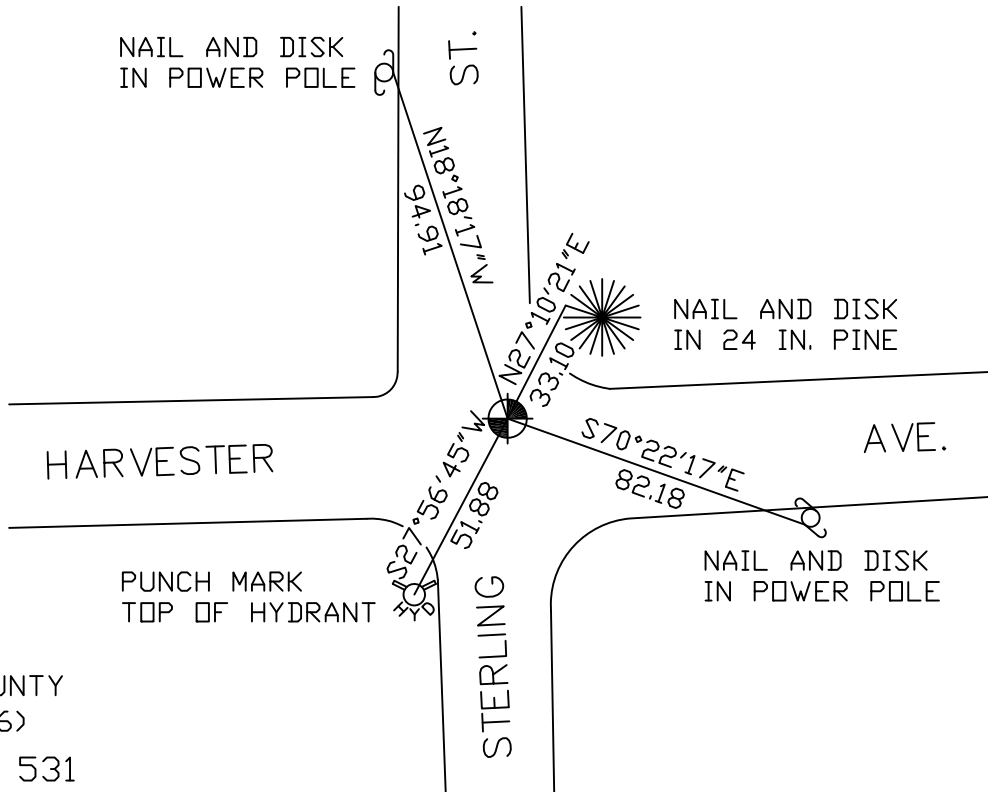
At the corner location shown on the sketch

On August 29, 2007 found cast iron monument within a cast iron manhole
assembly.

left monument as found lowered monument removed monument (explain)

On _____ placed a _____

SKETCH OF REFERENCE TIES



RAMSEY COUNTY
NAD83 (1986)
MONUMENT 531

X= 600535.656 (Easting)
Y= 165609.084 (Northing)

ALL DISTANCES ARE SHOWN IN U.S. SURVEY FEET.
BEARINGS ARE FOR TIE REFERENCE PURPOSES ONLY.

Statements of evidence relative to this corner are on the following page(s).

I hereby certify that this document and the data contained herein was prepared by me or under my direct supervision this _____ day of _____, 20____.

SIGNATURE

Minnesota License No. _____

County Surveyor
 Deputy County Surveyor Land Surveyor

OFFICE OF COUNTY SURVEYOR
County of Ramsey

I hereby certify that this document was filed in the County Surveyor's office on the ____ day of _____, 20____.

David D. Claypool, P.L.S., County Surveyor

By _____, Deputy

MONUMENT 531

Found a 6 in. railroad spike flush; found a 1/2 in. inner diameter by 6 in. long iron, down 0.25 ft.; dug down 4 to 4.5 ft. and found nothing more; placed a 1 1/2 in. diameter by +/- 2 ft. long iron temporarily. No date given in field book.

Set a cast iron monument, July 6, 1976.

Retied monument, April 17, 1990.

Reset 20 in. cast iron monument, down 14 in., after City of Maplewood rebuilt streets, September 16, 1999.

Set a cast iron manhole assembly over monument and retied, June 13, 2002.

Retied monument, August 29, 2007.