

# MONUMENT 4SC

## CERTIFICATE OF LOCATION OF GOVERNMENT CORNER

North Quarter Corner of Section 5, Township 30 North, Range 23 West, County of Ramsey, State of Minnesota.

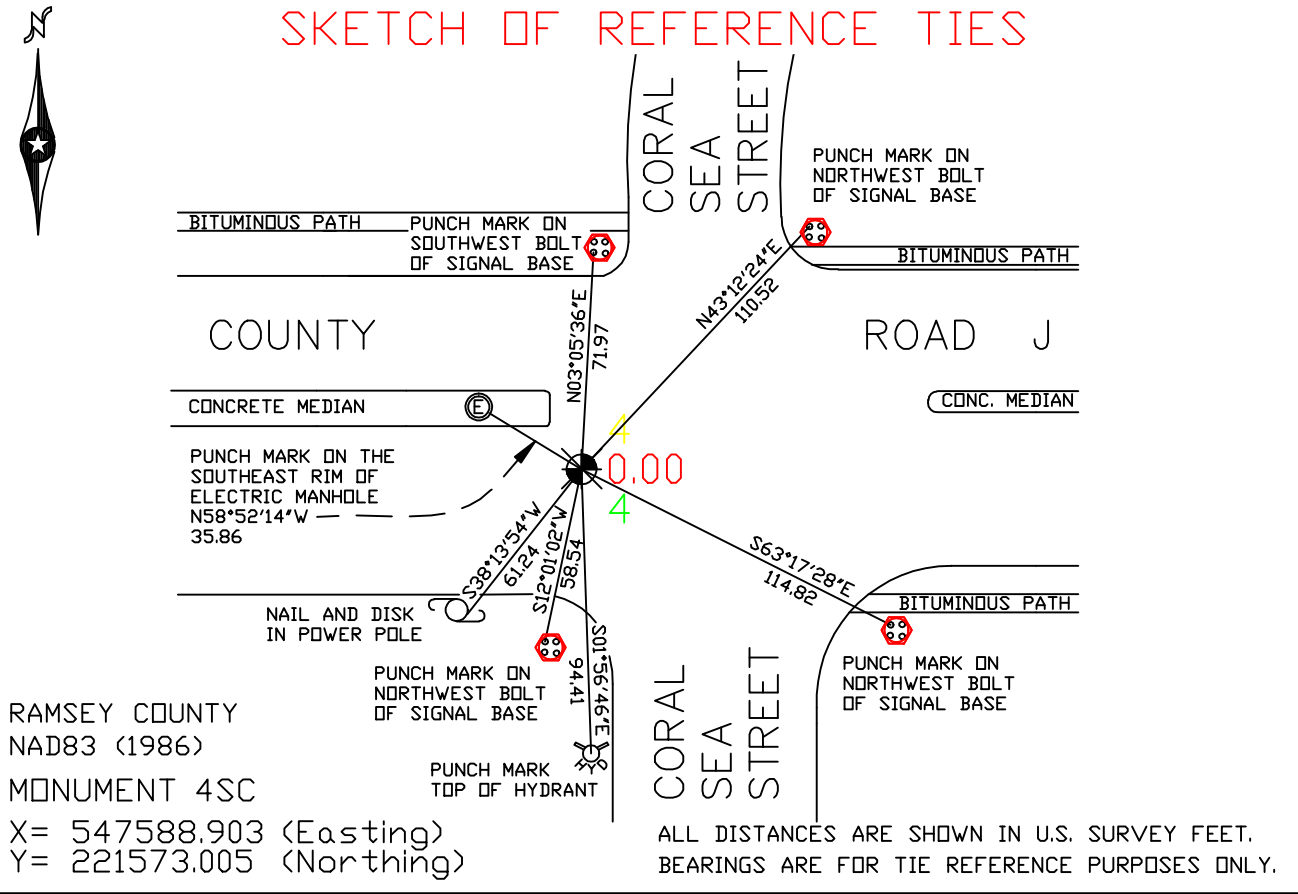
At the corner location shown on the sketch

On June 29, 2007 found a cast iron monument within a cast iron manhole assembly.

left monument as found     lowered monument     removed monument (explain)

On \_\_\_\_\_ placed a \_\_\_\_\_

### SKETCH OF REFERENCE TIES



Statements of evidence relative to this corner are on the following page(s).

I hereby certify that this document and the data contained herein was prepared by me or under my direct supervision this \_\_\_\_\_ day of \_\_\_\_\_, 20\_\_\_\_.

SIGNATURE

Minnesota License No. \_\_\_\_\_

County Surveyor     Land Surveyor

OFFICE OF COUNTY SURVEYOR

County of Ramsey

I hereby certify that this document was filed in the County Surveyor's office on the \_\_\_\_ day of \_\_\_\_\_, 20\_\_\_\_.

David D. Claypool, P.L.S., County Surveyor

By \_\_\_\_\_, Deputy

## MONUMENT 4SC

**Found iron in concrete, no date given in field book.**

**Found a granite monument down 0.57 ft.; placed a short 4 3 /8 in. cast iron, July 31, 1975.**

**Retied monument, December 9, 1975.**

**Monument to be removed by construction, 1991.**

**Relocated position and tied, September 4, 1991.**

**Removed 20 in. cast iron monument and set a 20 in. cast iron monument marked "3rd Corr. Line" 0.14 ft. south of Closing Corner, July 26, 1995.**

**Tied monument 4SC, December 14, 1998.**

**Retied monument, June, 2004.**

**Tied out monument for removal during County Road J reconstruction, June 6, 2006.**

**Set a 20 in. cast iron monument within a cast iron manhole assembly, April 23, 2007.**

**Tied out monument, June 29, 2007.**