

# MONUMENT 462S

## CERTIFICATE OF LOCATION OF GOVERNMENT CORNER

South Witness Corner to the North Quarter Corner of Section 24, Township 29 North, Range 22 West, County of Ramsey, State of Minnesota.

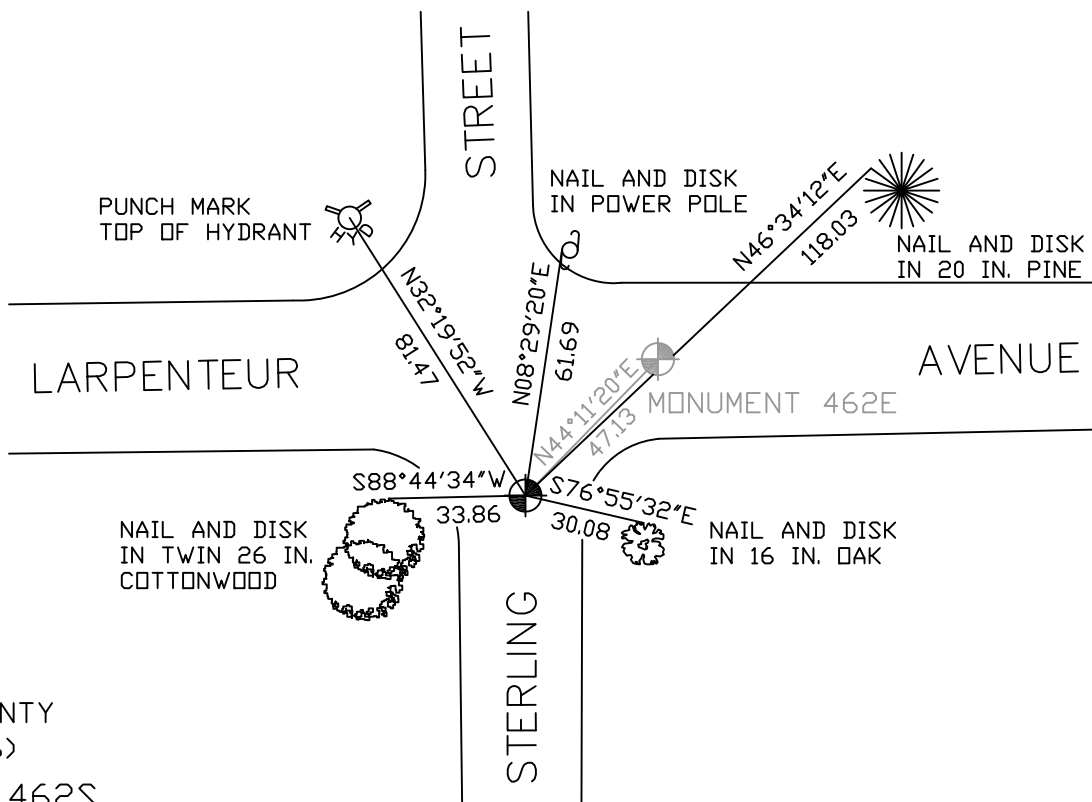
At the corner location shown on the sketch

On August 27, 2007 found a cast iron monument, flush.

left monument as found     lowered monument     removed monument (explain)

On \_\_\_\_\_ placed a \_\_\_\_\_

### SKETCH OF REFERENCE TIES



RAMSEY COUNTY  
NAD83 (1986)  
MONUMENT 462S

X= 600503.717 (Easting)  
Y= 173502.333 (Northing)

ALL DISTANCES ARE SHOWN IN U.S. SURVEY FEET.  
BEARINGS ARE FOR TIE REFERENCE PURPOSES ONLY.

Statements of evidence relative to this corner are on the following page(s).

I hereby certify that this document and the data contained herein was prepared by me or under my direct supervision this \_\_\_\_\_ day of \_\_\_\_\_, 20\_\_\_\_.

SIGNATURE

Minnesota License No. \_\_\_\_\_

- County Surveyor  
 Deputy County Surveyor     Land Surveyor

OFFICE OF COUNTY SURVEYOR

County of Ramsey

I hereby certify that this document was filed in the County Surveyor's office on the \_\_\_\_ day of \_\_\_\_\_, 20\_\_\_\_.

David D. Claypool, P.L.S., County Surveyor

By \_\_\_\_\_, Deputy

# MONUMENT 462S

Found a manhole at corner location. Traversed Sections 13 and 24 and set a cast iron monument 33 ft. south on line. No date given in field book.

Retied monument, July 16, 1984.

Monument destroyed by construction, 1988.

Placed a 20 in. cast iron monument, October 26, 1988.

Retied monument, November 7, 2002.

Retied monument, August 27, 2007.