

MONUMENT 462E

CERTIFICATE OF LOCATION OF GOVERNMENT CORNER

East Witness Corner to the North Quarter Corner of Section 24, Township 29 North, Range 22 West, County of Ramsey, State of Minnesota.

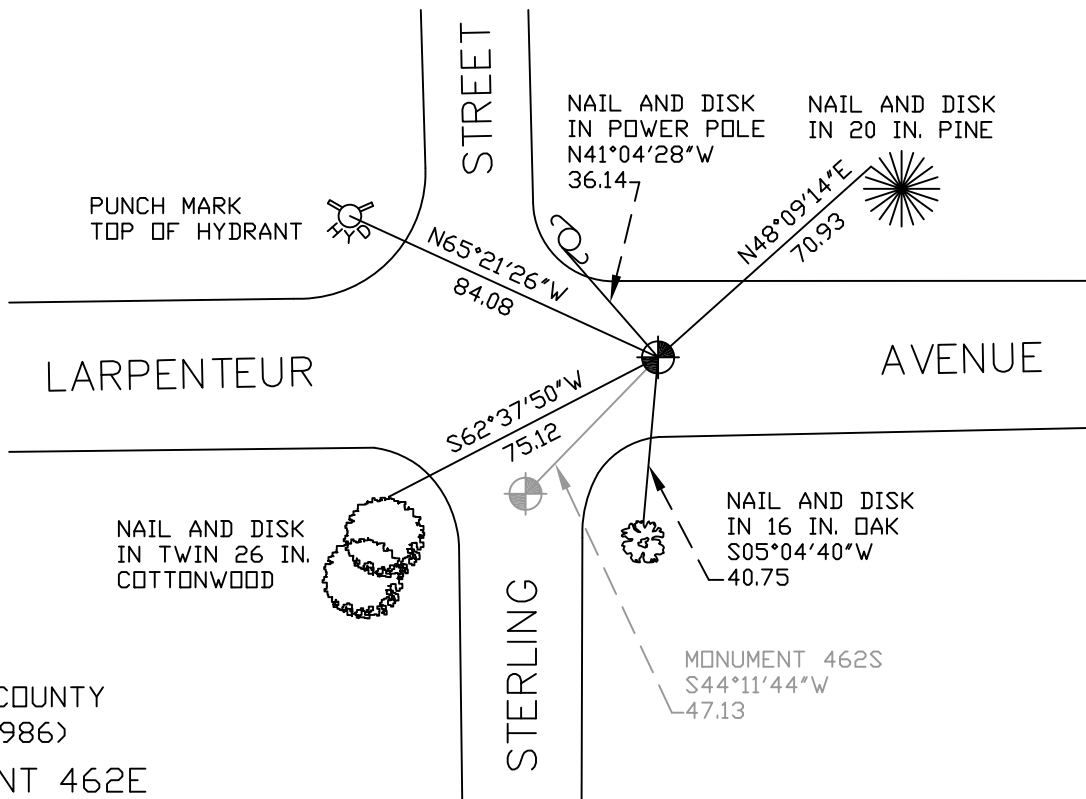
At the corner location shown on the sketch

On August 27, 2007 found a cast iron monument, down 0.1 foot.

left monument as found lowered monument removed monument (explain)

On _____ placed a _____

SKETCH OF REFERENCE TIES



RAMSEY COUNTY
NAD83 (1986)
MONUMENT 462E

X= 600536.582 (Easting)
Y= 173536.142 (Northing)

ALL DISTANCES ARE SHOWN IN U.S. SURVEY FEET.
BEARINGS ARE FOR TIE REFERENCE PURPOSES ONLY.

Statements of evidence relative to this corner are on the following page(s).

I hereby certify that this document and the data contained herein was prepared by me or under my direct supervision this _____ day of _____, 20____.

SIGNATURE

Minnesota License No. _____

- County Surveyor
 Deputy County Surveyor Land Surveyor

OFFICE OF COUNTY SURVEYOR
County of Ramsey

I hereby certify that this document was filed in the County Surveyor's office on the ____ day of _____, 20____.

David D. Claypool, P.L.S., County Surveyor

By _____, Deputy

MONUMENT 462E

Found a manhole at corner location. Traversed Sections 13 and 24 and set a cast iron monument 33 ft. east on line. No date given in field book.

Retied monument, July 16, 1984.

Monument removed for road milling project, 1990.

Set a 20 in. cast iron monument, October 13, 1992.

Retied monument, November 7, 2002.

Retied monument, August 27, 2007.