

# MONUMENT 449

## CERTIFICATE OF LOCATION OF GOVERNMENT CORNER

Southeast Corner of Section 14, Township 29 North, Range 23 West, County of Ramsey, State of Minnesota.

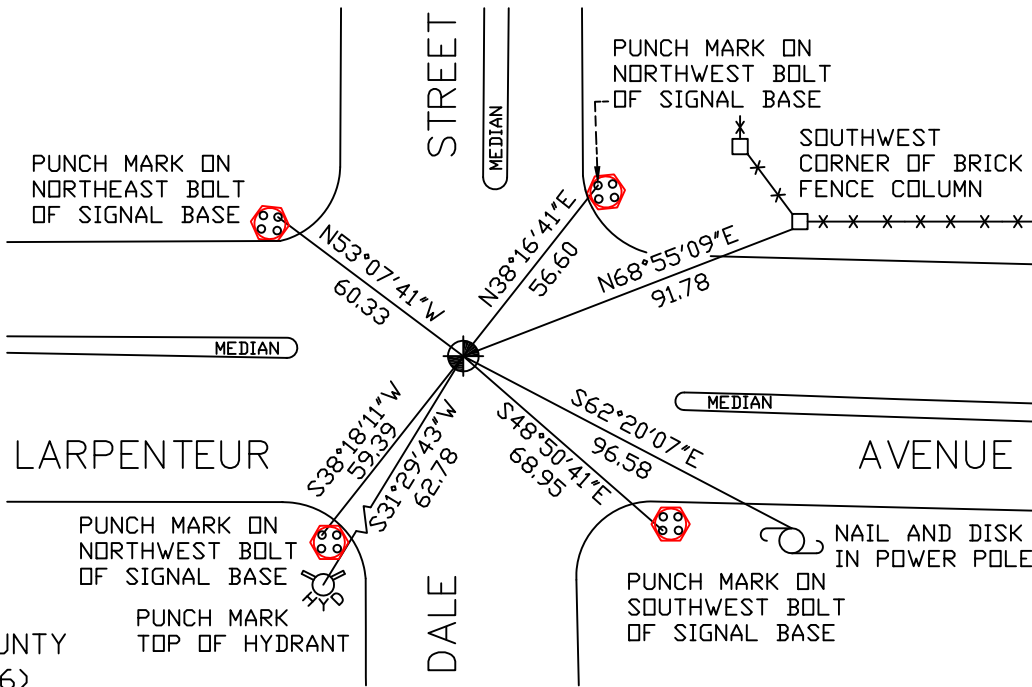
At the corner location shown on the sketch

On August 9, 2007 found a cast iron monument, flush.

left monument as found     lowered monument     removed monument (explain)

On \_\_\_\_\_ placed a \_\_\_\_\_

## SKETCH OF REFERENCE TIES



RAMSEY COUNTY  
NAD83 (1986)

MONUMENT 449

X= 566554.259 (Easting)  
Y= 173277.366 (Northing)

ALL DISTANCES ARE SHOWN IN U.S. SURVEY FEET.  
BEARINGS ARE FOR TIE REFERENCE PURPOSES ONLY.

Statements of evidence relative to this corner are on the following page(s).

I hereby certify that this document and the data contained herein was prepared by me or under my direct supervision this \_\_\_\_\_ day of \_\_\_\_\_, 20\_\_\_\_.

SIGNATURE

Minnesota License No. \_\_\_\_\_

- County Surveyor  
 Deputy County Surveyor     Land Surveyor

OFFICE OF COUNTY SURVEYOR

County of Ramsey

I hereby certify that this document was filed in the County Surveyor's office on the \_\_\_\_ day of \_\_\_\_\_, 20\_\_\_\_.

David D. Claypool, P.L.S., County Surveyor

By \_\_\_\_\_, Deputy

## MONUMENT 449

Found a brass plug. See "Survey Book No. 3" to prove brass plug is not correct, March, 1976.

Set a cast iron cap monument in correct location, June 17, 1977.

Checked monument, August 12, 1977.

Monument destroyed by St. Paul Water Dept., 1980.

Replaced with a 20 in. cast iron monument, July, 1981.  
See "Survey Book No. 3", page 43.

Checked monument, July 20, 1981.

Checked monument, March 26, 1984.

Retied monument, August 30, 1990.

Retied monument, July 12, 2002.

Retied monument, August 9, 2007.