

MONUMENT 447

CERTIFICATE OF LOCATION OF GOVERNMENT CORNER

Southeast Corner of Section 15, Township 29 North, Range 23 West, County of Ramsey, State of Minnesota.

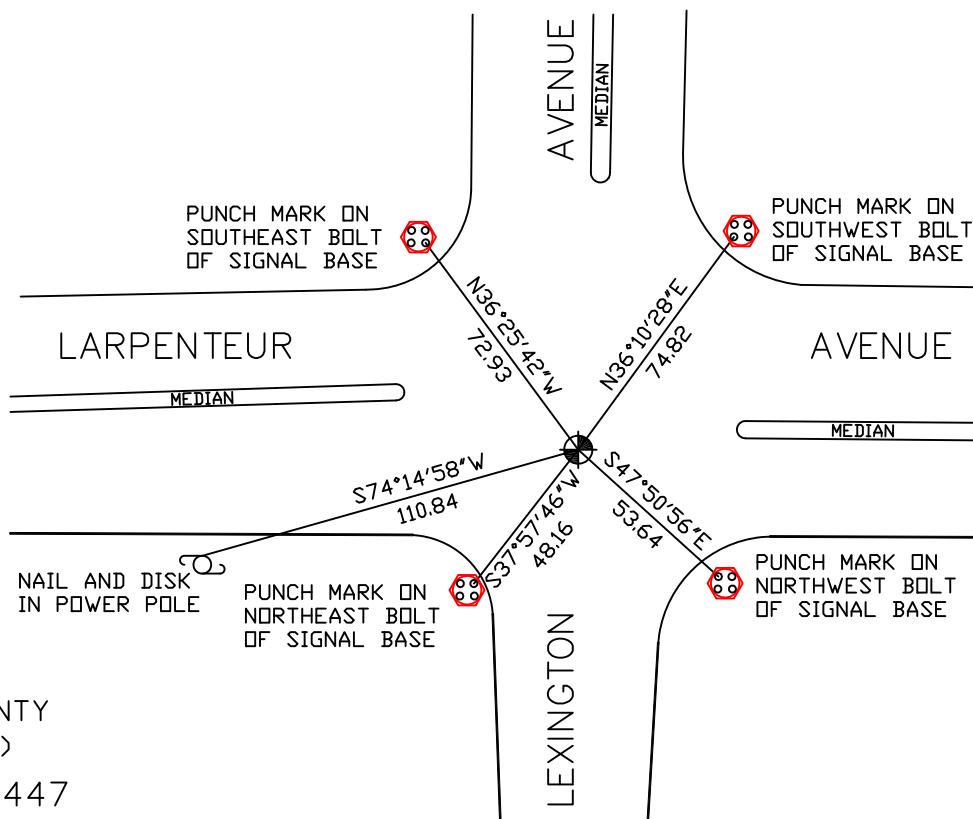
At the corner location shown on the sketch

On September 5, 2007 found a cast iron monument within a cast iron manhole assembly.

left monument as found lowered monument removed monument (explain)

On _____ placed a _____

SKETCH OF REFERENCE TIES



RAMSEY COUNTY
NAD83 (1986)
MONUMENT 447

X= 561285.080 (Easting)
Y= 173327.465 (Northing)

ALL DISTANCES ARE SHOWN IN U.S. SURVEY FEET.
BEARINGS ARE FOR TIE REFERENCE PURPOSES ONLY.

Statements of evidence relative to this corner are on the following page(s).

I hereby certify that this document and the data contained herein was prepared by me or under my direct supervision this _____ day of _____, 20____.

SIGNATURE

Minnesota License No. _____

- County Surveyor
 Deputy County Surveyor Land Surveyor

OFFICE OF COUNTY SURVEYOR
County of Ramsey

I hereby certify that this document was filed in the County Surveyor's office on the ____ day of _____, 20____.

David D. Claypool, P.L.S., County Surveyor

By _____, Deputy

MONUMENT 447

Re-established location by surveys from the City of St. Paul, 1979.

Placed a short (4 5/8 in.) cast iron monument, August 17, 1981.

Removed cast iron monument for construction, April 28, 2000.

Reset 20 in. cast iron monument; Shafer Contracting to set 12 in. P.V.C. pipe and cast iron manhole assembly, August 15, 2000.

Retied monument, down +/- 15 in., March 28, 2001.

Retied monument, September 5, 2007.