

MONUMENT 445

CERTIFICATE OF LOCATION OF GOVERNMENT CORNER

Southeast Corner of Section 16, Township 29 North, Range 23 West, County of Ramsey, State of Minnesota.

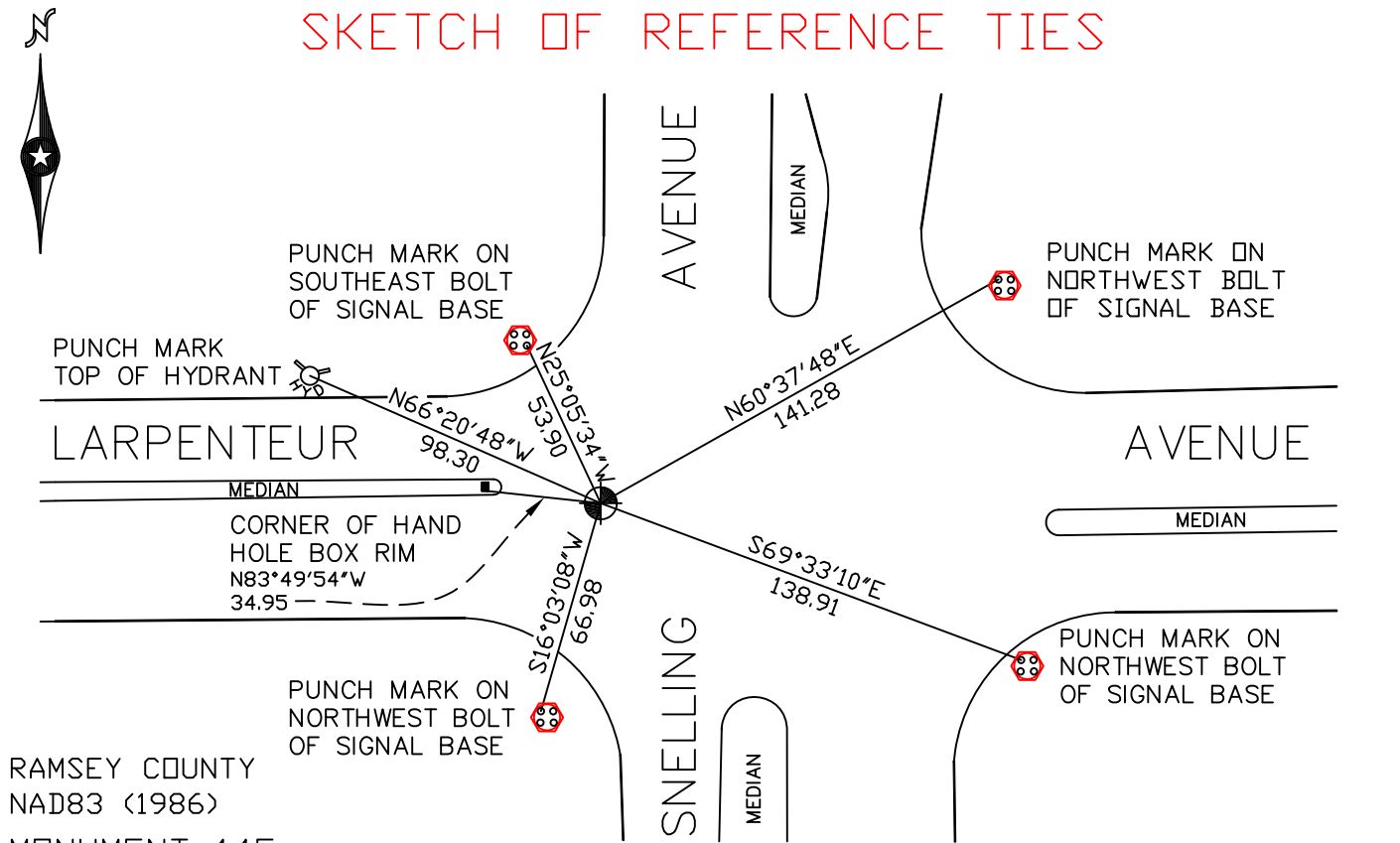
At the corner location shown on the sketch

On September 5, 2007 found a cast iron monument, flush.

left monument as found lowered monument removed monument (explain)

On _____ placed a _____

SKETCH OF REFERENCE TIES



RAMSEY COUNTY
NAD83 (1986)
MONUMENT 445

X= 556012.641 (Easting)
Y= 173235.702 (Northing)

ALL DISTANCES ARE SHOWN IN U.S. SURVEY FEET.
BEARINGS ARE FOR TIE REFERENCE PURPOSES ONLY.

Statements of evidence relative to this corner are on the following page(s).

I hereby certify that this document and the data contained herein was prepared by me or under my direct supervision this _____ day of _____, 20____.

SIGNATURE

Minnesota License No. _____

- County Surveyor
 Deputy County Surveyor Land Surveyor

OFFICE OF COUNTY SURVEYOR

County of Ramsey

I hereby certify that this document was filed in the County Surveyor's office on the ____ day of _____, 20____.

David D. Claypool, P.L.S., County Surveyor

By _____, Deputy

MONUMENT 445

Found a P.K. nail, June 18, 1976.

Found a granite monument down 0.35 ft. and set a cast iron cap monument, June 21, 1977.

Checked monument, August 12, 1977.

Monument removed by State construction, 1986.

Relocated position and drilled hole and four tie holes, 1987.

Set a cast iron cap and bolt monument, July, 1994.

Retied monument, August 2, 1994.

Retied monument, March 28, 2001.

Retied monument, September 5, 2007.