

MONUMENT 443

CERTIFICATE OF LOCATION OF GOVERNMENT CORNER

Southeast Corner of Section 17, Township 29 North, Range 23 West, County of Ramsey, State of Minnesota.

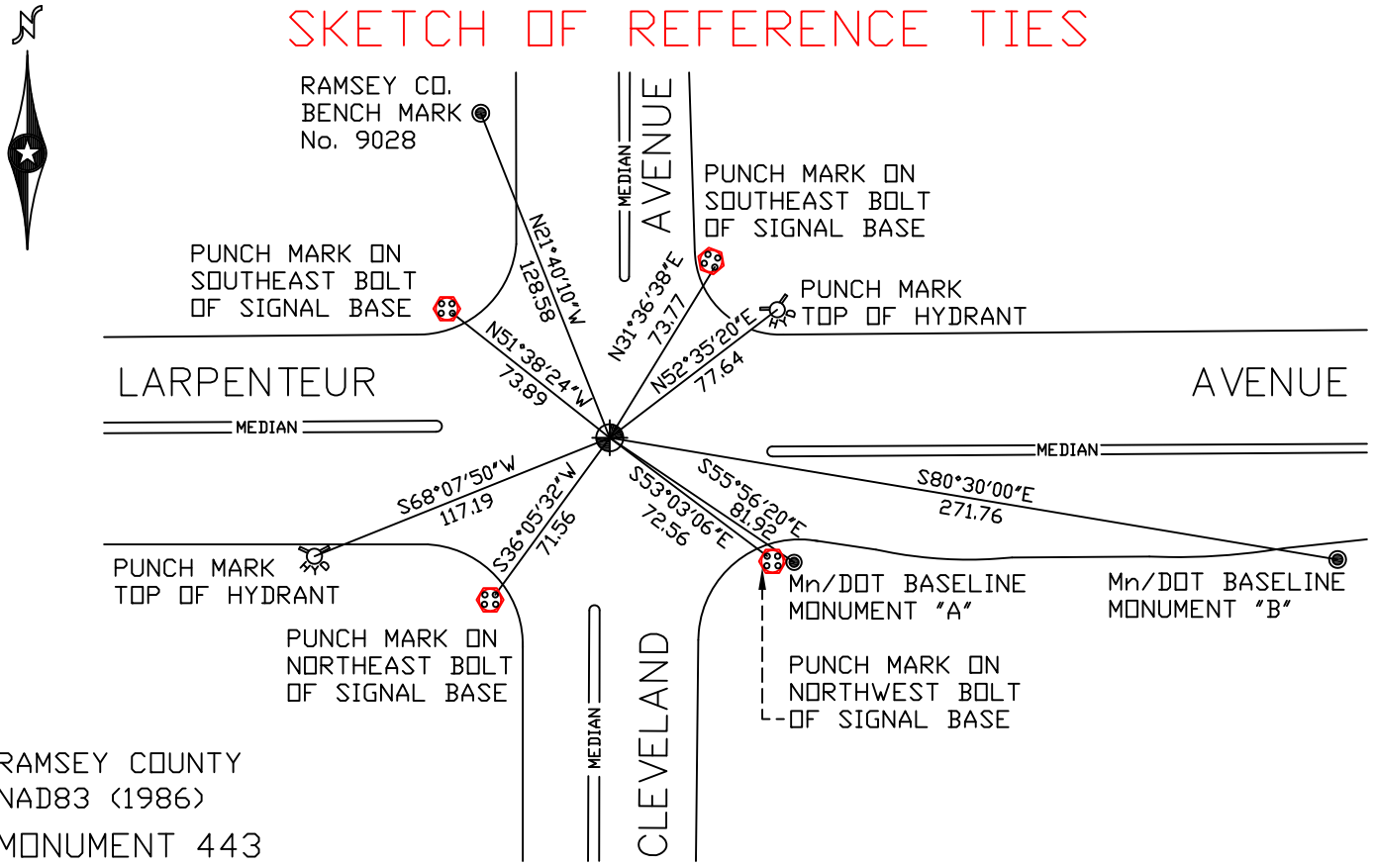
At the corner location shown on the sketch

On September 5, 2007 found a cast iron monument within a cast iron manhole assembly.

left monument as found lowered monument removed monument (explain)

On _____ placed a _____

SKETCH OF REFERENCE TIES



ALL DISTANCES ARE SHOWN IN U.S. SURVEY FEET.
BEARINGS ARE FOR TIE REFERENCE PURPOSES ONLY.

Statements of evidence relative to this corner are on the following page(s).

I hereby certify that this document and the data contained herein was prepared by me or under my direct supervision this _____ day of _____, 20____.

SIGNATURE

Minnesota License No. _____

- County Surveyor
 Deputy County Surveyor Land Surveyor

OFFICE OF COUNTY SURVEYOR

County of Ramsey

I hereby certify that this document was filed in the County Surveyor's office on the ____ day of _____, 20____.

David D. Claypool, P.L.S., County Surveyor

By _____, Deputy

MONUMENT 443

Found iron flush, June 22, 1976.

Construction Department destroyed monument, April, 1997.

Set a 20 in. cast iron monument +/- 14 in. below finish grade; contractor to set 12 in. P.V.C. pipe and cast iron manhole assembly over monument, July 30, 1997.

Retied monument, March 23, 2001.

Retied monument, September 5, 2007.