

# MONUMENT 433

## CERTIFICATE OF LOCATION OF GOVERNMENT CORNER

Center of Section 16, Township 29 North, Range 22 West, County of Ramsey,  
State of Minnesota.

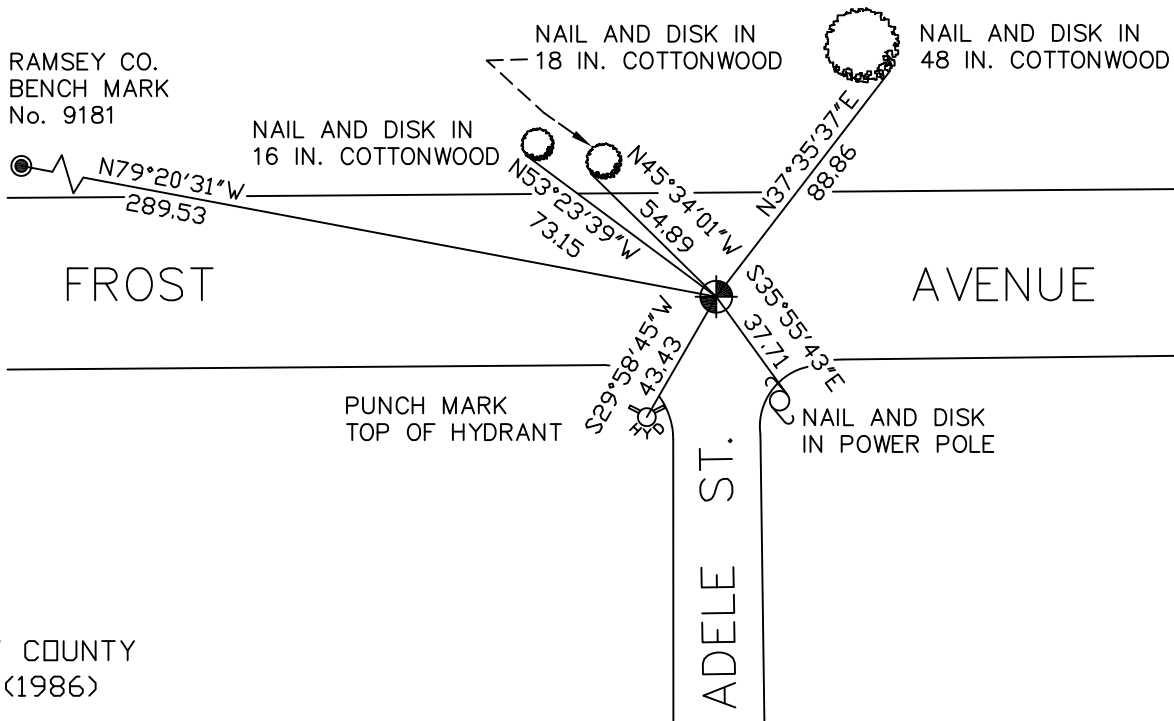
At the corner location shown on the sketch

On August 29, 2007 found a cast iron monument within a cast iron manhole assembly.

left monument as found     lowered monument     removed monument (explain)

On \_\_\_\_\_ placed a \_\_\_\_\_

## SKETCH OF REFERENCE TIES



RAMSEY COUNTY  
NAD83 (1986)  
MONUMENT 433

X= 584700.184 (Easting)  
Y= 176052.862 (Northing)

ALL DISTANCES ARE SHOWN IN U.S. SURVEY FEET.  
BEARINGS ARE FOR TIE REFERENCE PURPOSES ONLY.

Statements of evidence relative to this corner are on the following page(s).

I hereby certify that this document and the data contained herein was prepared by me or under my direct supervision this \_\_\_\_\_ day of \_\_\_\_\_, 20\_\_\_\_.

SIGNATURE

Minnesota License No. \_\_\_\_\_

- County Surveyor  
 Deputy County Surveyor     Land Surveyor

OFFICE OF COUNTY SURVEYOR  
County of Ramsey

I hereby certify that this document was filed in the County Surveyor's office on the \_\_\_\_ day of \_\_\_\_\_, 20\_\_\_\_.

David D. Claypool, P.L.S., County Surveyor

By \_\_\_\_\_, Deputy

## MONUMENT 433

Found a 4 in. by 4 1/2 in. steel plate in concrete down 0.2 ft. and retied, September 4, 1974.

Set a cast iron cap monument over steel plate, June 1, 1976.

Monument destroyed by street construction, 1980-81.

Set position to replace monument, May, 1982.

Set a 20 in. cast iron monument, 1982.

Lowered monument 15 in. for Construction Department; contractor to set 12 in. P.V.C. pipe and cast iron manhole assembly over monument, October 2, 1997.

Retied monument, November 6, 2002.

Retied monument, August 29, 2007.