

# MONUMENT 431

## CERTIFICATE OF LOCATION OF GOVERNMENT CORNER

Center of Section 17, Township 29 North, Range 22 West, County of Ramsey,  
State of Minnesota.

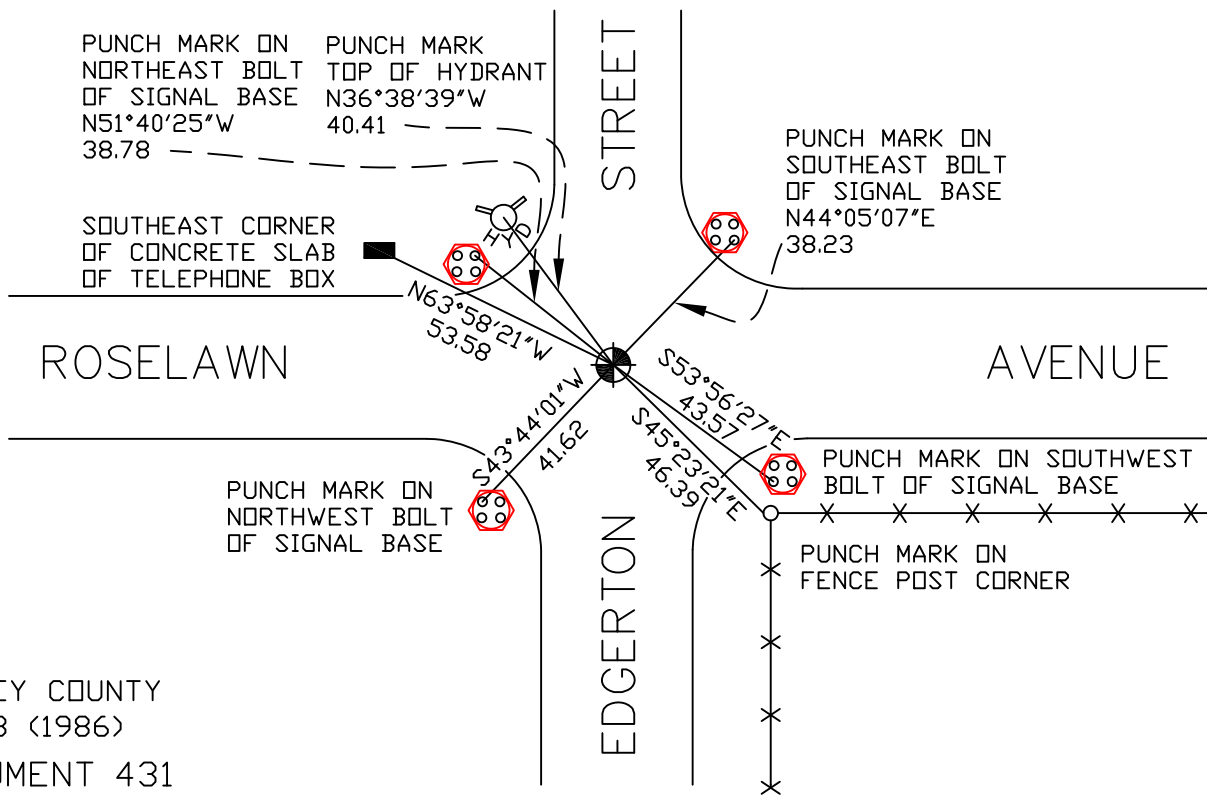
At the corner location shown on the sketch

On August 22, 2007 found a cast iron monument, flush.

left monument as found     lowered monument     removed monument (explain)

On \_\_\_\_\_ placed a \_\_\_\_\_

### SKETCH OF REFERENCE TIES



RAMSEY COUNTY  
NAD83 (1986)  
MONUMENT 431

X= 579435.578 (Easting)  
Y= 175992.195 (Northing)

ALL DISTANCES ARE SHOWN IN U.S. SURVEY FEET.  
BEARINGS ARE FOR TIE REFERENCE PURPOSES ONLY.

Statements of evidence relative to this corner are on the following page(s).

I hereby certify that this document and the data contained herein was prepared by me or under my direct supervision this \_\_\_\_\_ day of \_\_\_\_\_, 20\_\_\_\_.

\_\_\_\_\_  
SIGNATURE

Minnesota License No. \_\_\_\_\_  
 County Surveyor  
 Deputy County Surveyor     Land Surveyor

OFFICE OF COUNTY SURVEYOR  
County of Ramsey

I hereby certify that this document was filed in the County Surveyor's office on the \_\_\_\_ day of \_\_\_\_\_, 20\_\_\_\_.

David D. Claypool, P.L.S., County Surveyor

By \_\_\_\_\_, Deputy

## MONUMENT 431

Found 1/4 in. diameter, 5 in. long brass rod; placed P.K. nails and dug down 3 1/2 ft. and found nothing, September 3, 1974.

Used old ties and placed a 20 in. cast iron monument, flush; road has approximately 2 in. of bituminous over concrete road; retied monument, September 20, 1974.

Removed 20 in. cast iron monument, June 15, 1990.

Placed a 20 in. cast iron monument, October 26, 1990.

Cemented top of monument, October 19, 1993.

Retied monument, July 8, 2002.

Retied monument, August 22, 2007.