

MONUMENT 424

CERTIFICATE OF LOCATION OF GOVERNMENT CORNER

East Quarter Corner of Section 15, Township 29 North, Range 23 West, County of Ramsey, State of Minnesota.

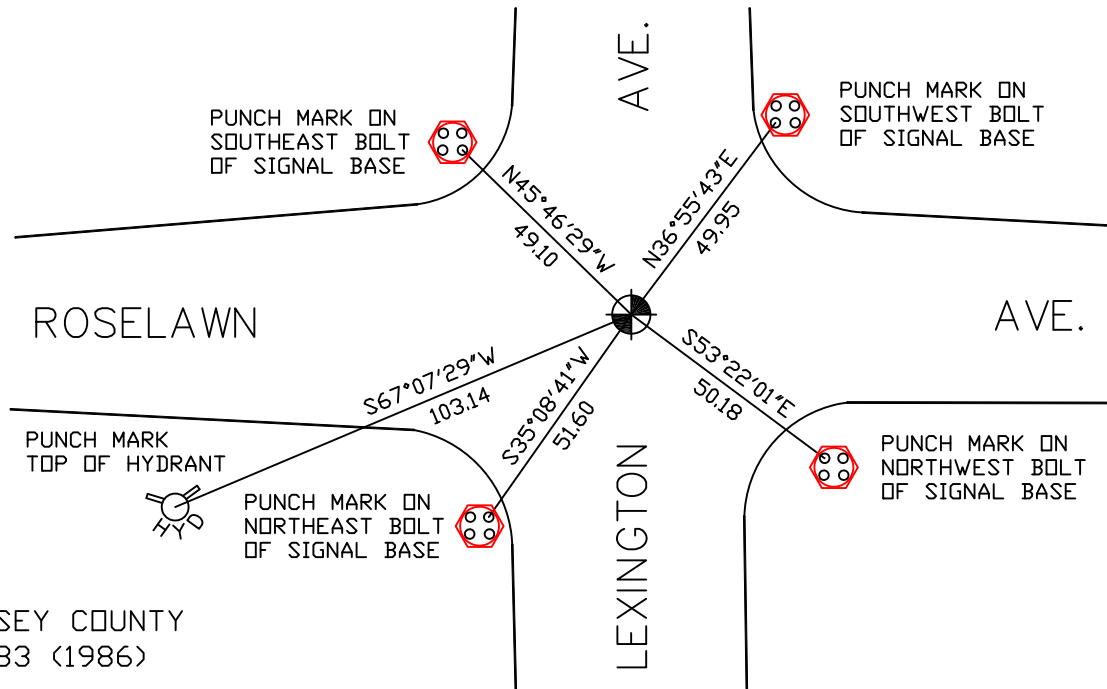
At the corner location shown on the sketch

On August 7, 2007 found a cast iron monument within a cast iron manhole assembly.

left monument as found lowered monument removed monument (explain)

On _____ placed a _____

SKETCH OF REFERENCE TIES



RAMSEY COUNTY
NAD83 (1986)
MONUMENT 424

X= 561298.564 (Easting)
Y= 175967.705 (Northing)

ALL DISTANCES ARE SHOWN IN U.S. SURVEY FEET.
BEARINGS ARE FOR TIE REFERENCE PURPOSES ONLY.

Statements of evidence relative to this corner are on the following page(s).

I hereby certify that this document and the data contained herein was prepared by me or under my direct supervision this _____ day of _____, 20____.

SIGNATURE

Minnesota License No. _____

- County Surveyor
 Deputy County Surveyor Land Surveyor

OFFICE OF COUNTY SURVEYOR
County of Ramsey

I hereby certify that this document was filed in the County Surveyor's office on the ____ day of _____, 20____.

David D. Claypool, P.L.S., County Surveyor

By _____, Deputy

MONUMENT 424

Found a P.K. nail (see Book 1, page 23) in 1974. Checks with ties.

Placed a cast iron monument, May 15, 1975.

Retied monument, July 28, 1975.

Checked monument, July 29, 1977.

Monument destroyed by construction, 1979.

Placed a cast iron monument, April 17, 1981.

Replaced monument with a 20 in. cast iron monument, no date given in field book.

Retied monument, flush, March 4, 1993.

Tied monument and set a 20 in. cast iron monument 1.5 ft. below grade, April 20 and May 1, 1998.

Set a cast iron manhole assembly over cast iron monument, July 27, 1998.

Retied monument, July 19, 2002.

Retied monument, August 7, 2007.