

# MONUMENT 423

## CERTIFICATE OF LOCATION OF GOVERNMENT CORNER

Center of Section 15, Township 29 North, Range 23 West, County of Ramsey,  
State of Minnesota.

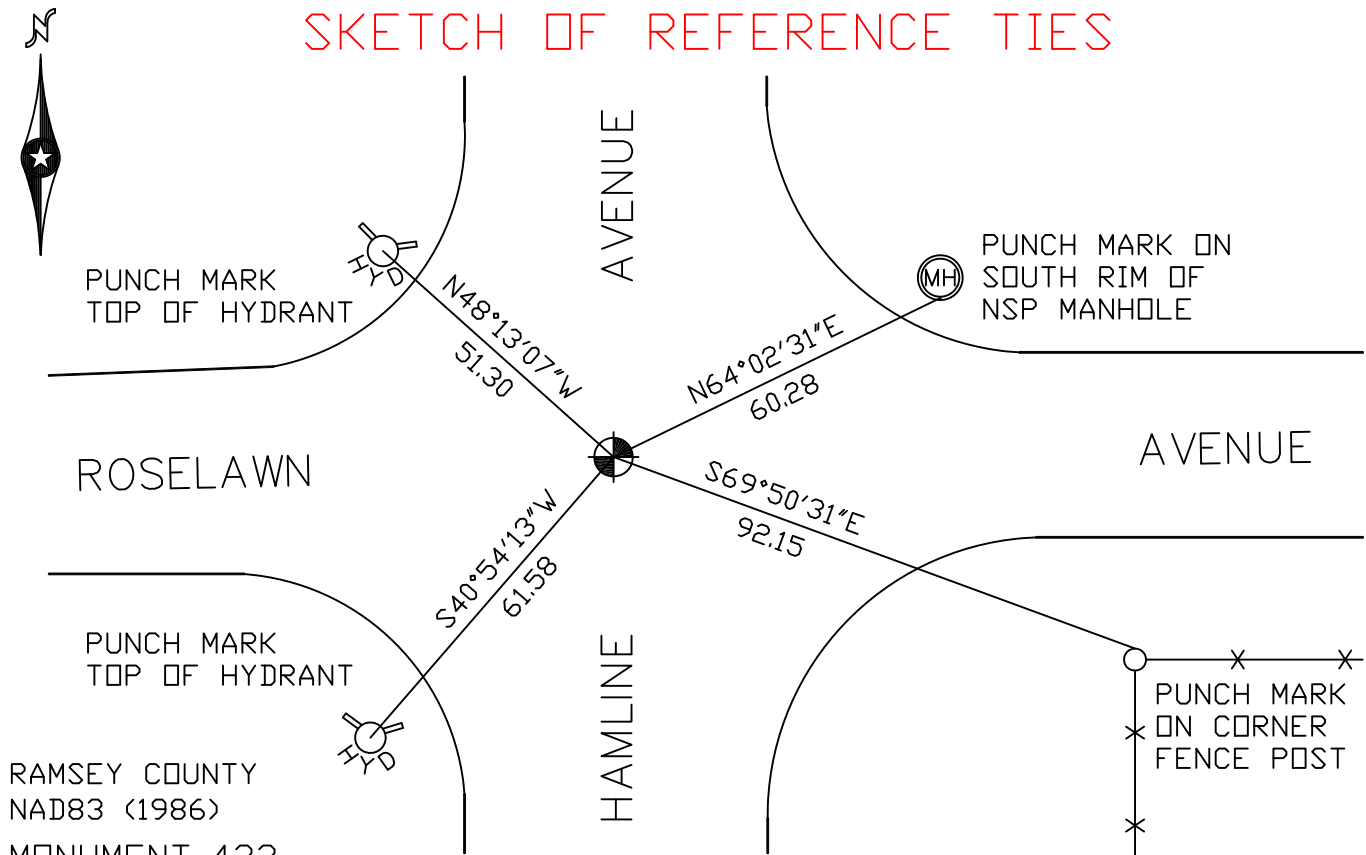
At the corner location shown on the sketch

On August 7, 2007 found a cast iron monument, flush.

left monument as found     lowered monument     removed monument (explain)

On \_\_\_\_\_ placed a \_\_\_\_\_

### SKETCH OF REFERENCE TIES



RAMSEY COUNTY  
NAD83 (1986)  
MONUMENT 423

X= 558661.311 (Easting)  
Y= 175915.696 (Northing)

ALL DISTANCES ARE SHOWN IN U.S. SURVEY FEET.  
BEARINGS ARE FOR TIE REFERENCE PURPOSES ONLY.

Statements of evidence relative to this corner are on the following page(s).

I hereby certify that this document and the data contained herein was prepared by me or under my direct supervision this \_\_\_\_\_ day of \_\_\_\_\_, 20\_\_\_\_.

SIGNATURE

Minnesota License No. \_\_\_\_\_

- County Surveyor  
 Deputy County Surveyor     Land Surveyor

OFFICE OF COUNTY SURVEYOR  
County of Ramsey

I hereby certify that this document was filed in the County Surveyor's office on the \_\_\_\_ day of \_\_\_\_\_, 20\_\_\_\_.

David D. Claypool, P.L.S., County Surveyor

By \_\_\_\_\_, Deputy

## MONUMENT 423

Found a 3/4 in. diameter, 1 ft.-10 in. long, solid iron, down 0.1 ft.; dug down 2 ft. and found a granite monument lying completely on its side; replaced solid iron with a cast iron monument, August 20, 1974.

Checked cast iron monument and adjusted it to existing irons, August 22, 1974.

Retied monument, January 27, 1975.

Monument checked, July 29, 1977.

Monument removed and replaced for Roselawn Avenue road maintenance, 1988.

Tied out monument for removal during reconstruction of Hamline Avenue, April 24, 1990.

Placed P.K. nails and checked location; tied out location, June 23, 1992.

Set a 20 in. cast iron monument, October 14, 1992.

Retied monument, July 19, 2002.

Retied monument, August 7, 2007.