

MONUMENT 405

CERTIFICATE OF LOCATION OF GOVERNMENT CORNER

Southeast Corner of Section 12, Township 29 North, Range 23 West, County of Ramsey, State of Minnesota.

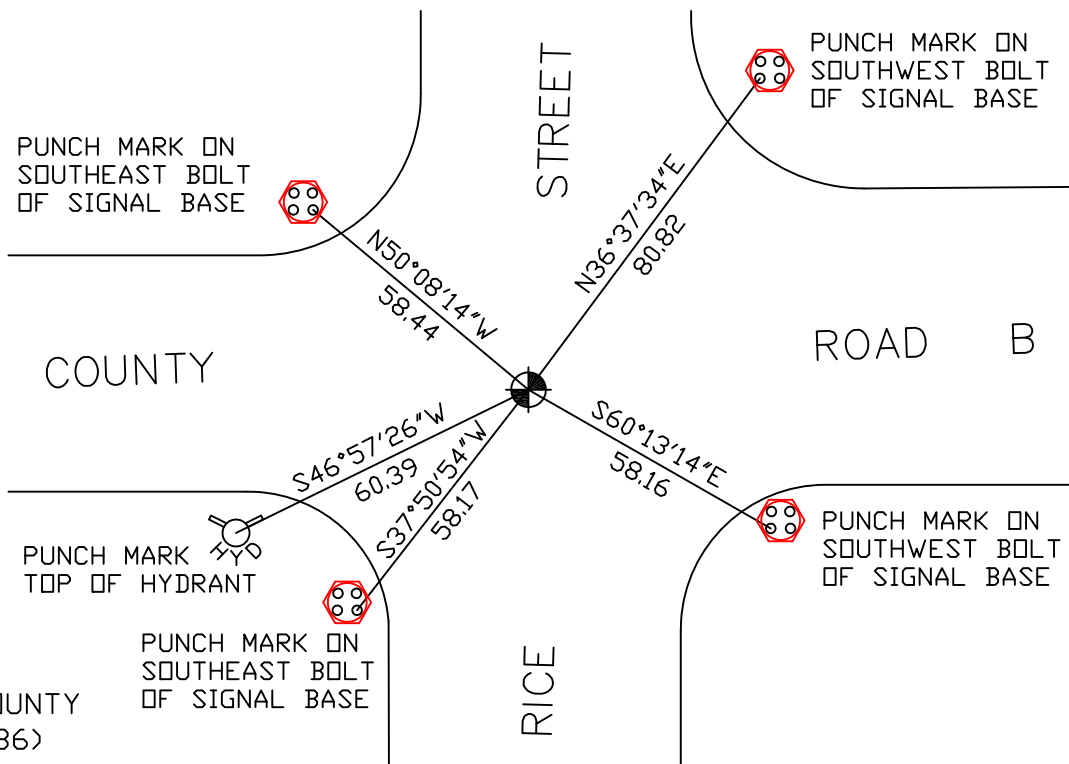
At the corner location shown on the sketch

On August 8, 2007 found a cast iron monument, flush.

left monument as found lowered monument removed monument (explain)

On _____ placed a _____

SKETCH OF REFERENCE TIES



RAMSEY COUNTY
NAD83 (1986)

MONUMENT 405

X= 571744.768 (Easting)
Y= 178581.236 (Northing)

ALL DISTANCES ARE SHOWN IN U.S. SURVEY FEET.
BEARINGS ARE FOR TIE REFERENCE PURPOSES ONLY.

Statements of evidence relative to this corner are on the following page(s).

I hereby certify that this document and the data contained herein was prepared by me or under my direct supervision this _____ day of _____, 20____.

SIGNATURE

Minnesota License No. _____

- County Surveyor
 Deputy County Surveyor Land Surveyor

OFFICE OF COUNTY SURVEYOR

County of Ramsey

I hereby certify that this document was filed in the County Surveyor's office on the ____ day of _____, 20____.

David D. Claypool, P.L.S., County Surveyor

By _____, Deputy

MONUMENT 405

Found a brass plug; dug down 3 ft. and found nothing; set a cast iron monument, July 9, 1976.

Checked monument, July 29, 1977.

Retied monument, June 7, 1990.

After construction by Mn/DOT, found monument with top missing; set P.K. nail, September 29, 1992.

Placed a short (4 5/8 in.) cast iron monument in concrete over broken cast iron monument, April 27, 1993.

Retied monument, July 19, 2002.

Retied monument, August 8, 2007.