

# MONUMENT 404

## CERTIFICATE OF LOCATION OF GOVERNMENT CORNER

South Quarter Corner of Section 12, Township 29 North, Range 23 West, County of Ramsey, State of Minnesota.

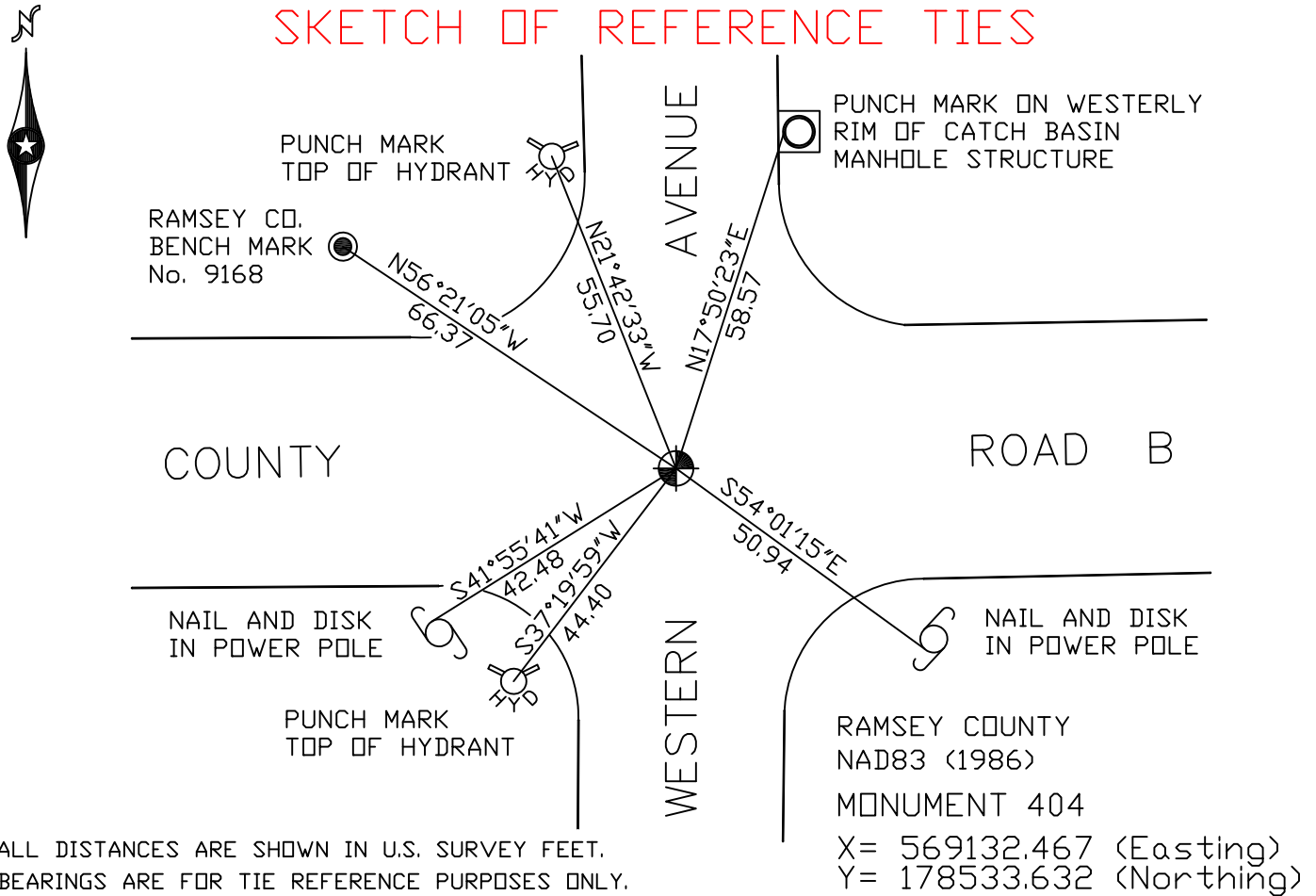
At the corner location shown on the sketch

On August 8, 2007 found a cast iron monument, flush.

left monument as found     lowered monument     removed monument (explain)

On \_\_\_\_\_ placed a \_\_\_\_\_

### SKETCH OF REFERENCE TIES



ALL DISTANCES ARE SHOWN IN U.S. SURVEY FEET.  
BEARINGS ARE FOR TIE REFERENCE PURPOSES ONLY.

X = 569132.467 (Easting)  
Y = 178533.632 (Northing)

Statements of evidence relative to this corner are on the following page(s).

I hereby certify that this document and the data contained herein was prepared by me or under my direct supervision this \_\_\_\_\_ day of \_\_\_\_\_, 20\_\_\_\_.

SIGNATURE

Minnesota License No. \_\_\_\_\_

- County Surveyor  
 Deputy County Surveyor     Land Surveyor

#### OFFICE OF COUNTY SURVEYOR

County of Ramsey

I hereby certify that this document was filed in the County Surveyor's office on the \_\_\_\_ day of \_\_\_\_\_, 20\_\_\_\_.

David D. Claypool, P.L.S., County Surveyor

By \_\_\_\_\_, Deputy

## MONUMENT 404

Found a 4 in. long bolt over a granite monument, down 4 1/4 in., March 13, 1975.

Set a short (4 1/2 in.) cast iron monument, June 30, 1975.

Retied monument, February 19, 1976.

Checked monument, July 29, 1977.

Tied out and removed monument for County road construction, July, 1991.

Set a 20 in. cast iron monument, October 13, 1992.

Retied monument, July 19, 2002.

Retied monument, August 8, 2007.