

MONUMENT 3SC

CERTIFICATE OF LOCATION OF GOVERNMENT CORNER

Northeast Corner of Section 6, Township 30 North, Range 23 West, County of Ramsey, State of Minnesota.

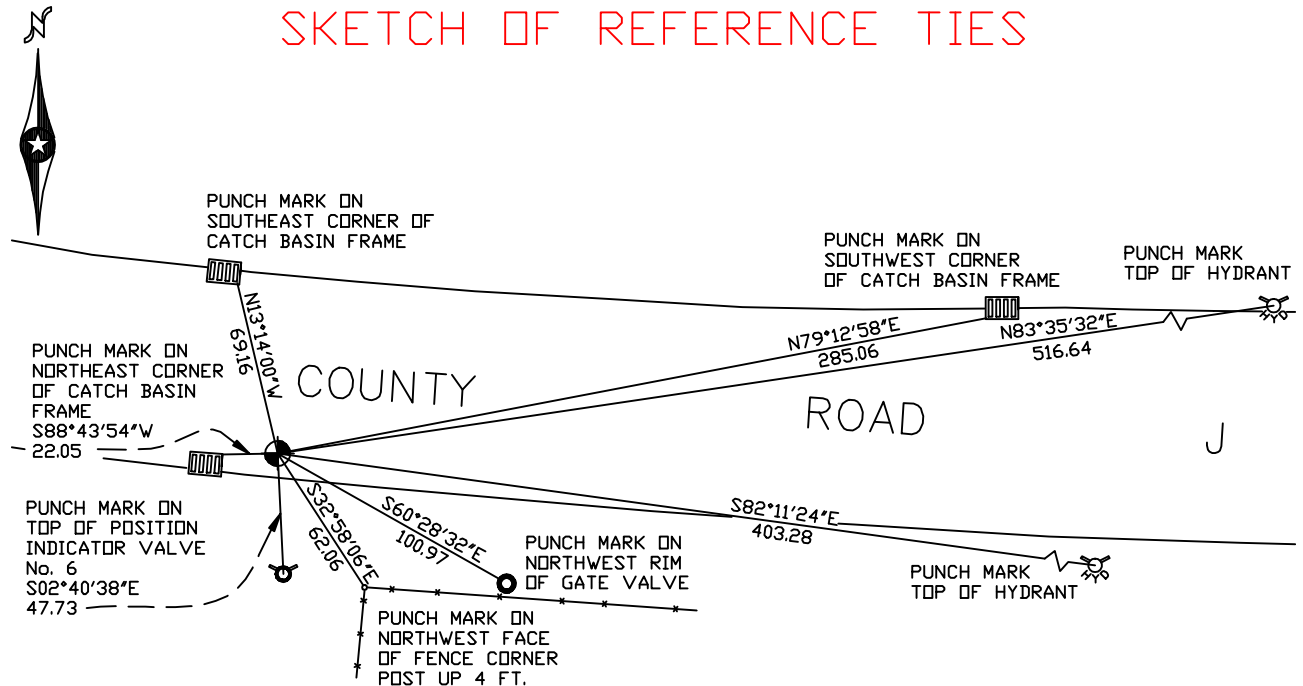
At the corner location shown on the sketch

On June 29, 2007 found a cast iron monument within a cast iron manhole assembly.

left monument as found lowered monument removed monument (explain)

On _____ placed a _____

SKETCH OF REFERENCE TIES



RAMSEY COUNTY
NAD83 (1986)

MONUMENT 3SC

X= 544940.610 (Easting)
Y= 221584.875 (Northing)

ALL DISTANCES ARE SHOWN IN U.S. SURVEY FEET.
BEARINGS ARE FOR TIE REFERENCE PURPOSES ONLY.

Statements of evidence relative to this corner are on the following page(s).

I hereby certify that this document and the data contained herein was prepared by me or under my direct supervision this _____ day of _____, 20____.

SIGNATURE

Minnesota License No. _____

County Surveyor Land Surveyor

OFFICE OF COUNTY SURVEYOR

County of Ramsey

I hereby certify that this document was filed in the County Surveyor's office on the ____ day of _____, 20____.

David D. Claypool, P.L.S., County Surveyor

By _____, Deputy

MONUMENT 3SC

Found a granite monument flush and retied, August 23, 1974.

Monument to be removed by construction, 1991.

Placed a spike in position, August 3, 1994.

Set a 20 in. cast iron monument, August 10, 1994.

Set a sign and post 5 ft. south, October 18, 1994.

Removed 20 in. cast iron monument and set a 20 in. cast iron monument marked "3rd Corr. Line" 0.1 ft. north of closing corner, July 28, 1995.

Tied 3SC monument, December 14, 1998.

Retied monument, June, 2004.

Tied out monument for removal during reconstruction of County Road J, June 6, 2006.

Reset a 20 in. cast iron monument within a cast iron manhole assembly, April 24, 2007.

Tied out monument, June 29, 2007.