

# MONUMENT 384

## CERTIFICATE OF LOCATION OF GOVERNMENT CORNER

East Quarter Corner of Section 7, Township 29 North, Range 22 West, County of Ramsey, State of Minnesota.

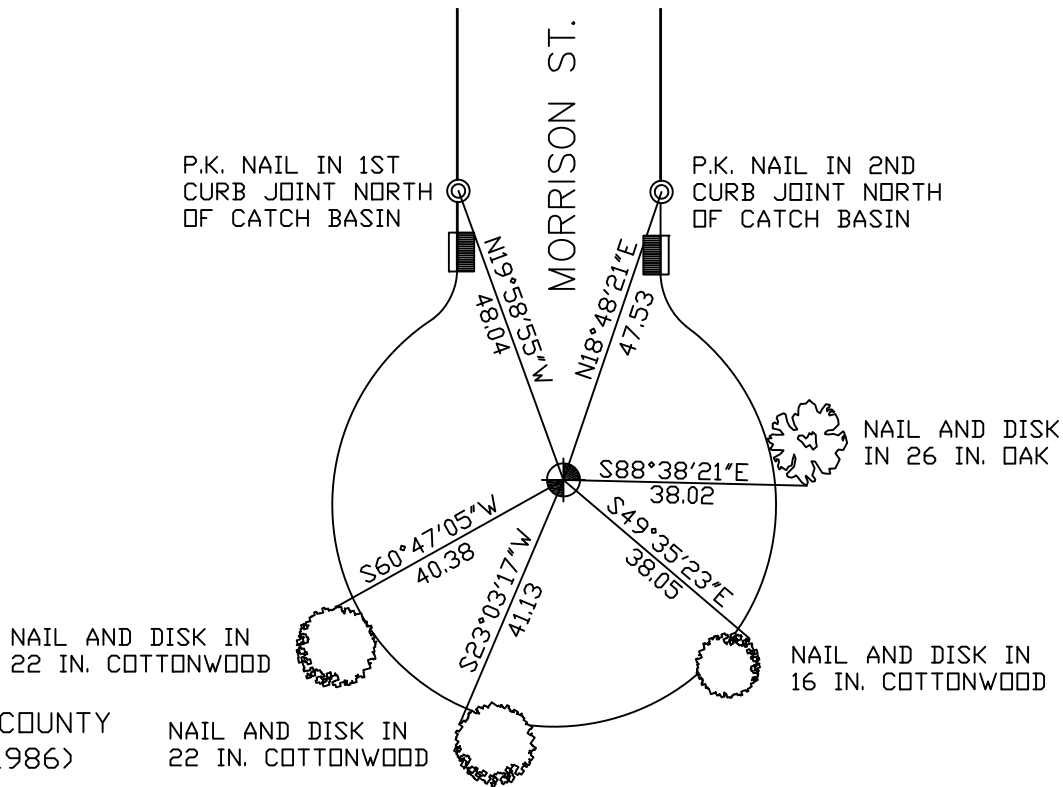
At the corner location shown on the sketch

On August 7, 2007 found a cast iron monument, flush.

left monument as found     lowered monument     removed monument (explain)

On \_\_\_\_\_ placed a \_\_\_\_\_

### SKETCH OF REFERENCE TIES



RAMSEY COUNTY  
NAD83 (1986)

NAIL AND DISK IN  
22 IN. COTTONWOOD

MONUMENT 384

X= 576763.816 (Easting)  
Y= 181211.319 (Northing)

ALL DISTANCES ARE SHOWN IN U.S. SURVEY FEET.  
BEARINGS ARE FOR TIE REFERENCE PURPOSES ONLY.

Statements of evidence relative to this corner are on the following page(s).

I hereby certify that this document and the data contained herein was prepared by me or under my direct supervision this \_\_\_\_\_ day of \_\_\_\_\_, 20\_\_\_\_.

SIGNATURE

Minnesota License No. \_\_\_\_\_

- County Surveyor  
 Deputy County Surveyor     Land Surveyor

OFFICE OF COUNTY SURVEYOR

County of Ramsey

I hereby certify that this document was filed in the County Surveyor's office on the \_\_\_\_ day of \_\_\_\_\_, 20\_\_\_\_.

David D. Claypool, P.L.S., County Surveyor

By \_\_\_\_\_, Deputy

## MONUMENT 384

Found a granite monument down 0.9 ft., 1974.

Checked monument, September 12, 1977.

Monument removed during street construction, 1987.

Placed a cast iron monument and retied, May 3, 1989.

Checked monument, August 9, 1990.

Retied monument, flush, December 30, 2002.

Retied monument, August 7, 2007.