

MONUMENT 381

CERTIFICATE OF LOCATION OF GOVERNMENT CORNER

Center of Section 12, Township 29 North, Range 23 West, County of Ramsey,
State of Minnesota.

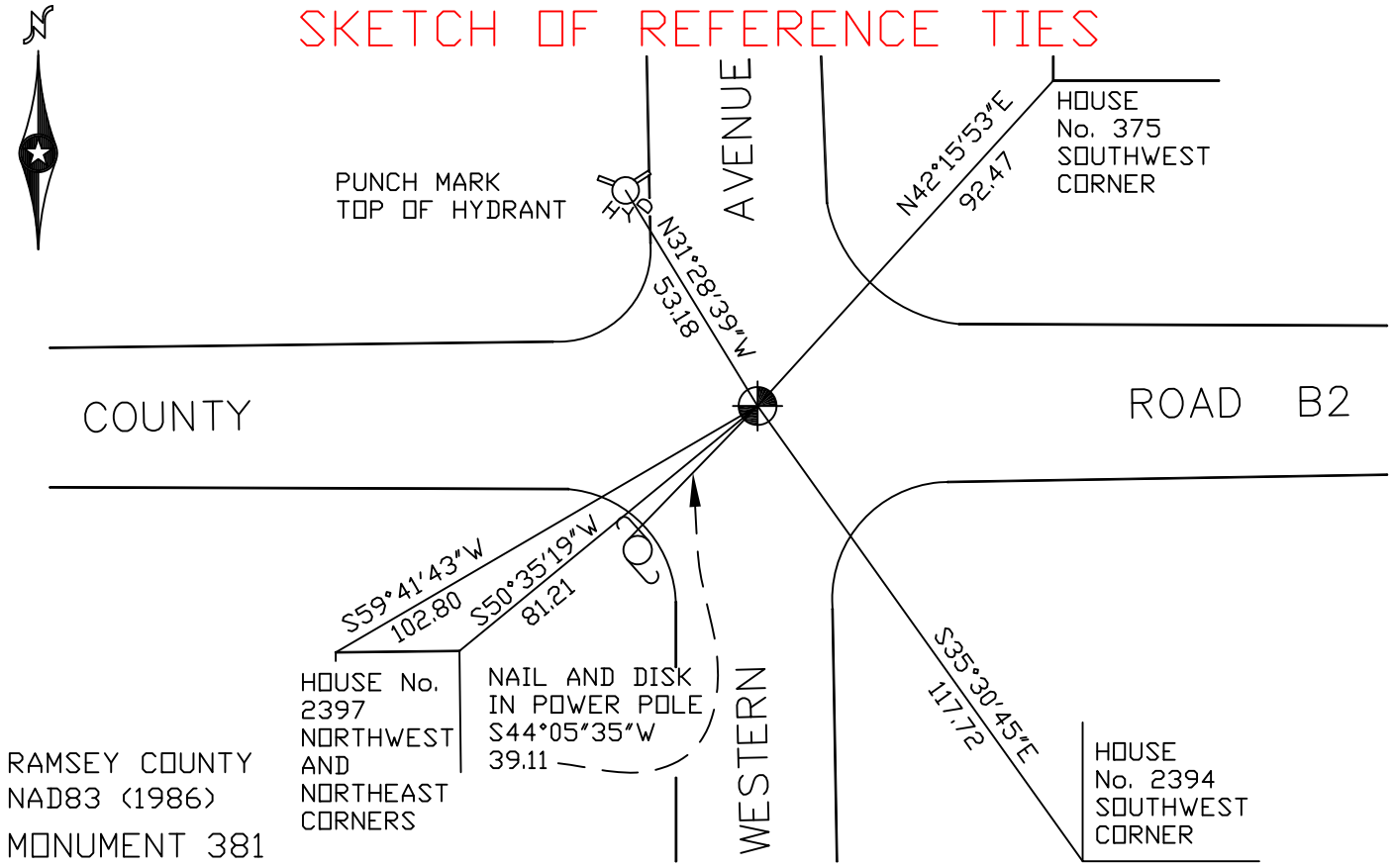
At the corner location shown on the sketch

On August 3, 2007 found a cast iron monument within a cast iron manhole
assembly.

left monument as found lowered monument removed monument (explain)

On _____ placed a _____

SKETCH OF REFERENCE TIES



RAMSEY COUNTY
NAD83 (1986)
MONUMENT 381

X= 569106.912 (Easting)
Y= 181177.937 (Northing)

ALL DISTANCES ARE SHOWN IN U.S. SURVEY FEET.
BEARINGS ARE FOR TIE REFERENCE PURPOSES ONLY.

Statements of evidence relative to this corner are on the following page(s).

I hereby certify that this document and the data contained herein was prepared by me or under my direct supervision this _____ day of _____, 20____.

SIGNATURE

Minnesota License No. _____

County Surveyor
 Deputy County Surveyor Land Surveyor

OFFICE OF COUNTY SURVEYOR
County of Ramsey

I hereby certify that this document was filed in the County Surveyor's office on the ____ day of _____, 20____.

David D. Claypool, P.L.S., County Surveyor

By _____, Deputy

MONUMENT 381

Found a cast iron monument flush and retied, July 31, 1974.

Tied out monument and removed, August 29, 1988.

Set a 20 in. cast iron monument, 1990.

Retied monument, July 18, 2002.

Tied out monument for removal during road resurfacing, May 30, 2007.

Set a 20 in. cast iron monument within a cast iron manhole assembly,
June 27, 2007.

Tied monument, August 3, 2007.