

# MONUMENT 379

## CERTIFICATE OF LOCATION OF GOVERNMENT CORNER

Center of Section 11, Township 29 North, Range 23 West, County of Ramsey,  
State of Minnesota.

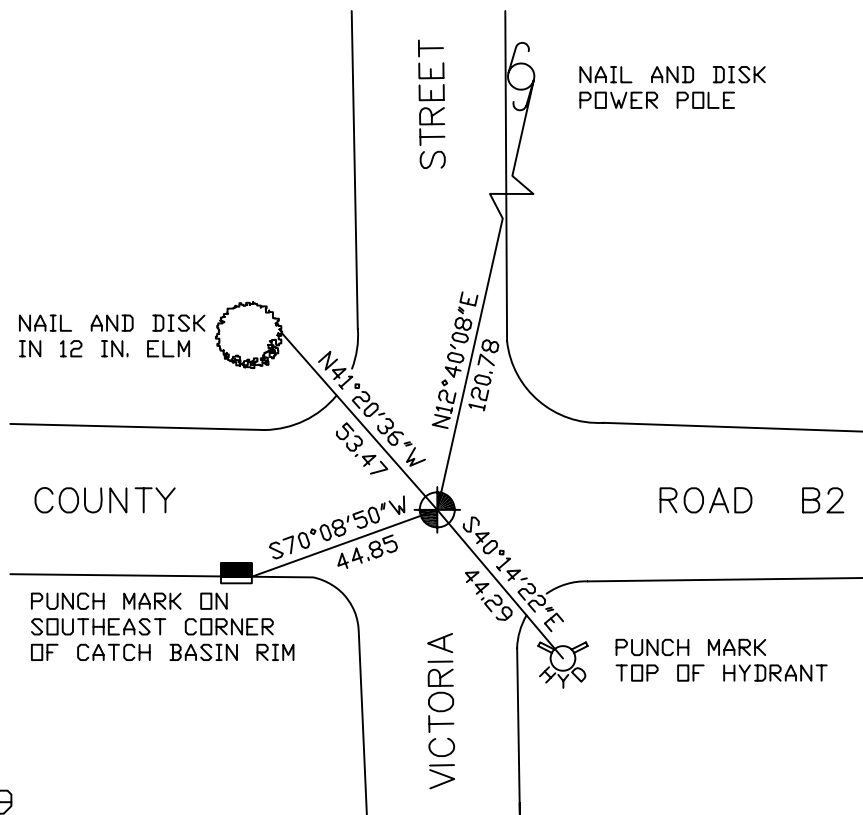
At the corner location shown on the sketch

On August 3, 2007 found a cast iron monument within a cast iron manhole  
assembly.

left monument as found     lowered monument     removed monument (explain)

On \_\_\_\_\_ placed a \_\_\_\_\_

### SKETCH OF REFERENCE TIES



RAMSEY COUNTY  
NAD83 (1986)  
MONUMENT 379

X= 563867.335 (Easting)  
Y= 181181.029 (Northing)

ALL DISTANCES ARE SHOWN IN U.S. SURVEY FEET.  
BEARINGS ARE FOR TIE REFERENCE PURPOSES ONLY.

Statements of evidence relative to this corner are on the following page(s).

I hereby certify that this document and the data contained herein was prepared by me or under my direct supervision this \_\_\_\_\_ day of \_\_\_\_\_, 20\_\_\_\_.

SIGNATURE

Minnesota License No. \_\_\_\_\_

- County Surveyor  
 Deputy County Surveyor     Land Surveyor

OFFICE OF COUNTY SURVEYOR  
County of Ramsey

I hereby certify that this document was filed in the County Surveyor's office on the \_\_\_\_ day of \_\_\_\_\_, 20\_\_\_\_.

David D. Claypool, P.L.S., County Surveyor

By \_\_\_\_\_, Deputy

## MONUMENT 379

Found a cast iron monument flush and retied, July 23, 1974.

Tied and removed cast iron monument, August 29, 1988.

Checked monument, August 10, 1990.

Retied monument, July 18, 2002.

Tied out monument for removal during road resurfacing, May 30, 2007.

Reset 20 in. cast iron monument within a cast iron manhole assembly,  
June 25, 2007.

Tied out monument, August 3, 2007.