

# MONUMENT 375

## CERTIFICATE OF LOCATION OF GOVERNMENT CORNER

Center of Section 9, Township 29 North, Range 23 West, County of Ramsey,  
State of Minnesota.

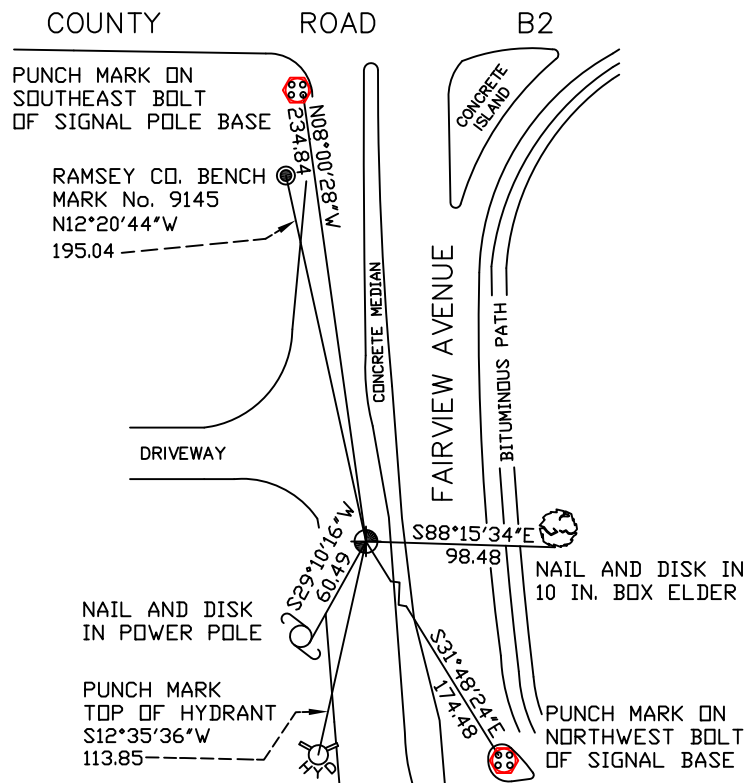
At the corner location shown on the sketch

On September 24, 2007 found a cast iron monument within a cast iron manhole  
assembly.

left monument as found     lowered monument     removed monument (explain)

On \_\_\_\_\_ placed a \_\_\_\_\_

## SKETCH OF REFERENCE TIES



RAMSEY COUNTY  
NAD83 (1986)  
MONUMENT 375

X= 553354.406 (Easting)  
Y= 181107.248 (Northing)

ALL DISTANCES ARE SHOWN IN U.S. SURVEY FEET.  
BEARINGS ARE FOR TIE REFERENCE PURPOSES ONLY.

Statements of evidence relative to this corner are on the following page(s).

I hereby certify that this document and the data contained herein was prepared by me or under my direct supervision this \_\_\_\_\_ day of \_\_\_\_\_, 20\_\_\_\_.

SIGNATURE

Minnesota License No. \_\_\_\_\_

- County Surveyor  
 Deputy County Surveyor     Land Surveyor

OFFICE OF COUNTY SURVEYOR  
County of Ramsey

I hereby certify that this document was filed in the County Surveyor's office on the \_\_\_\_ day of \_\_\_\_\_, 20\_\_\_\_.

David D. Claypool, P.L.S., County Surveyor

By \_\_\_\_\_, Deputy

## MONUMENT 375

Found a cast iron monument in place, 1974.

Checked monument, July 15, 1977.

Tied monument, August 13, 1990.

Found monument with top broken off, down 0.2 ft., June 21, 1999.

Checked ties and removed cast iron monument; set a 20 in. cast iron monument, down 18 in., within a cast iron manhole assembly; retied monument, July 12, 2001.

Cast iron manhole assembly removed for road milling project, July, 2004.

Retied monument, July 15, 2004.

Retied monument, September 24, 2007.