

MONUMENT 372

CERTIFICATE OF LOCATION OF GOVERNMENT CORNER

West Quarter Corner of Section 8, Township 29 North, Range 23 West, County of Ramsey, State of Minnesota.

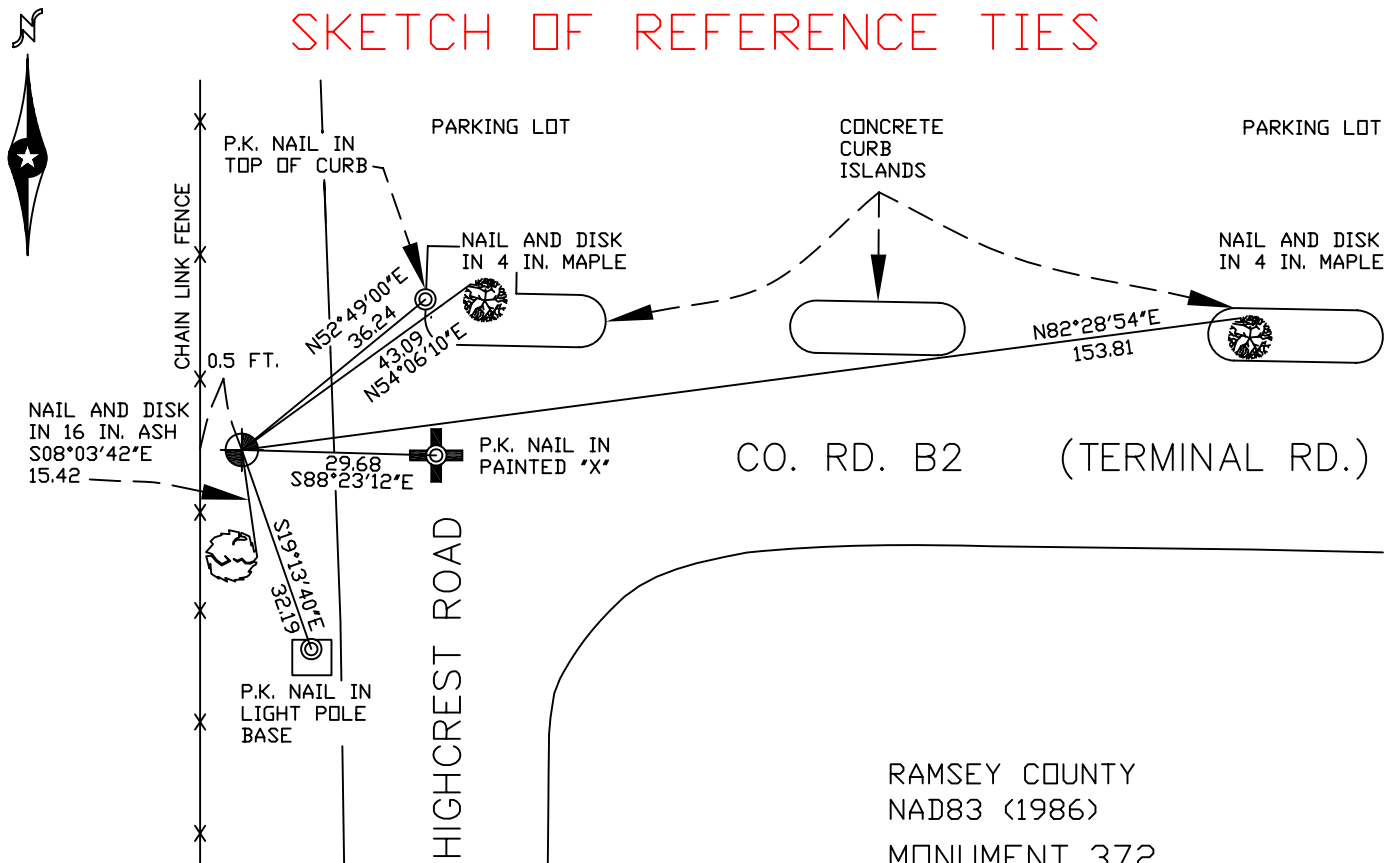
At the corner location shown on the sketch

On August 29, 2007 found a Hennepin County cast iron monument, down 1 foot.

left monument as found lowered monument removed monument (explain)

On _____ placed a _____

SKETCH OF REFERENCE TIES



ALL DISTANCES ARE SHOWN IN U.S. SURVEY FEET.
BEARINGS ARE FOR TIE REFERENCE PURPOSES ONLY.

RAMSEY COUNTY
NAD83 (1986)
MONUMENT 372

X = 545420.003 (Easting)
Y = 181081.333 (Northing)

Statements of evidence relative to this corner are on the following page(s).

I hereby certify that this document and the data contained herein was prepared by me or under my direct supervision this _____ day of _____, 20____.

SIGNATURE

Minnesota License No. _____

- County Surveyor
 Deputy County Surveyor Land Surveyor

OFFICE OF COUNTY SURVEYOR
County of Ramsey

I hereby certify that this document was filed in the County Surveyor's office on the ____ day of _____, 20____.

David D. Claypool, P.L.S., County Surveyor

By _____, Deputy

MONUMENT 372

Found a cast iron monument, 1974.

Retied monument, March 12, 1984.

Retied monument, August 13, 1990.

Placed sign and post +/- 1 ft. north of monument, July 6, 1992.

Found cast iron monument down +/- 1 ft. and retied, August 6, 2002.

Retied monument, August 29, 2007.