

MONUMENT 357

CERTIFICATE OF LOCATION OF GOVERNMENT CORNER

Northwest Corner of Section 12, Township 29 North, Range 23 West, County of Ramsey, State of Minnesota.

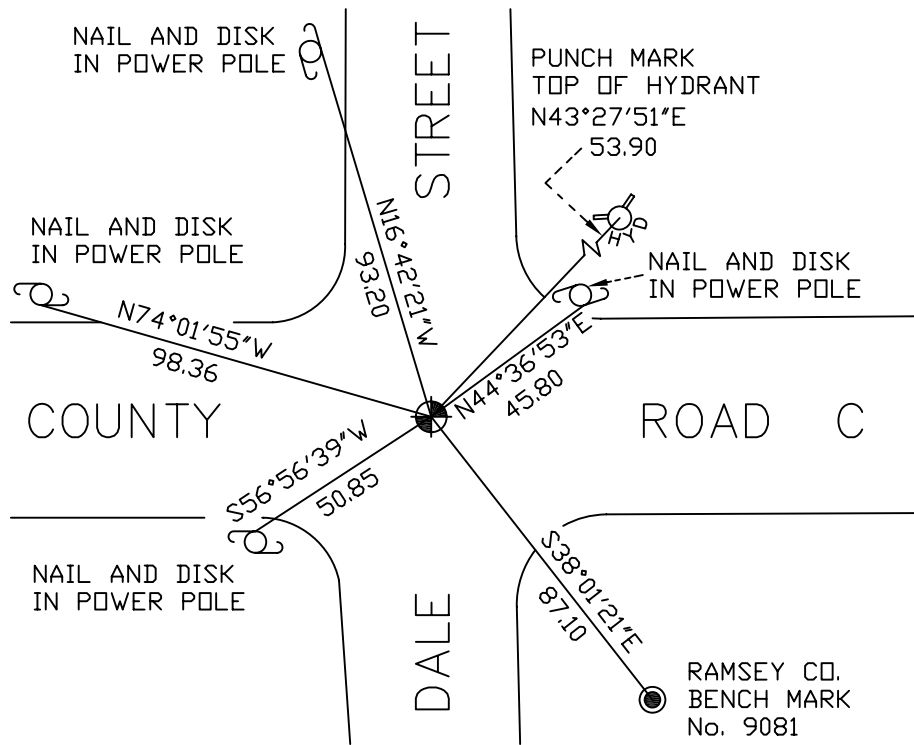
At the corner location shown on the sketch

On August 3, 2007 found a cast iron monument within a cast iron manhole assembly.

left monument as found lowered monument removed monument (explain)

On _____ placed a _____

SKETCH OF REFERENCE TIES



RAMSEY COUNTY
NAD83 (1986)

MONUMENT 357

X= 566470.262 (Easting)
Y= 183805.998 (Northing)

ALL DISTANCES ARE SHOWN IN U.S. SURVEY FEET.
BEARINGS ARE FOR TIE REFERENCE PURPOSES ONLY.

Statements of evidence relative to this corner are on the following page(s).

I hereby certify that this document and the data contained herein was prepared by me or under my direct supervision this _____ day of _____, 20____.

SIGNATURE

Minnesota License No. _____

- County Surveyor
 Deputy County Surveyor Land Surveyor

OFFICE OF COUNTY SURVEYOR
County of Ramsey

I hereby certify that this document was filed in the County Surveyor's office on the ____ day of _____, 20____.

David D. Claypool, P.L.S., County Surveyor

By _____, Deputy

MONUMENT 357

Found cast iron monument broken off and retied, July 31, 1974.

Replaced with a full cast iron monument, December 2, 1974.

Checked monument, July 14, 1977.

Retied monument, down +/- 0.1 ft., January 10, 1991.

Removed monument for road maintenance, June, 2000.

Reset cast iron monument, down 18 in., within a cast iron manhole assembly, September, 2000.

Retied monument, July 17, 2002.

Retied monument, August 3, 2007.