

MONUMENT 353

CERTIFICATE OF LOCATION OF GOVERNMENT CORNER

Northeast Corner of Section 9, Township 29 North, Range 23 West, County of Ramsey, State of Minnesota.

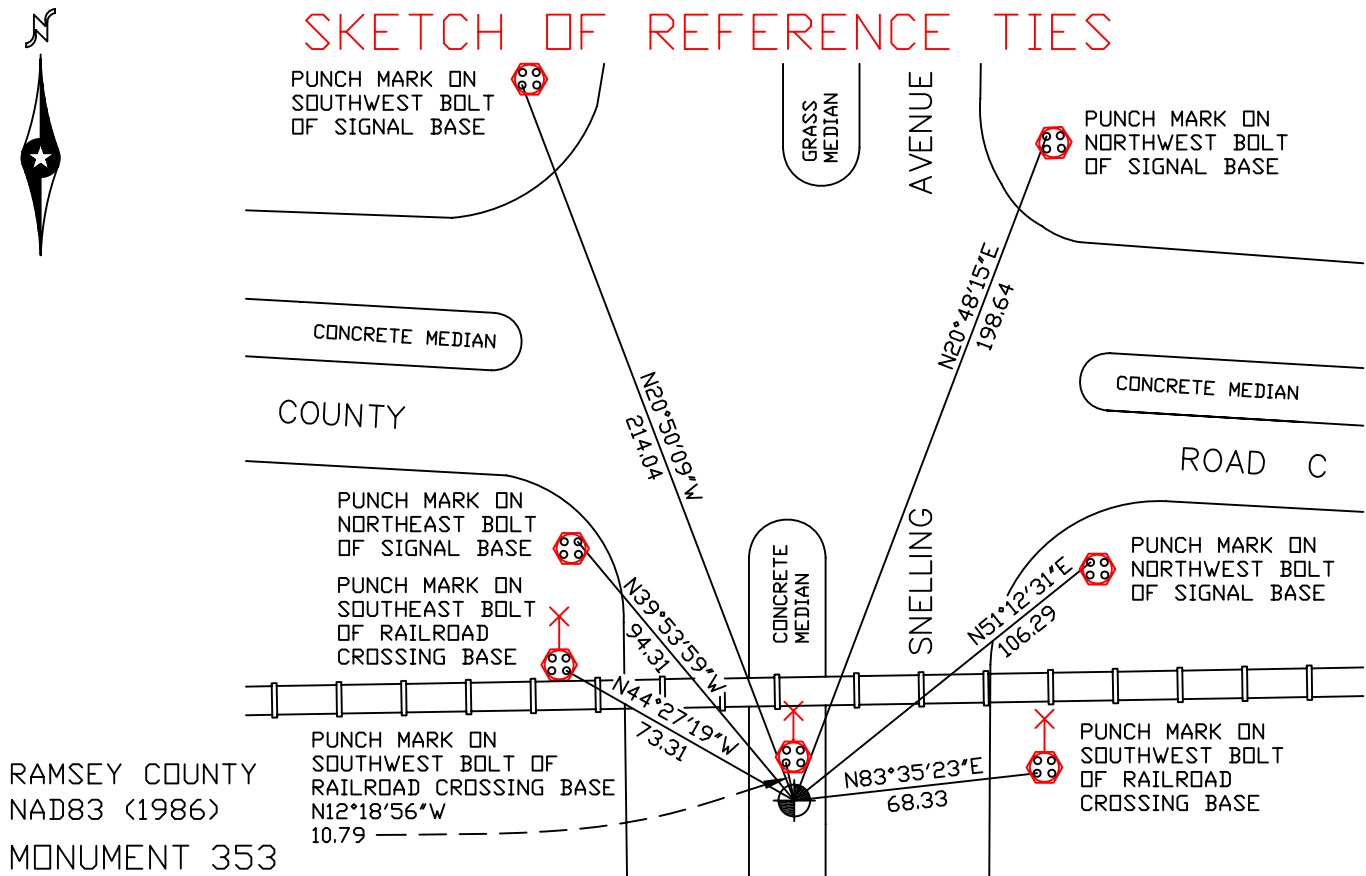
At the corner location shown on the sketch

On August 6, 2007 found a cast iron monument within a cast iron manhole assembly.

left monument as found lowered monument removed monument (explain)

On _____ placed a _____

SKETCH OF REFERENCE TIES



Statements of evidence relative to this corner are on the following page(s).

I hereby certify that this document and the data contained herein was prepared by me or under my direct supervision this _____ day of _____, 20____.

SIGNATURE

Minnesota License No. _____

- County Surveyor
 Deputy County Surveyor Land Surveyor

OFFICE OF COUNTY SURVEYOR
County of Ramsey

I hereby certify that this document was filed in the County Surveyor's office on the ____ day of _____, 20____.

David D. Claypool, P.L.S., County Surveyor

By _____, Deputy

MONUMENT 353

Found a cast iron monument, 1975.

Checked monument, July 15, 1977.

Cast iron monument down +/- 0.4 ft., January 10, 1991.

Retied monument, August 7, 2002.

Monument tied out prior to removal by construction activity, no date given in field book.

Set a cast iron monument, October, 2004.

Cast iron manhole assembly placed around monument, September 25, 2005.

Retied monument, August 6, 2007.