

MONUMENT 335

CERTIFICATE OF LOCATION OF GOVERNMENT CORNER

Center of Section 1, Township 29 North, Range 23 West, County of Ramsey,
State of Minnesota.

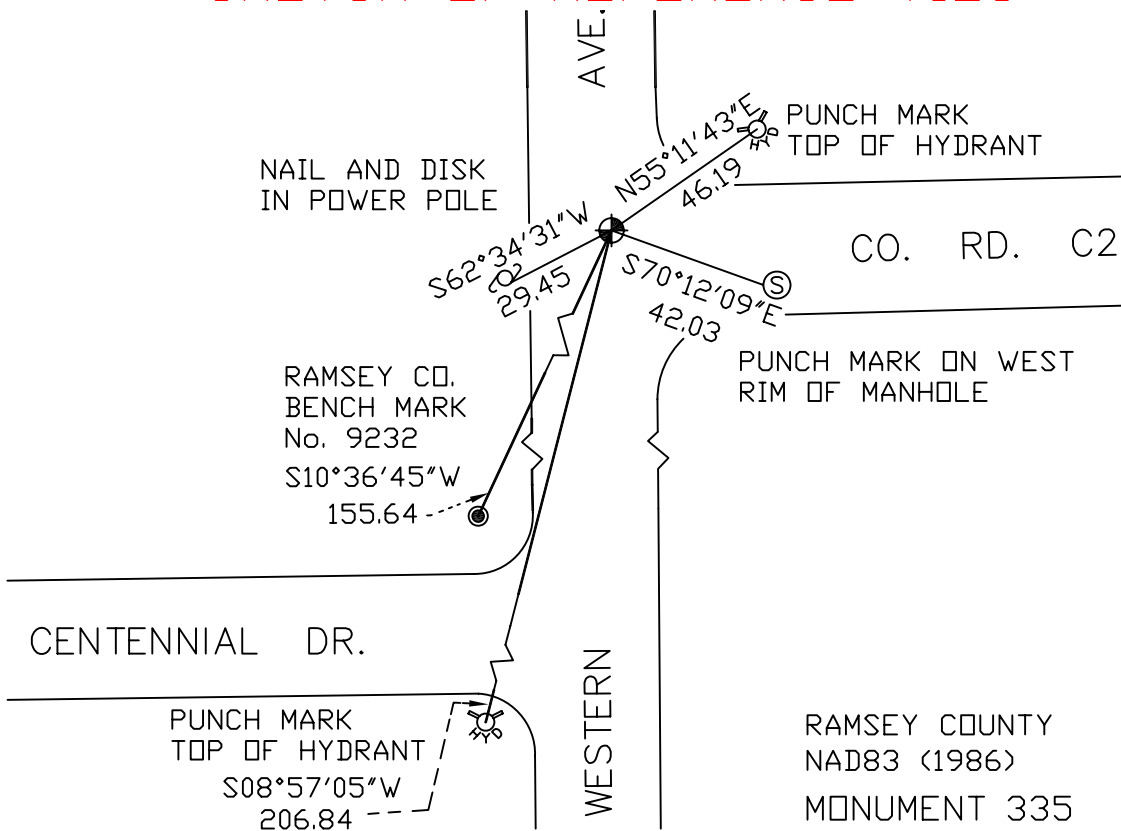
At the corner location shown on the sketch

On August 24, 2007 found a cast iron monument, down 0.2 feet.

left monument as found lowered monument removed monument (explain)

On _____ placed a _____

SKETCH OF REFERENCE TIES



ALL DISTANCES ARE SHOWN IN U.S. SURVEY FEET.
BEARINGS ARE FOR TIE REFERENCE PURPOSES ONLY.

RAMSEY COUNTY
NAD83 (1986)
MONUMENT 335
X= 569047.586 (Easting)
Y= 186434.315 (Northing)

Statements of evidence relative to this corner are on the following page(s).

I hereby certify that this document and the data contained herein was prepared by me or under my direct supervision this _____ day of _____, 20____.

SIGNATURE

Minnesota License No. _____

- County Surveyor
 Deputy County Surveyor Land Surveyor

OFFICE OF COUNTY SURVEYOR
County of Ramsey

I hereby certify that this document was filed in the County Surveyor's office on the ____ day of _____, 20____.

David D. Claypool, P.L.S., County Surveyor

By _____, Deputy

MONUMENT 335

Found 1/2 in. diameter iron over granite monument, down 0.7 ft., July 22, 1974.

Placed a short (4 5/8 in.) cast iron monument, July 8, 1975.

Retied monument, March 26, 1985.

Monument destroyed by City of Roseville reconstruction of Western Ave., 1987.

Reset monument position using traverse information. Dug hole to set monument and hit a granite monument down 19 in., May, 1991.

Reset 4 1/2 in. cast iron monument in concrete. Positioned monument +/- 0.03 ft. west to match granite monument location, June 4, 1991.

Retied monument, August 8, 2002.

Retied monument, August 24, 2007.