

# MONUMENT 332

## CERTIFICATE OF LOCATION OF GOVERNMENT CORNER

West Quarter Corner of Section 2, Township 29 North, Range 23 West, County of Ramsey, State of Minnesota.

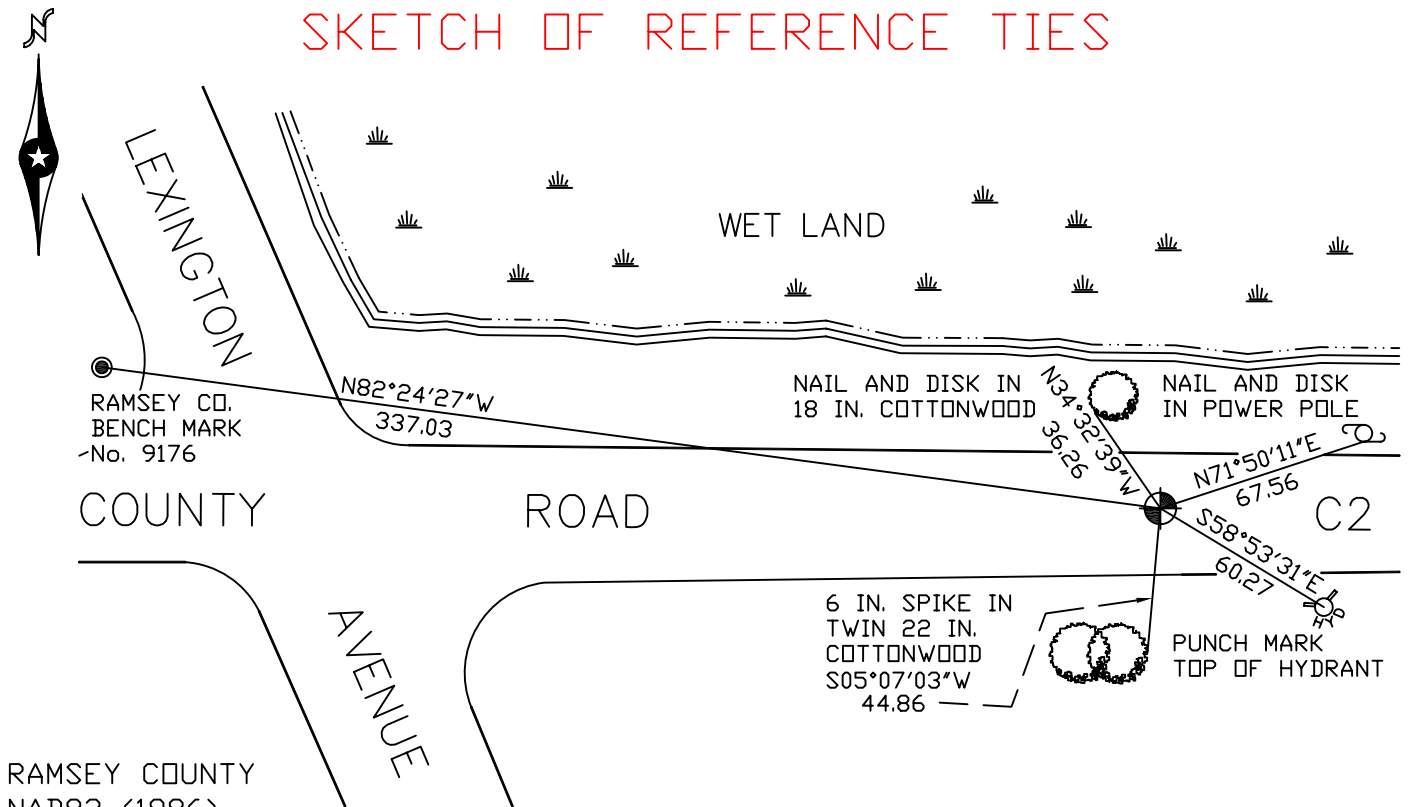
At the corner location shown on the sketch

On August 24, 2007 found a cast iron monument, flush.

left monument as found     lowered monument     removed monument (explain)

On \_\_\_\_\_ placed a \_\_\_\_\_

### SKETCH OF REFERENCE TIES



RAMSEY COUNTY  
NAD83 (1986)  
MONUMENT 332

X= 561163.565 (Easting)  
Y= 186434.570 (Northing)

ALL DISTANCES ARE SHOWN IN U.S. SURVEY FEET.  
BEARINGS ARE FOR TIE REFERENCE PURPOSES ONLY.

Statements of evidence relative to this corner are on the following page(s).

I hereby certify that this document and the data contained herein was prepared by me or under my direct supervision this \_\_\_\_\_ day of \_\_\_\_\_, 20\_\_\_\_.

SIGNATURE

Minnesota License No. \_\_\_\_\_

- County Surveyor  
 Deputy County Surveyor     Land Surveyor

OFFICE OF COUNTY SURVEYOR  
County of Ramsey

I hereby certify that this document was filed in the County Surveyor's office on the \_\_\_\_ day of \_\_\_\_\_, 20\_\_\_\_.

David D. Claypool, P.L.S., County Surveyor

By \_\_\_\_\_, Deputy

## MONUMENT 332

Found a granite monument down 0.89 ft. Set a 10 in. cast iron monument over granite monument, September 26, 1975.

Checked monument, April 17, 1977.

Monument destroyed by construction. Set a 20 in. cast iron monument, September, 1980.

Retied monument, June 5, 1981.

Retied monument, January 18, 1991.

Retied monument, July 17, 2002.

Concrete placed around top of monument in bituminous road surface, October 27, 2005.

Retied monument, August 24, 2007.