

MONUMENT 328

CERTIFICATE OF LOCATION OF GOVERNMENT CORNER

West Quarter Corner of Section 4, Township 29 North, Range 23 West, County of Ramsey, State of Minnesota.

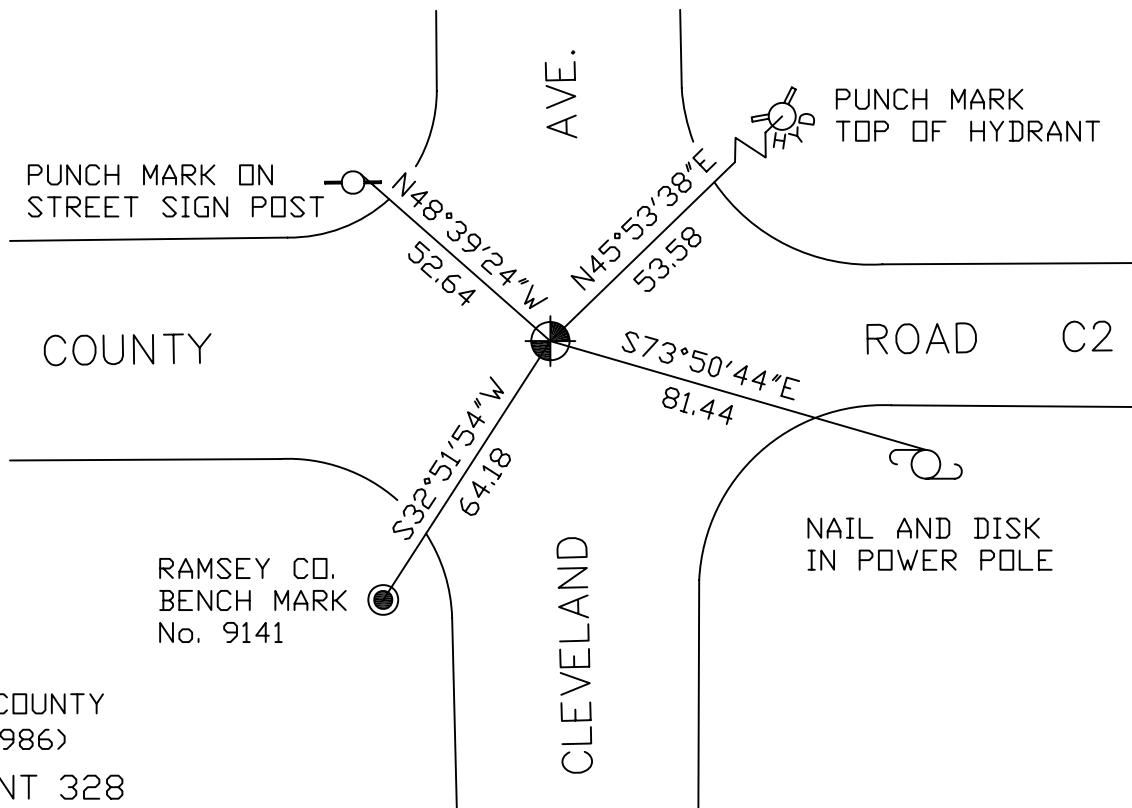
At the corner location shown on the sketch

On August 2, 2007 found a cast iron monument.

left monument as found lowered monument removed monument (explain)

On _____ placed a _____

SKETCH OF REFERENCE TIES



RAMSEY COUNTY
NAD83 (1986)
MONUMENT 328

X= 550638.169 (Easting)
Y= 186351.784 (Northing)

ALL DISTANCES ARE SHOWN IN U.S. SURVEY FEET.
BEARINGS ARE FOR TIE REFERENCE PURPOSES ONLY.

Statements of evidence relative to this corner are on the following page(s).

I hereby certify that this document and the data contained herein was prepared by me or under my direct supervision this _____ day of _____, 20____.

SIGNATURE

Minnesota License No. _____

- County Surveyor
 Deputy County Surveyor Land Surveyor

OFFICE OF COUNTY SURVEYOR
County of Ramsey

I hereby certify that this document was filed in the County Surveyor's office on the ____ day of _____, 20____.

David D. Claypool, P.L.S., County Surveyor

By _____, Deputy

MONUMENT 328

Found miscellaneous iron, 1974.

Found a granite monument down 1.6 ft. (not same position as iron),
October 31, 1975.

Placed a cast iron monument, November 5, 1975.

Retied monument, January 29, 1976.

Monument destroyed by construction, 1978.

Reset cast iron monument, March, 1981.

Tied monument, August 14, 1990.

Tied out monument for removal for road milling project, September 18, 1996.

Set a 20 in. cast iron monument, August 29, 1997.

Tied monument, July 15, 2002.

Retied monument, August 2, 2007.