

# MONUMENT 327E

## CERTIFICATE OF LOCATION OF GOVERNMENT CORNER

Witness Monument East of the Center of Section 5, Township 29 North,  
Range 23 West, County of Ramsey, State of Minnesota.

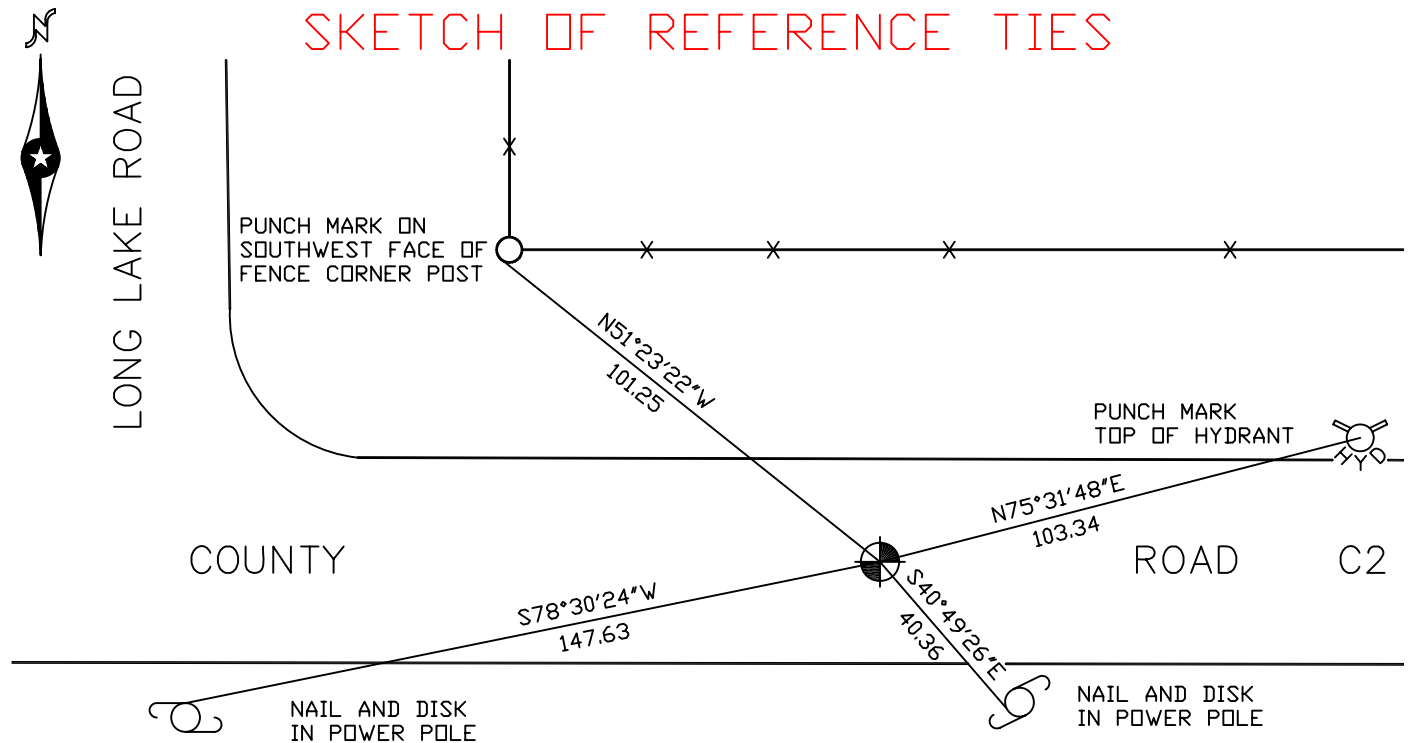
At the corner location shown on the sketch

On August 2, 2007 found a cast iron monument, down 0.2 feet.

left monument as found     lowered monument     removed monument (explain)

On \_\_\_\_\_ placed a \_\_\_\_\_

### SKETCH OF REFERENCE TIES



RAMSEY COUNTY  
NAD83 (1986)  
MONUMENT 327E

X= 548029.475 (Easting)  
Y= 186353.340 (Northing)

ALL DISTANCES ARE SHOWN IN U.S. SURVEY FEET.  
BEARINGS ARE FOR TIE REFERENCE PURPOSES ONLY.

Statements of evidence relative to this corner are on the following page(s).

I hereby certify that this document and the data contained herein was prepared by me or under my direct supervision this \_\_\_\_\_ day of \_\_\_\_\_, 20\_\_\_\_.

SIGNATURE

Minnesota License No. \_\_\_\_\_

- County Surveyor  
 Deputy County Surveyor     Land Surveyor

OFFICE OF COUNTY SURVEYOR  
County of Ramsey

I hereby certify that this document was filed in the County Surveyor's office on the \_\_\_\_ day of \_\_\_\_\_, 20\_\_\_\_.

David D. Claypool, P.L.S., County Surveyor

By \_\_\_\_\_, Deputy

# MONUMENT 327E

Found a manhole at monument location; no ties left, 1975.

Placed a 20 in. cast iron monument 33.00 ft. east on line to the east quarter corner of Section 5, no date in field book.

Tied monument, May 16, 1990.

Monument down 1.5 in., August 28, 1994.

Tied monument, July 16, 2002.

Retied monument, August 2, 2007.