

# MONUMENT 306

## CERTIFICATE OF LOCATION OF GOVERNMENT CORNER

South Quarter Corner of Section 33, Township 30 North, Range 23 West, County of Ramsey, State of Minnesota.

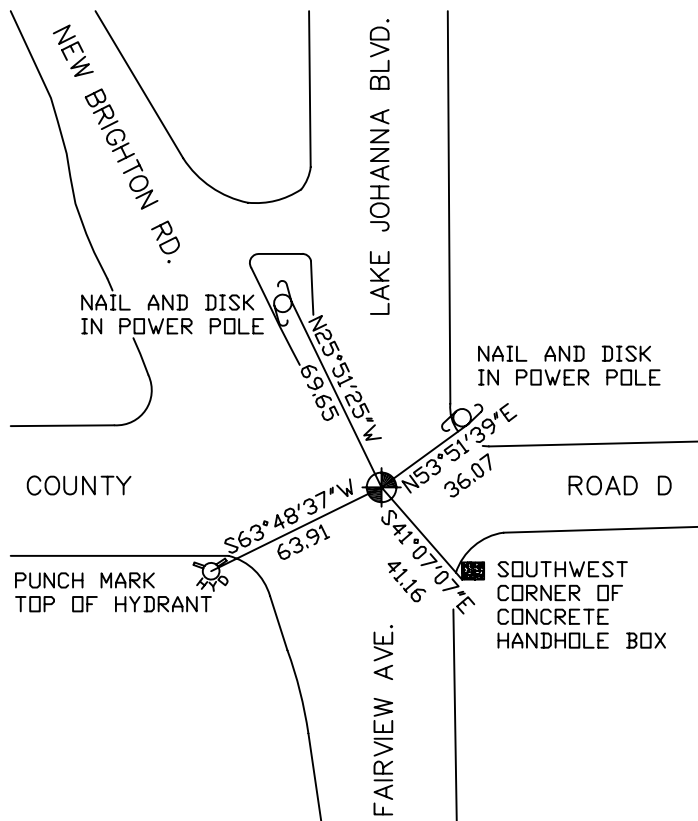
At the corner location shown on the sketch

On August 2, 2007 found a cast iron monument with broken top, center of shaft intact, down 0.2 feet.

left monument as found     lowered monument     removed monument (explain)

On \_\_\_\_\_ placed a \_\_\_\_\_

### SKETCH OF REFERENCE TIES



RAMSEY COUNTY  
NAD83 (1986)  
MONUMENT 306

X= 553215.394 (Easting)  
Y= 189261.778 (Northing)

ALL DISTANCES ARE SHOWN IN U.S. SURVEY FEET.  
BEARINGS ARE FOR TIE REFERENCE PURPOSES ONLY.

Statements of evidence relative to this corner are on the following page(s).

I hereby certify that this document and the data contained herein was prepared by me or under my direct supervision this \_\_\_\_\_ day of \_\_\_\_\_, 20\_\_\_\_.

SIGNATURE

Minnesota License No. \_\_\_\_\_

- County Surveyor  
 Deputy County Surveyor     Land Surveyor

OFFICE OF COUNTY SURVEYOR  
County of Ramsey

I hereby certify that this document was filed in the County Surveyor's office on the \_\_\_\_ day of \_\_\_\_\_, 20\_\_\_\_.

David D. Claypool, P.L.S., County Surveyor

By \_\_\_\_\_, Deputy

# MONUMENT 306

Found a cast iron monument flush and retied, September 24, 1974.

Retied monument, August 14, 1990.

Retied monument, July 16, 2002.

Retied monument, August 2, 2007.