

MONUMENT 302

CERTIFICATE OF LOCATION OF GOVERNMENT CORNER

South Quarter Corner of Section 31, Township 30 North, Range 23 West, County of Ramsey, State of Minnesota.

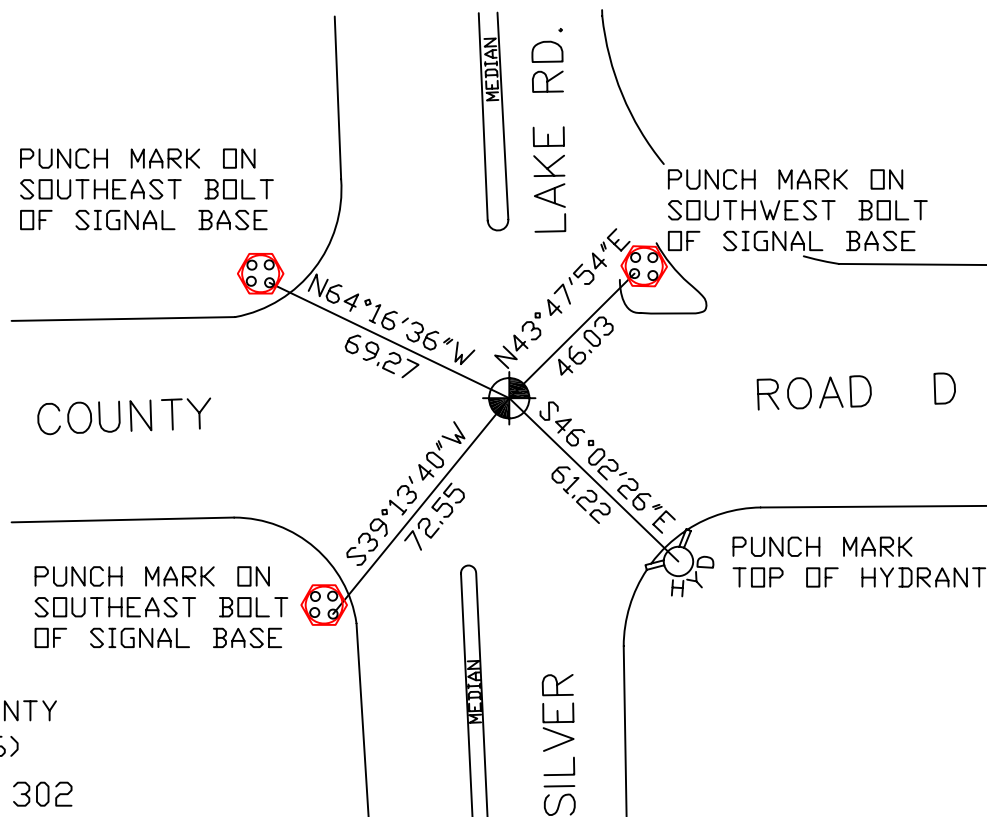
At the corner location shown on the sketch

On July 31, 2007 found a cast iron monument within a cast iron manhole assembly.

left monument as found lowered monument removed monument (explain)

On _____ placed a _____

SKETCH OF REFERENCE TIES



RAMSEY COUNTY
NAD83 (1986)
MONUMENT 302

X= 542676.986 (Easting)
Y= 189225.398 (Northing)

ALL DISTANCES ARE SHOWN IN U.S. SURVEY FEET.
BEARINGS ARE FOR TIE REFERENCE PURPOSES ONLY.

Statements of evidence relative to this corner are on the following page(s).

I hereby certify that this document and the data contained herein was prepared by me or under my direct supervision this _____ day of _____, 20____.

SIGNATURE

Minnesota License No. _____

- County Surveyor
 Deputy County Surveyor Land Surveyor

OFFICE OF COUNTY SURVEYOR
County of Ramsey

I hereby certify that this document was filed in the County Surveyor's office on the ____ day of _____, 20____.

David D. Claypool, P.L.S., County Surveyor

By _____, Deputy

MONUMENT 302

Found a cast iron monument flush, 1974.

Checked monument, May 9, 1977.

Monument removed for construction of Co. Rd. D, 1984.

Replaced with a 20 in. cast iron monument, 1985.

Tied out monument, May 16, 1990.

Tied out monument, November 8, 2002.

Reset 20 in. cast iron monument, down 1 ft., and placed a cast iron manhole assembly over monument, July 26, 2005.

Tied out monument, July 31, 2007.