

MONUMENT 301

CERTIFICATE OF LOCATION OF GOVERNMENT CORNER

Southwest Corner of Section 31, Township 30 North, Range 23 West, County of Ramsey, State of Minnesota.

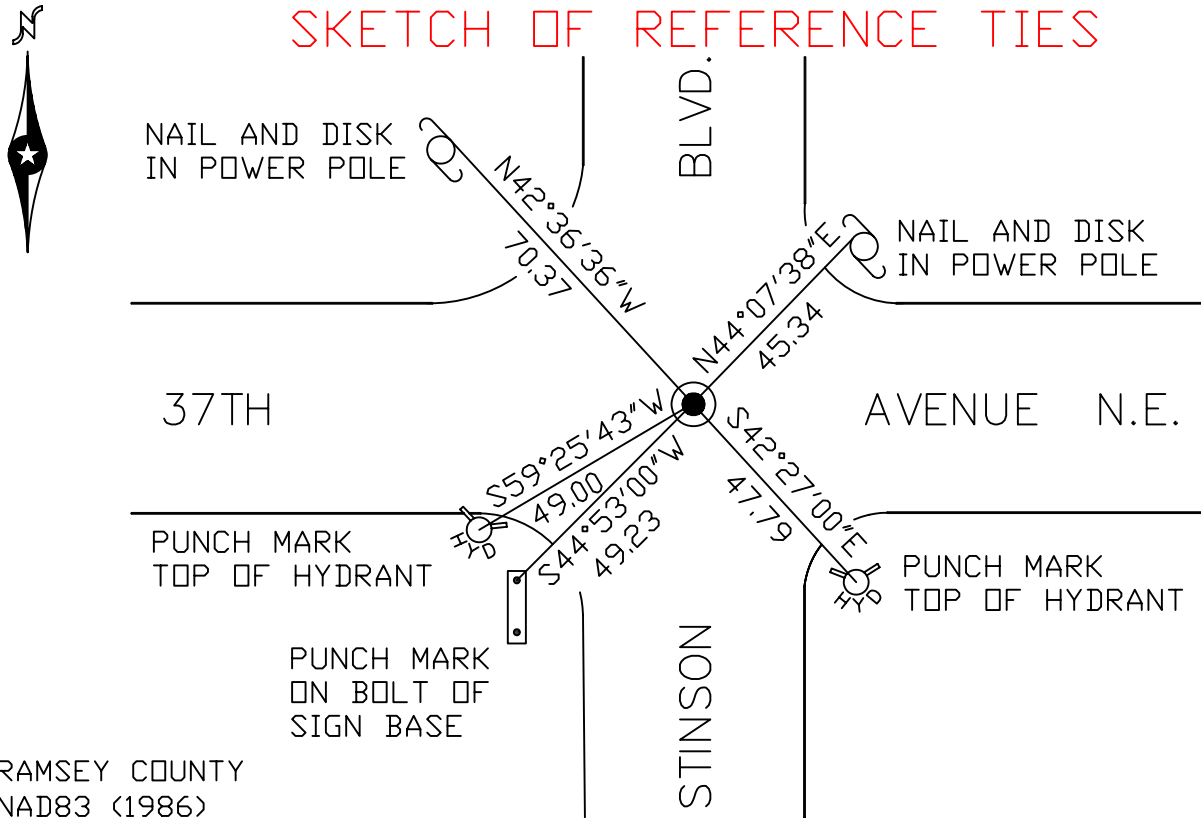
At the corner location shown on the sketch

On July 31, 2007 found a brass monument with stamped "X".

left monument as found lowered monument removed monument (explain)

On _____ placed a _____

SKETCH OF REFERENCE TIES



RAMSEY COUNTY
NAD83 (1986)

MONUMENT 301

X= 540434.838 (Easting)
Y= 189209.678 (Northing)

ALL DISTANCES ARE SHOWN IN U.S. SURVEY FEET.
BEARINGS ARE FOR TIE REFERENCE PURPOSES ONLY.

Statements of evidence relative to this corner are on the following page(s).

I hereby certify that this document and the data contained herein was prepared by me or under my direct supervision this _____ day of _____, 20____.

SIGNATURE

Minnesota License No. _____

- County Surveyor
 Deputy County Surveyor Land Surveyor

OFFICE OF COUNTY SURVEYOR
County of Ramsey

I hereby certify that this document was filed in the County Surveyor's office on the ____ day of _____, 20____.

David D. Claypool, P.L.S., County Surveyor

By _____, Deputy

MONUMENT 301

Found brass cap monument in place, in tube below pavement grade, 1975.

Checked monument, May 9, 1977.

Tied monument, May 16, 1990.

Tied monument, (hard to see, on south edge of monument assembly),
November 8, 2002.

Retied monument, July 31, 2007.