

MONUMENT 275

CERTIFICATE OF LOCATION OF GOVERNMENT CORNER

Northeast Corner of Section 36, Township 30 North, Range 22 West, County of Ramsey, State of Minnesota.

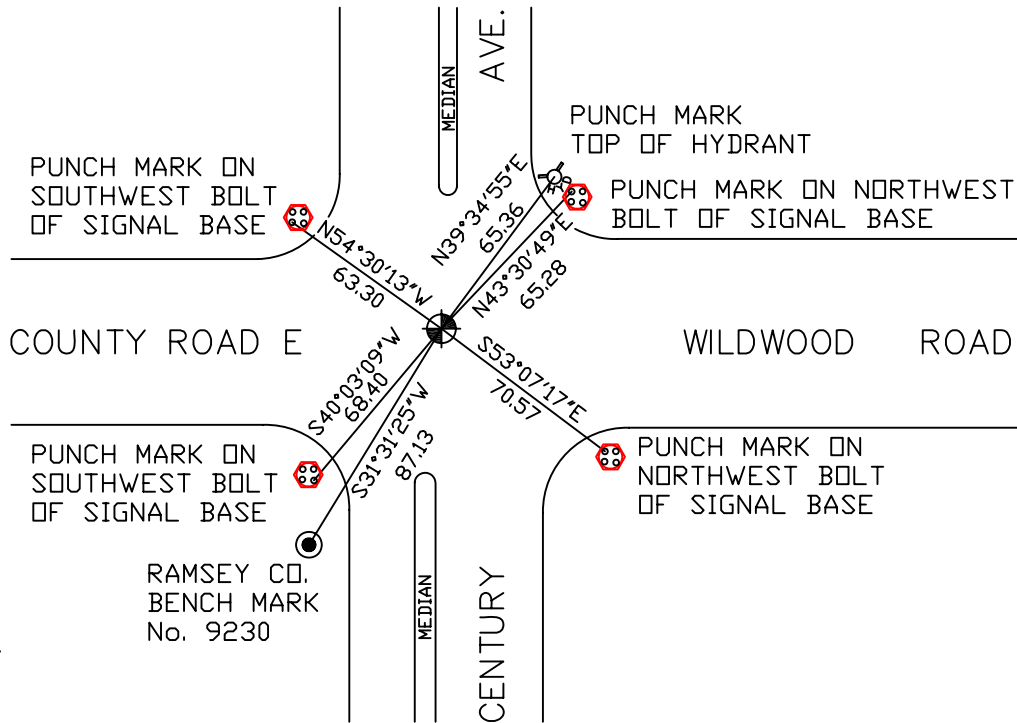
At the corner location shown on the sketch

On August 27, 2007 found a cast iron monument within a cast iron manhole assembly.

left monument as found lowered monument removed monument (explain)

On _____ placed a _____

SKETCH OF REFERENCE TIES



RAMSEY COUNTY
NAD83 (1986)

MONUMENT 275

X= 603017.844 (Easting)
Y= 194739.915 (Northing)

ALL DISTANCES ARE SHOWN IN U.S. SURVEY FEET.
BEARINGS ARE FOR TIE REFERENCE PURPOSES ONLY.

Statements of evidence relative to this corner are on the following page(s).

I hereby certify that this document and the data contained herein was prepared by me or under my direct supervision this _____ day of _____, 20____.

SIGNATURE

Minnesota License No. _____

- County Surveyor
 Deputy County Surveyor Land Surveyor

OFFICE OF COUNTY SURVEYOR
County of Ramsey

I hereby certify that this document was filed in the County Surveyor's office on the ____ day of _____, 20____.

David D. Claypool, P.L.S., County Surveyor

By _____, Deputy

MONUMENT 275

Found 1.5 in. solid iron, May 15, 1975.

Pulled iron, dug down +/- 4 ft., found nothing. Placed a cast iron monument, May 19, 1976. See "Survey Book No. 1", page 65.

Found cast iron monument broken off. Dug out and set 4 P.K. nails and checked location as per traverse work in book "White Bear", page 1, December 7, 1983.

Placed cast iron monument, December 12, 1983.

Monument destroyed by construction; replaced with a 20 in. cast iron monument, May, 1988.

Tied out monument, July 17, 1989.

Retied monument, September 22, 1999.

MN/DOT called and stated monument was broken; checked location and removed monument. Set a new 20 in. cast iron monument within a cast iron manhole assembly, August 20, 2001.

Tied out monument, August 27, 2007.