

# MONUMENT 255

## CERTIFICATE OF LOCATION OF GOVERNMENT CORNER

Northwest Corner of Section 33, Township 30 North, Range 23 West, County of Ramsey, State of Minnesota.

At the corner location shown on the sketch

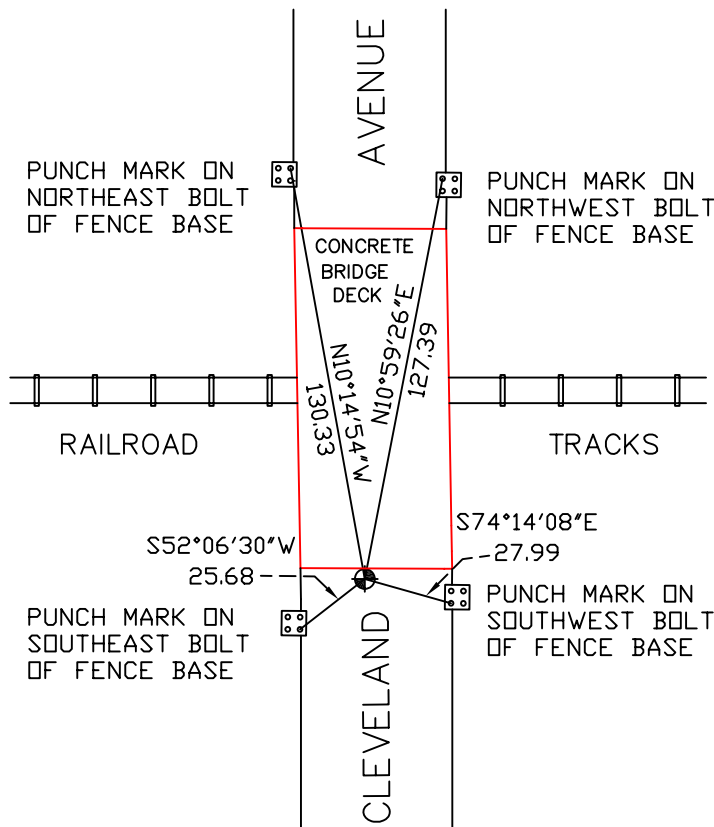
On July 13, 2007 found a cast iron monument, flush, 3.3 ft. south of concrete bridge deck.

left monument as found     lowered monument     removed monument (explain)

On \_\_\_\_\_ placed a \_\_\_\_\_



## SKETCH OF REFERENCE TIES



RAMSEY COUNTY  
NAD83 (1986)  
MONUMENT 255

X= 550546.482 (Easting)  
Y= 194517.112 (Northing)

ALL DISTANCES ARE SHOWN IN U.S. SURVEY FEET.  
BEARINGS ARE FOR TIE REFERENCE PURPOSES ONLY.

Statements of evidence relative to this corner are on the following page(s).

I hereby certify that this document and the data contained herein was prepared by me or under my direct supervision this \_\_\_\_\_ day of \_\_\_\_\_, 20\_\_\_\_.

SIGNATURE

Minnesota License No. \_\_\_\_\_

- County Surveyor  
 Deputy County Surveyor     Land Surveyor

OFFICE OF COUNTY SURVEYOR  
County of Ramsey

I hereby certify that this document was filed in the County Surveyor's office on the \_\_\_\_ day of \_\_\_\_\_, 20\_\_\_\_.

David D. Claypool, P.L.S., County Surveyor

By \_\_\_\_\_, Deputy

## MONUMENT 255

Old notes call for a granite monument with a cast iron monument on top.  
Found cast iron monument, up 4 in. under bridge and retied,  
September 24, 1974.

Found cast iron monument broken off. Dug down to granite monument and set  
new cast iron monument and checked ties, November 24, 1981.

Found cast iron monument tipped. Dug down to granite monument. Reset cast  
iron monument and retied, July 18, 1989.

Sign mounted horizontally on bridge truss, July 13, 1992.

Tied monument and removed 20 in. cast iron monument and left granite  
monument in place, April 27, 2000.

Relocated position and cemented 20 in. cast iron monument in pavement flush,  
August 21, 2001.

Tied monument, June 14, 2002.

Retied monument, July 13, 2007.