

# MONUMENT 234

## CERTIFICATE OF LOCATION OF GOVERNMENT CORNER

East Quarter Corner of Section 27, Township 30 North, Range 23 West, County of Ramsey, State of Minnesota.

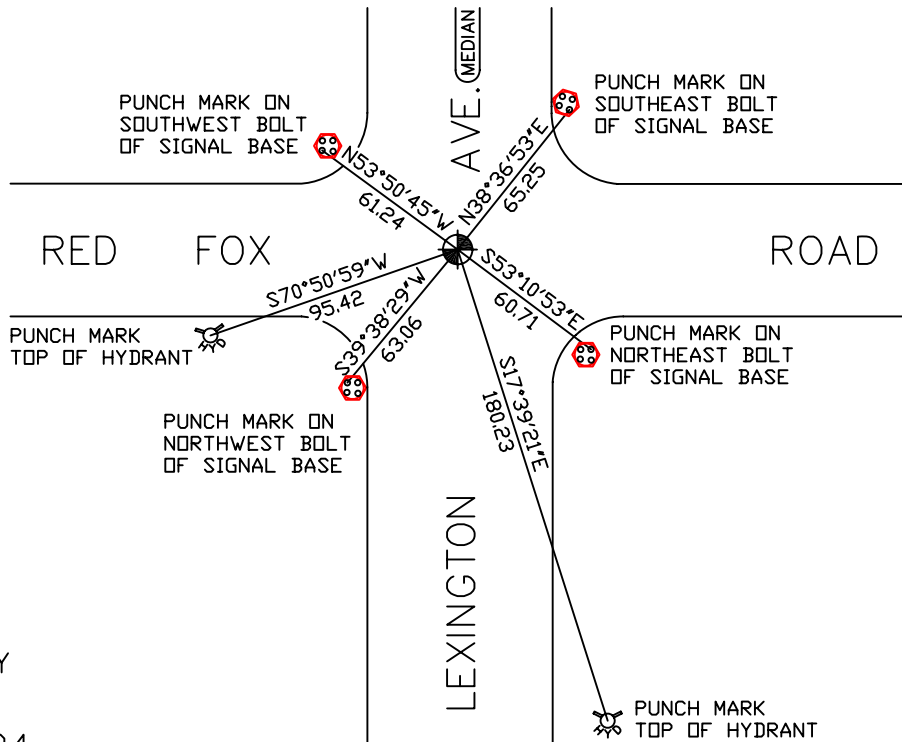
At the corner location shown on the sketch

On July 31, 2007 found a cast iron monument within a cast iron manhole assembly.

left monument as found     lowered monument     removed monument (explain)

On \_\_\_\_\_ placed a \_\_\_\_\_

## SKETCH OF REFERENCE TIES



RAMSEY COUNTY  
NAD83 (1986)  
MONUMENT 234

X= 561036.909 (Easting)  
Y= 197204.816 (Northing)

ALL DISTANCES ARE SHOWN IN U.S. SURVEY FEET.  
BEARINGS ARE FOR TIE REFERENCE PURPOSES ONLY.

Statements of evidence relative to this corner are on the following page(s).

I hereby certify that this document and the data contained herein was prepared by me or under my direct supervision this \_\_\_\_\_ day of \_\_\_\_\_, 20\_\_\_\_.

SIGNATURE

Minnesota License No. \_\_\_\_\_

- County Surveyor     Deputy County Surveyor     Land Surveyor

OFFICE OF COUNTY SURVEYOR  
County of Ramsey

I hereby certify that this document was filed in the County Surveyor's office on the \_\_\_\_ day of \_\_\_\_\_, 20\_\_\_\_.

David D. Claypool, P.L.S., County Surveyor

By \_\_\_\_\_, Deputy

## MONUMENT 234

Found boat spike at surface. Dug down 3.1 ft. and found nothing,  
July 15, 1975.

Dug down 5.25 ft. and found granite monument in old bituminous road  
surface, June 4, 1976.

Placed a 20 in. cast iron monument, June 23, 1976.

Monument removed for road construction by County. Replaced 20 in. cast  
iron monument, no date given in field book.

Tied out monument, June 5, 1990.

Retied monument, December 1, 1998.

Tied out monument for construction, April 23, 2000.

Lowered monument and set 12 in. tube around monument, May 4, 2000.

Set a cast iron manhole assembly over monument, June 20, 2000.

Tied monument, July 31, 2007.