

# MONUMENT 230

## CERTIFICATE OF LOCATION OF GOVERNMENT CORNER

West Quarter Corner of Section 28, Township 30 North, Range 23 West, County of Ramsey, State of Minnesota.

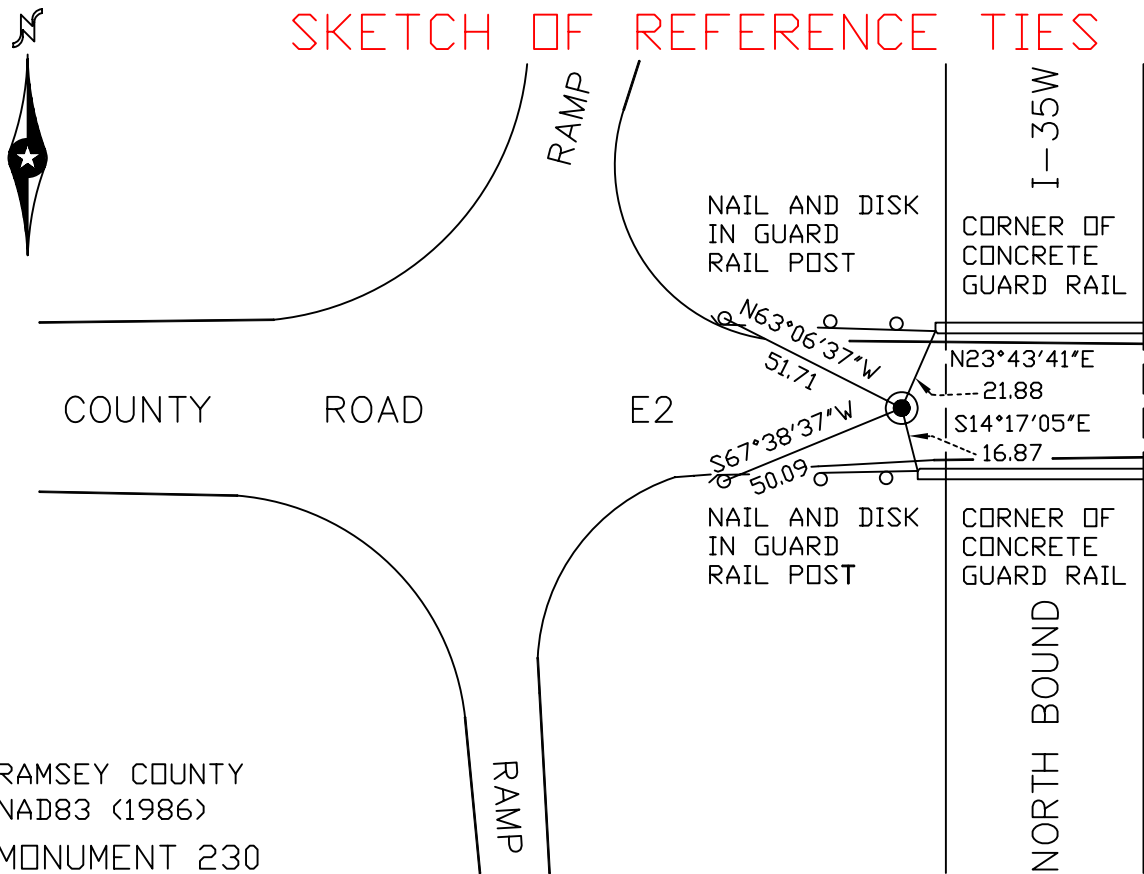
At the corner location shown on the sketch

On July 13, 2007 found a brass disk, flush with concrete bridge deck.

left monument as found     lowered monument     removed monument (explain)

On \_\_\_\_\_ placed a \_\_\_\_\_

### SKETCH OF REFERENCE TIES



RAMSEY COUNTY  
NAD83 (1986)  
MONUMENT 230

X= 550492.150 (Easting)  
Y= 197141.699 (Northing)

ALL DISTANCES ARE SHOWN IN U.S. SURVEY FEET.  
BEARINGS ARE FOR TIE REFERENCE PURPOSES ONLY.

Statements of evidence relative to this corner are on the following page(s).

I hereby certify that this document and the data contained herein was prepared by me or under my direct supervision this \_\_\_\_\_ day of \_\_\_\_\_, 20\_\_\_\_.

\_\_\_\_\_  
SIGNATURE

Minnesota License No. \_\_\_\_\_  
 County Surveyor  
 Deputy County Surveyor     Land Surveyor

OFFICE OF COUNTY SURVEYOR  
County of Ramsey

I hereby certify that this document was filed in the County Surveyor's office on the \_\_\_\_ day of \_\_\_\_\_, 20\_\_\_\_.

David D. Claypool, P.L.S., County Surveyor

By \_\_\_\_\_, Deputy

## MONUMENT 230

Found a cast iron monument flush and retied, September 24, 1974.

Retied monument, January 9, 1992.

Monument destroyed by bridge work between 1992 and 1997. Checked location on concrete bridge approach, September 23, 1997.

Set a 3.5 in. diameter brass disk, October 8, 1997.

Tied monument, June 14, 2002.

Retied monument, July 13, 2007.