

MONUMENT 205

CERTIFICATE OF LOCATION OF GOVERNMENT CORNER

Southwest Corner of Section 21, Township 30 North, Range 23 West, County of Ramsey, State of Minnesota.

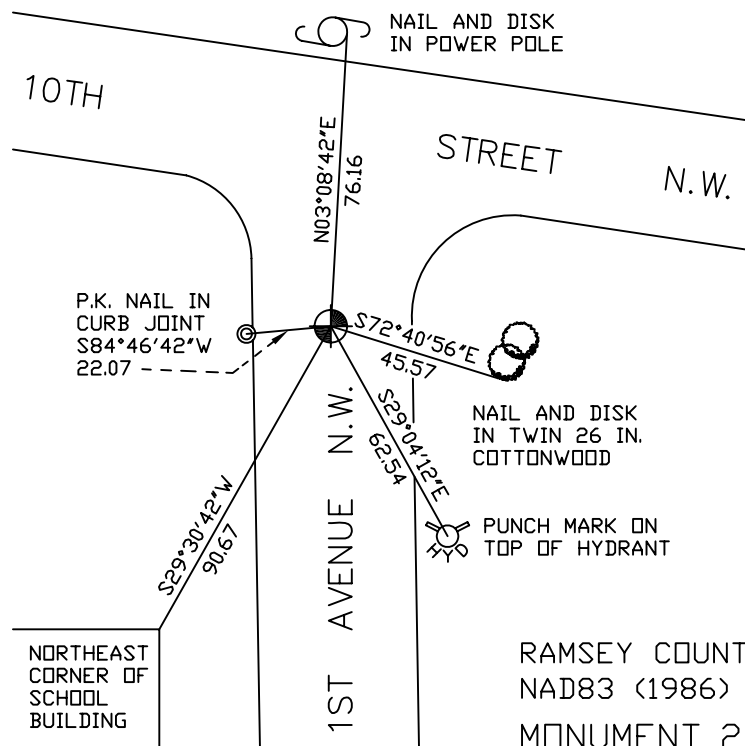
At the corner location shown on the sketch

On July 30, 2007 found a cast iron monument within a cast iron manhole assembly.

left monument as found lowered monument removed monument (explain)

On _____ placed a _____

SKETCH OF REFERENCE TIES



RAMSEY COUNTY
NAD83 (1986)
MONUMENT 205

ALL DISTANCES ARE SHOWN IN U.S. SURVEY FEET.
BEARINGS ARE FOR TIE REFERENCE PURPOSES ONLY.

X= 550441.913 (Easting)
Y= 199775.866 (Northing)

Statements of evidence relative to this corner are on the following page(s).

I hereby certify that this document and the data contained herein was prepared by me or under my direct supervision this _____ day of _____, 20____.

SIGNATURE

Minnesota License No. _____

- County Surveyor
 Deputy County Surveyor Land Surveyor

OFFICE OF COUNTY SURVEYOR
County of Ramsey

I hereby certify that this document was filed in the County Surveyor's office on the ____ day of _____, 20____.

David D. Claypool, P.L.S., County Surveyor

By _____, Deputy

MONUMENT 205

Found iron flush, February, 1976.

New Brighton reconstruction, 1987.

Dug for iron, found 1/2 in. by 14 in. iron, down 5.5 ft. in old road pavement; used post hole digger and went down 2 ft. deeper, did not find granite monument; set a 20 in. cast iron monument, 1989.

Retied cast iron monument, June 18, 1991.

Set monument down 18 in. and set manhole assembly over top, no date given in field book.

Retied monument, November 21, 2002.

Retied monument, July 30, 2007.