

MONUMENT 201

CERTIFICATE OF LOCATION OF GOVERNMENT CORNER

Southwest Corner of Section 19, Township 30 North, Range 23 West, County of Ramsey, State of Minnesota.

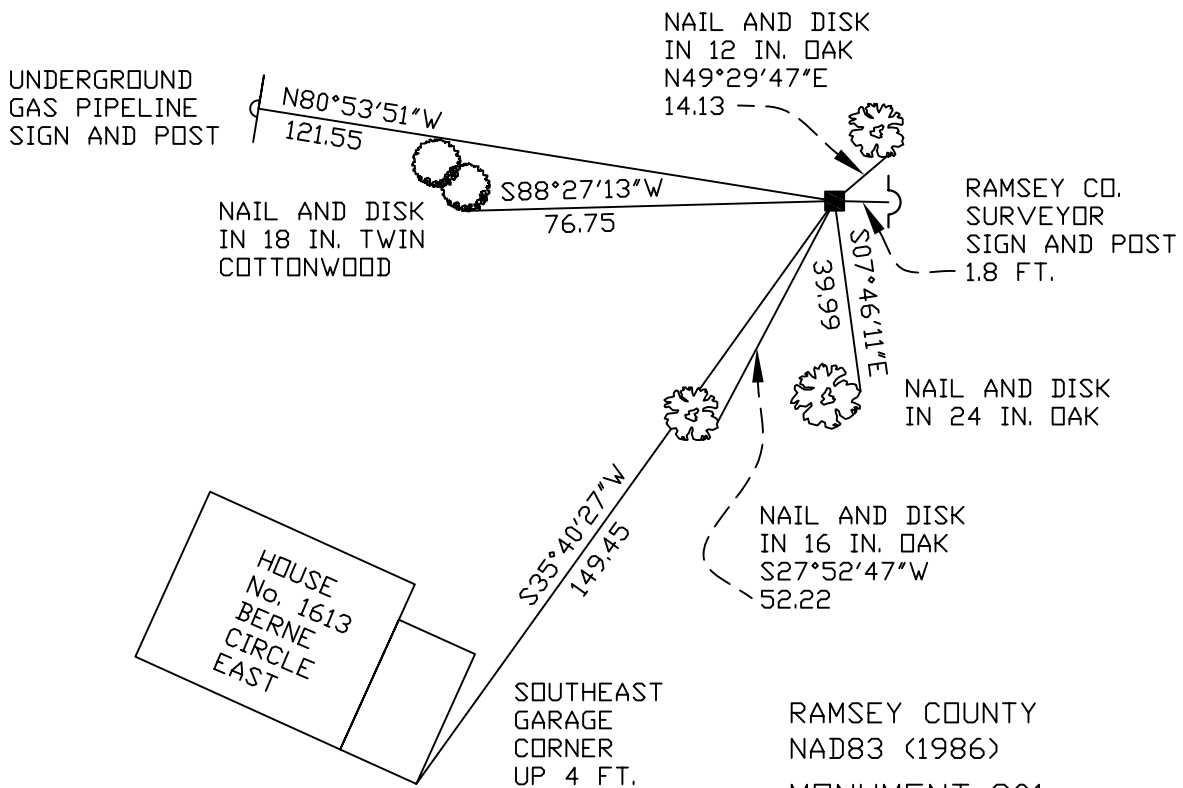
At the corner location shown on the sketch

On October 3, 2007 found a granite monument, up 0.3 ft.

left monument as found lowered monument removed monument (explain)

On _____ placed a _____

SKETCH OF REFERENCE TIES



ALL DISTANCES ARE SHOWN IN U.S. SURVEY FEET.
BEARINGS ARE FOR TIE REFERENCE PURPOSES ONLY.

X= 540341.805 (Easting)
Y= 199651.215 (Northing)

Statements of evidence relative to this corner are on the following page(s).

I hereby certify that this document and the data contained herein was prepared by me or under my direct supervision this _____ day of _____, 20____.

SIGNATURE

Minnesota License No. _____

- County Surveyor
 Deputy County Surveyor Land Surveyor

OFFICE OF COUNTY SURVEYOR

County of Ramsey

I hereby certify that this document was filed in the County Surveyor's office on the ____ day of _____, 20____.

David D. Claypool, P.L.S., County Surveyor

By _____, Deputy

MONUMENT 201

Found a granite monument flush and retied, October 25, 1974.

Retied monument, up +/- 0.3 ft. and set sign and post +/- 2 ft. easterly, January 7, 1992.

Retied granite monument, up +/- 0.3 ft., November 13, 2002.

Retied granite monument, up +/- 0.3 ft., October 3, 2007.