

MONUMENT 153S

CERTIFICATE OF LOCATION OF GOVERNMENT CORNER

Witness Monument to the South of the Southeast Corner of Section 18,
Township 30 North, Range 23 West, County of Ramsey, State of Minnesota.

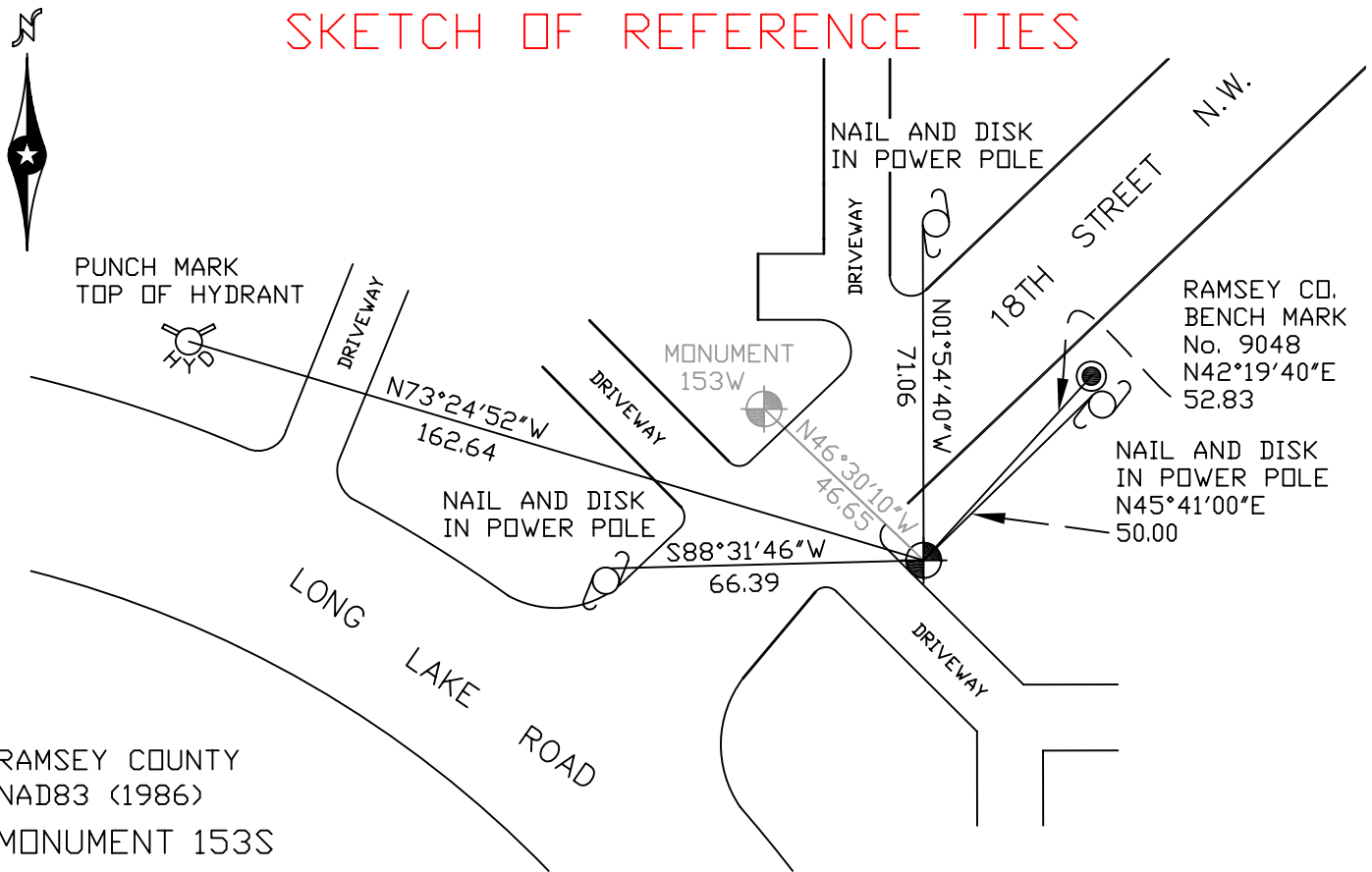
At the corner location shown on the sketch

On April 26, 2007 found a cast iron monument, flush.

left monument as found lowered monument removed monument (explain)

On _____ placed a _____

SKETCH OF REFERENCE TIES



RAMSEY COUNTY
NAD83 (1986)
MONUMENT 153S

X= 545108.509 (Easting)
Y= 205012.881 (Northing)

ALL DISTANCES ARE SHOWN IN U.S. SURVEY FEET.
BEARINGS ARE FOR TIE REFERENCE PURPOSES ONLY.

Statements of evidence relative to this corner are on the following page(s).

I hereby certify that this document and the data
contained herein was prepared by me or under
my direct supervision this _____ day
of _____, 20____.

SIGNATURE

Minnesota License No. _____

- County Surveyor
 Deputy County Surveyor Land Surveyor

OFFICE OF COUNTY SURVEYOR
County of Ramsey

I hereby certify that this document was filed in
the County Surveyor's office on the ____ day
of _____, 20____.

David D. Claypool, P.L.S., County Surveyor

By _____, Deputy

MONUMENT 153S

Found a manhole at corner location. Old ties mostly gone. See Survey Book No. 1, pages 60 and 61 for location determination. No date given in field book.

Retied monument, January 28, 1975.

Placed cast iron witness corner monument 33 ft. south of the true corner position and on line, October 30, 1975.

Removed cast iron monument for reconstruction, April, 1989.

Replaced corner position with 20 in. cast iron monument, July 3, 1990.

Retied monument, July 5, 1990.

Retied monument, December 2, 1998.

Retied monument, November 10, 2004.

Retied monument, April 26, 2007.