

# MONUMENT 13SC

## CERTIFICATE OF LOCATION OF GOVERNMENT CORNER

Northwest Corner of Section 6, Township 30 North, Range 22 West, County of Ramsey, State of Minnesota.

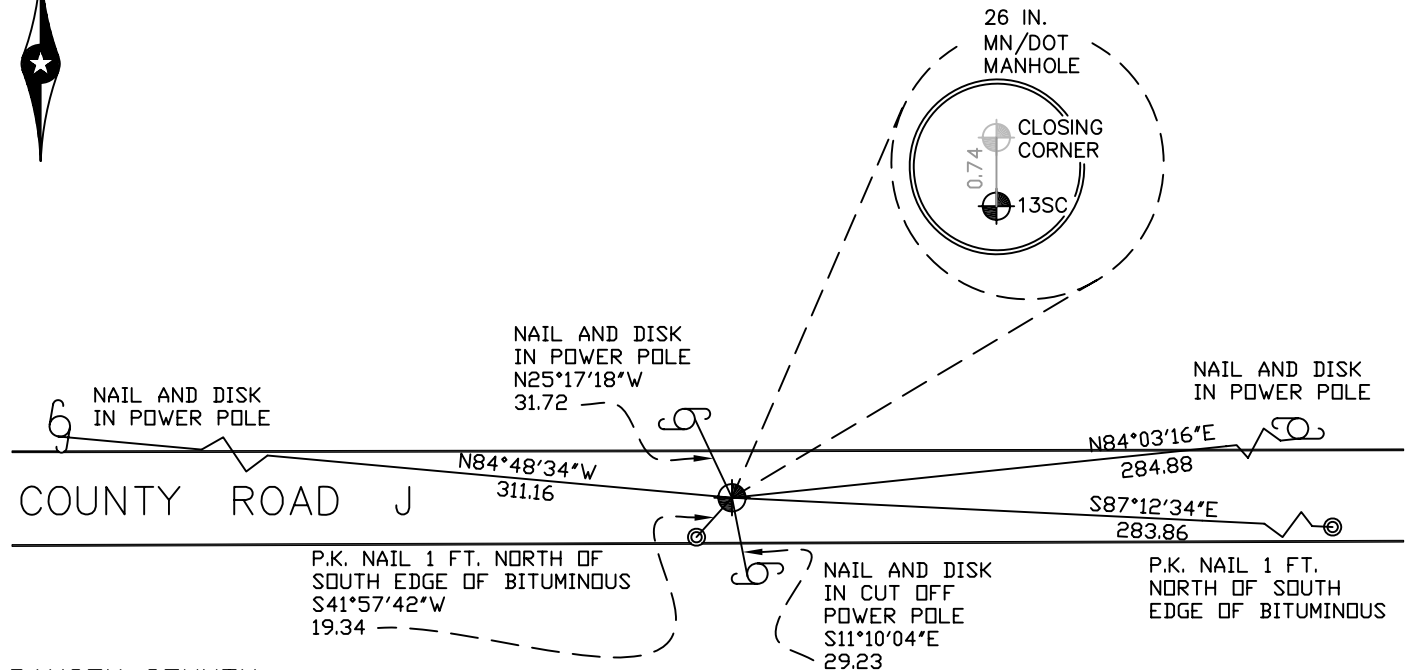
At the corner location shown on the sketch

On July 3, 2007 found a cast iron monument within a 26 in. MN/DOT manhole assembly.

left monument as found     lowered monument     removed monument (explain)

On \_\_\_\_\_ placed a \_\_\_\_\_

## SKETCH OF REFERENCE TIES



RAMSEY COUNTY  
NAD83 (1986)  
MONUMENT 13SC

X= 571327.285 (Easting)  
Y= 221537.222 (Northing)

ALL DISTANCES ARE SHOWN IN U.S. SURVEY FEET.  
BEARINGS ARE FOR TIE REFERENCE PURPOSES ONLY.

Statements of evidence relative to this corner are on the following page(s).

I hereby certify that this document and the data contained herein was prepared by me or under my direct supervision this \_\_\_\_\_ day of \_\_\_\_\_, 20\_\_\_\_.

SIGNATURE

Minnesota License No. \_\_\_\_\_

- County Surveyor  
 Deputy County Surveyor     Land Surveyor

OFFICE OF COUNTY SURVEYOR  
County of Ramsey

I hereby certify that this document was filed in the County Surveyor's office on the \_\_\_\_ day of \_\_\_\_\_, 20\_\_\_\_.

David D. Claypool, P.L.S., County Surveyor

By \_\_\_\_\_, Deputy

# MONUMENT 13SC

Found a  $\frac{3}{4}$  in. iron pipe in concrete; dug down 1.2 ft. and found 2 in. square iron with flange down +/- 3.5 ft., August 27, 1974.

Placed a cast iron monument over 2 in. square iron with cement at base, August 28, 1974.

Retied monument, October 25, 1974.

Placed a 4 1/2 in. cast iron monument; 2 in. square iron down 1.15 ft., June 28, 1985.

Tied monument for construction removal, April, 1990.

Removed cast iron monument, May 31, 1990.

Placed a short cast iron monument (4 5/8 in.) in quick set cement and rocks, October 30, 1990.

Retied monument, January 27, 1993.

Set a 20 in. cast iron monument marked "3rd Corr. Line" 0.75 ft. south of closing corner (original granite monument location), July 26, 1995.

Maintenance Department filled 1.2 ft., Summer of 1998.

Maintenance Department set a 27 in. manhole assembly over monuments (down 1.2 ft.) in old pavement, July 25, 2002.

Tied out monument 13SC, July 3, 2007.