

# MONUMENT 136

## CERTIFICATE OF LOCATION OF GOVERNMENT CORNER

East Quarter Corner of Section 14, Township 30 North, Range 23 West, County of Ramsey, State of Minnesota.

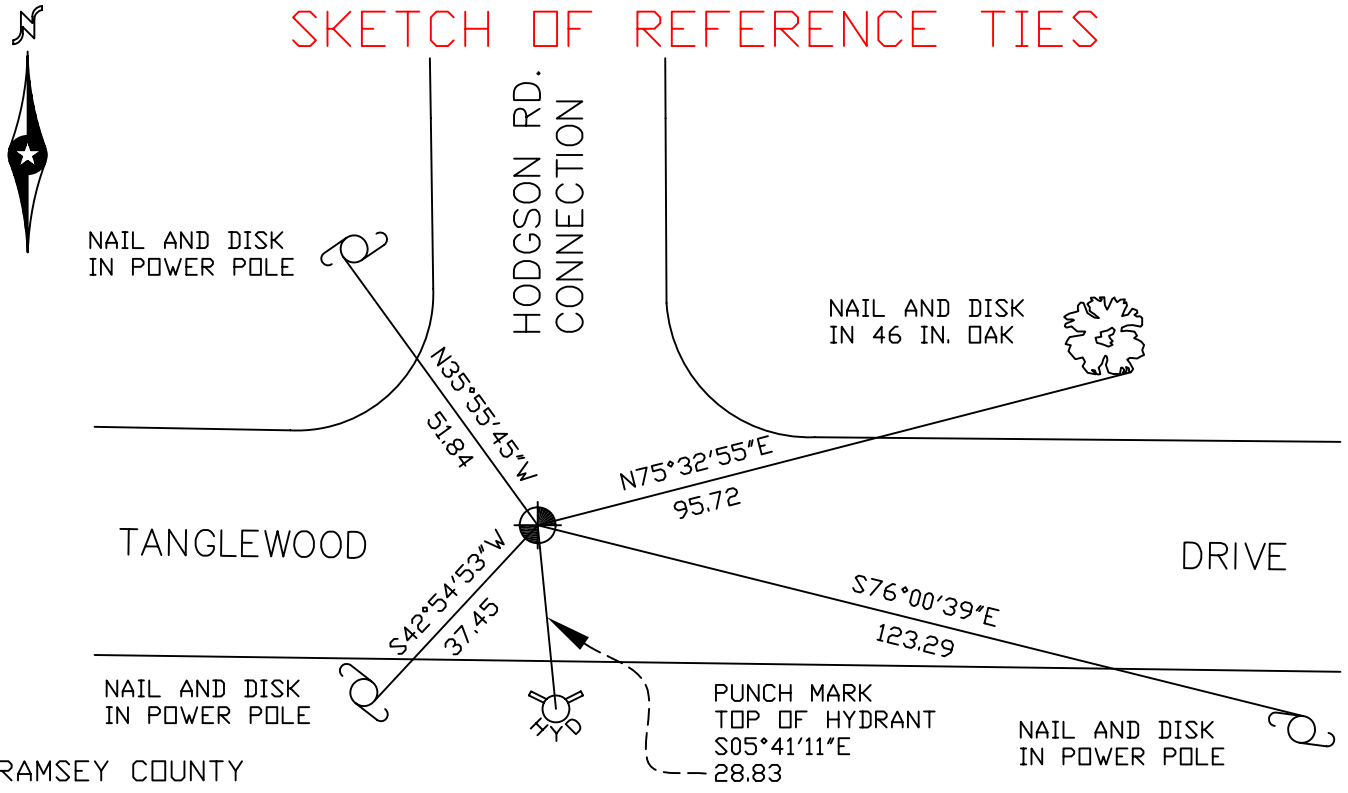
At the corner location shown on the sketch

On July 19, 2007 found a cast iron monument flush.

left monument as found     lowered monument     removed monument (explain)

On \_\_\_\_\_ placed a \_\_\_\_\_

### SKETCH OF REFERENCE TIES



RAMSEY COUNTY  
NAD83 (1986)

MONUMENT 136

X= 566206.403 (Easting)  
Y= 207812.783 (Northing)

ALL DISTANCES ARE SHOWN IN U.S. SURVEY FEET.  
BEARINGS ARE FOR TIE REFERENCE PURPOSES ONLY.

Statements of evidence relative to this corner are on the following page(s).

I hereby certify that this document and the data contained herein was prepared by me or under my direct supervision this \_\_\_\_\_ day of \_\_\_\_\_, 20\_\_\_\_.

SIGNATURE

Minnesota License No. \_\_\_\_\_

- County Surveyor  
 Deputy County Surveyor     Land Surveyor

OFFICE OF COUNTY SURVEYOR  
County of Ramsey

I hereby certify that this document was filed in the County Surveyor's office on the \_\_\_\_ day of \_\_\_\_\_, 20\_\_\_\_.

David D. Claypool, P.L.S., County Surveyor

By \_\_\_\_\_, Deputy

## MONUMENT 136

Found a granite monument, down 0.3 ft.; set a cast iron cap and bolt monument and retied, June 13, 1974.

Removed cast iron cap monument for City of Shoreview construction, July 18, 1989.

Placed 20 in. cast iron monument and retied, June 29, 1990.

Retied monument, November 29, 2002.

Placed concrete around monument, September 21, 2005.

Retied monument, July 19, 2007.