

MONUMENT 135

CERTIFICATE OF LOCATION OF GOVERNMENT CORNER

Center of Section 14, Township 30 North, Range 23 West, County of Ramsey,
State of Minnesota.

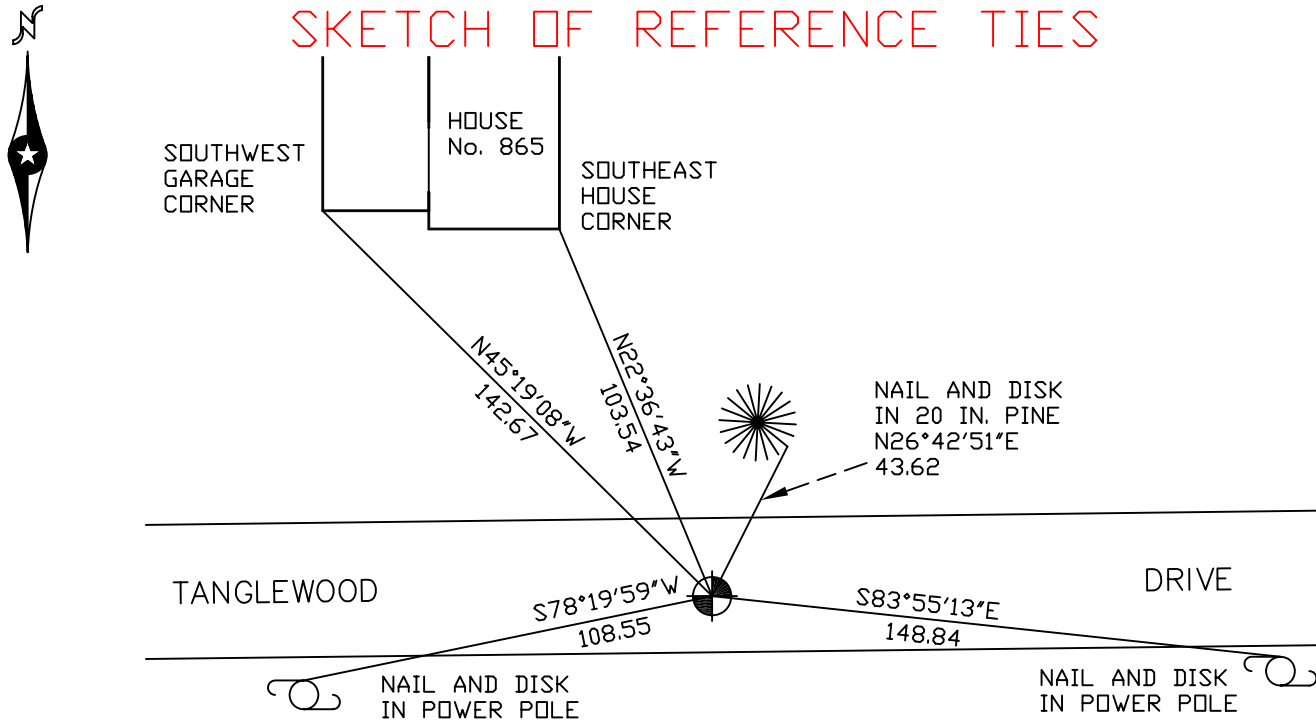
At the corner location shown on the sketch

On July 19, 2007 found a cast iron monument, flush.

left monument as found lowered monument removed monument (explain)

On _____ placed a _____

SKETCH OF REFERENCE TIES



RAMSEY COUNTY
NAD83 (1986)

MONUMENT 135

X= 563577.110 (Easting)
Y= 207781.179 (Northing)

ALL DISTANCES ARE SHOWN IN U.S. SURVEY FEET.
BEARINGS ARE FOR TIE REFERENCE PURPOSES ONLY.

Statements of evidence relative to this corner are on the following page(s).

I hereby certify that this document and the data contained herein was prepared by me or under my direct supervision this _____ day of _____, 20____.

SIGNATURE

Minnesota License No. _____

- County Surveyor
 Deputy County Surveyor Land Surveyor

OFFICE OF COUNTY SURVEYOR
County of Ramsey

I hereby certify that this document was filed in the County Surveyor's office on the ____ day of _____, 20____.

David D. Claypool, P.L.S., County Surveyor

By _____, Deputy

MONUMENT 135

Found granite monument down 0.3 ft.; placed a cast iron cap and bolt monument and retied, June 13, 1974.

Removed monument for city, July 18, 1989.

Located monument position and tied, June 29, 1990.

Placed a 20 in. cast iron monument, July, 1990.

Cemented in cast iron monument, August 17, 1994.

Retied monument, November 22, 2002.

Retied monument, July 19, 2007.