

# MONUMENT 134

## CERTIFICATE OF LOCATION OF GOVERNMENT CORNER

East Quarter Corner of Section 15, Township 30 North, Range 23 West,  
County of Ramsey, State of Minnesota.

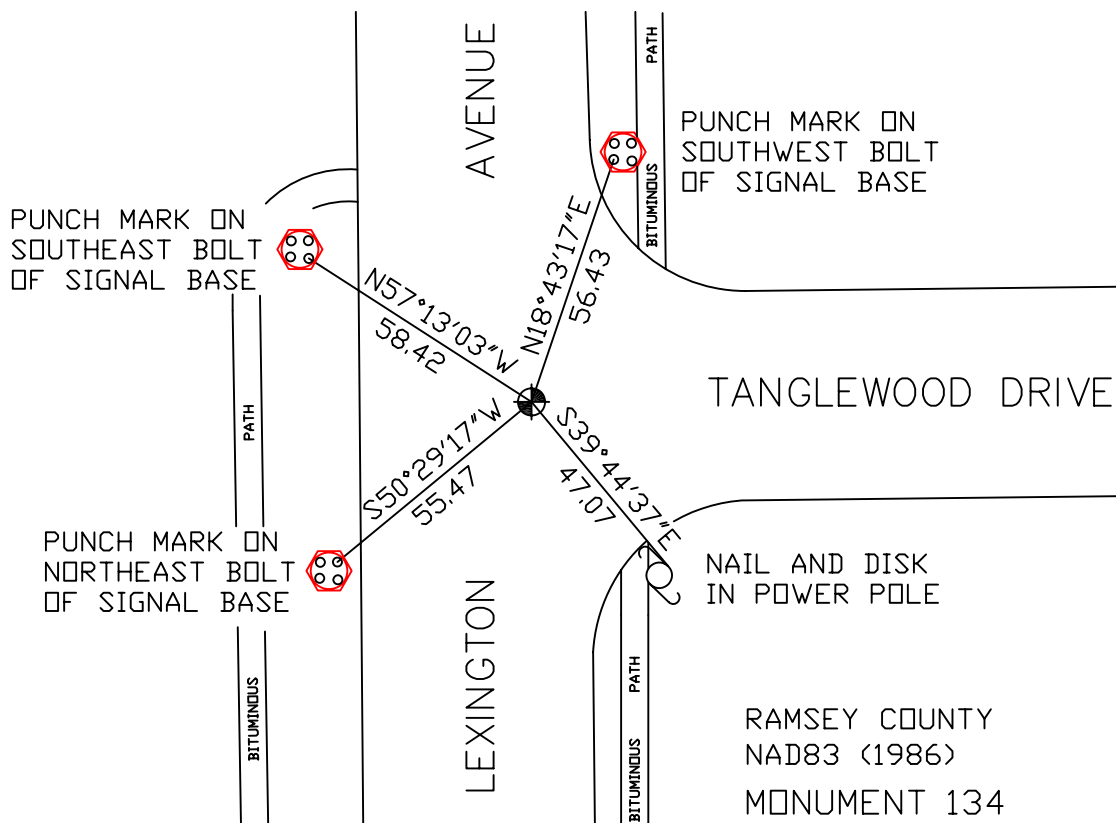
At the corner location shown on the sketch

On July 19, 2007 found a cast iron monument within a cast iron manhole assembly.

left monument as found     lowered monument     removed monument (explain)

On \_\_\_\_\_ placed a \_\_\_\_\_

### SKETCH OF REFERENCE TIES



ALL DISTANCES ARE SHOWN IN U.S. SURVEY FEET.  
BEARINGS ARE FOR TIE REFERENCE PURPOSES ONLY.

RAMSEY COUNTY  
NAD83 (1986)  
MONUMENT 134

X= 560943.133 (Easting)  
Y= 207749.312 (Northing)

Statements of evidence relative to this corner are on the following page(s).

I hereby certify that this document and the data contained herein was prepared by me or under my direct supervision this \_\_\_\_\_ day of \_\_\_\_\_, 20\_\_\_\_.

\_\_\_\_\_  
SIGNATURE

Minnesota License No. \_\_\_\_\_

- County Surveyor  
 Deputy County Surveyor     Land Surveyor

OFFICE OF COUNTY SURVEYOR  
County of Ramsey

I hereby certify that this document was filed in the County Surveyor's office on the \_\_\_\_ day of \_\_\_\_\_, 20\_\_\_\_.

David D. Claypool, P.L.S., County Surveyor

By \_\_\_\_\_, Deputy

## MONUMENT 134

Found iron in concrete; granite monument down 0.24 ft.; placed a bolt and cast iron cap monument, July 17, 1975.

Retied monument, July 28, 1975.

Removed monument for reconstruction of Lexington Avenue, no date given in field book.

Reset monument, no date given in field book.

Retied monument, May 4, 1990.

Cemented around top of monument, October 1, 1997.

Cemented around top of monument, June 8, 2000.

Retied monument, March 20, 2001.

Removed and lowered cast iron monument; set a 12 in. tube around monument for road maintenance, April 30, 2002.

Found a cast iron monument within a cast iron manhole assembly and tied out, July 19, 2007.