

# MONUMENT 109

## CERTIFICATE OF LOCATION OF GOVERNMENT CORNER

Northeast Corner of Section 15, Township 30 North, Range 23 West, County of Ramsey, State of Minnesota.

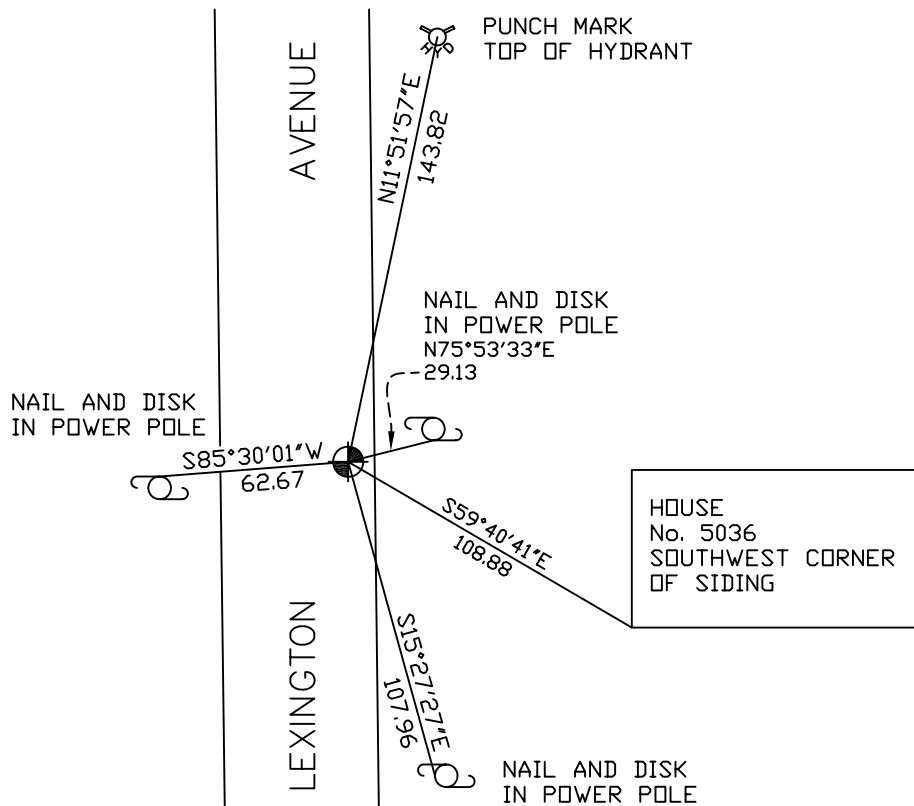
At the corner location shown on the sketch

On July 10, 2007 found a cast iron monument within a cast iron manhole assembly.

left monument as found     lowered monument     removed monument (explain)

On \_\_\_\_\_ placed a \_\_\_\_\_

## SKETCH OF REFERENCE TIES



RAMSEY COUNTY  
NAD83 (1986)  
MONUMENT 109

X= 560914.503 (Easting)  
Y= 210382.296 (Northing)

ALL DISTANCES ARE SHOWN IN U.S. SURVEY FEET.  
BEARINGS ARE FOR TIE REFERENCE PURPOSES ONLY.

Statements of evidence relative to this corner are on the following page(s).

I hereby certify that this document and the data contained herein was prepared by me or under my direct supervision this \_\_\_\_\_ day of \_\_\_\_\_, 20\_\_\_\_.

SIGNATURE

Minnesota License No. \_\_\_\_\_

- County Surveyor  
 Deputy County Surveyor     Land Surveyor

OFFICE OF COUNTY SURVEYOR  
County of Ramsey

I hereby certify that this document was filed in the County Surveyor's office on the \_\_\_\_ day of \_\_\_\_\_, 20\_\_\_\_.

David D. Claypool, P.L.S., County Surveyor

By \_\_\_\_\_, Deputy

## MONUMENT 109

Found a granite monument, down 0.29 ft.; set a bolt and cast iron cap monument, July 16, 1975.

Retied monument, July 28, 1975.

Tied monument and removed cap monument for construction; granite monument destroyed, April 30, 1990.

Set a 20 in. cast iron monument, August 21, 1991.

Tied and cemented around monument, August 29, 1991.

Removed and lowered cast iron monument; set a 12 in. tube around monument for Maintenance Department, April 30, 2002.

Set a cast iron manhole assembly over monument, May 14, 2002.

Retied monument, November 22, 2002.

Retied monument, July 10, 2007.