

MONUMENT 109E

CERTIFICATE OF LOCATION OF GOVERNMENT CORNER

Meander Corner No. 12 on west side of Turtle Lake on the South line of Section 11, Township 30 North, Range 23 West, County of Ramsey, State of Minnesota.

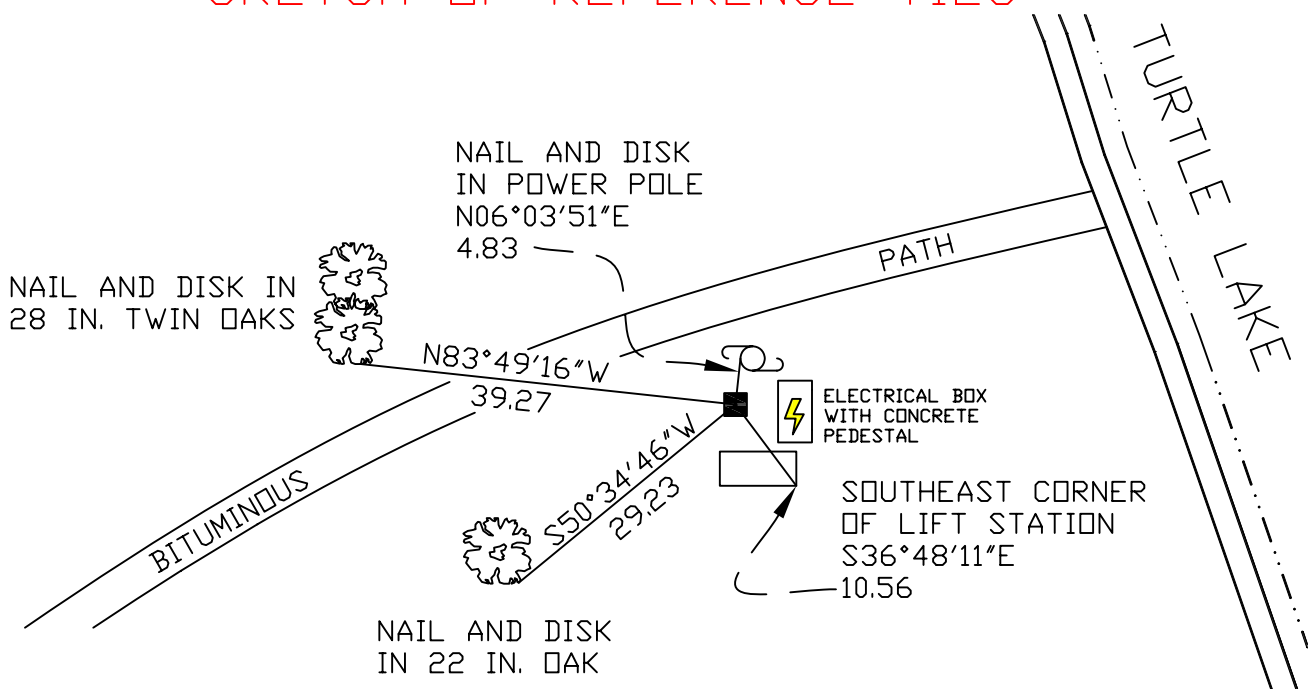
At the corner location shown on the sketch

On July 10, 2007 found a granite monument within a cast iron manhole assembly.

left monument as found lowered monument removed monument (explain)

On _____ placed a _____

SKETCH OF REFERENCE TIES



RAMSEY COUNTY
NAD83 (1986)
MONUMENT 109E

ALL DISTANCES ARE SHOWN IN U.S. SURVEY FEET.
BEARINGS ARE FOR TIE REFERENCE PURPOSES ONLY.

X= 561846.777 (Easting)
Y= 210399.115 (Northing)

Statements of evidence relative to this corner are on the following page(s).

I hereby certify that this document and the data contained herein was prepared by me or under my direct supervision this _____ day of _____, 20____.

SIGNATURE

Minnesota License No. _____

- County Surveyor
 Deputy County Surveyor Land Surveyor

OFFICE OF COUNTY SURVEYOR
County of Ramsey

I hereby certify that this document was filed in the County Surveyor's office on the ____ day of _____, 20____.

David D. Claypool, P.L.S., County Surveyor

By _____, Deputy

MONUMENT 109E

Reset a granite monument, May 27, 1948.

Found a granite monument down 7 in.; placed a cast iron cap monument, June, 1975.

Retied monument, July 29, 1975.

Cast iron cap monument removed, January 16, 1987.

Cast iron manhole assembly placed over granite monument, October 2, 2002.

Retied monument, November 22, 2002.

Retied monument, July 10, 2007.