

# MONUMENT 783

## CERTIFICATE OF LOCATION OF GOVERNMENT CORNER

Southwest Corner of Section 24, Township 28 North, Range 22 West, County of Ramsey, State of Minnesota.

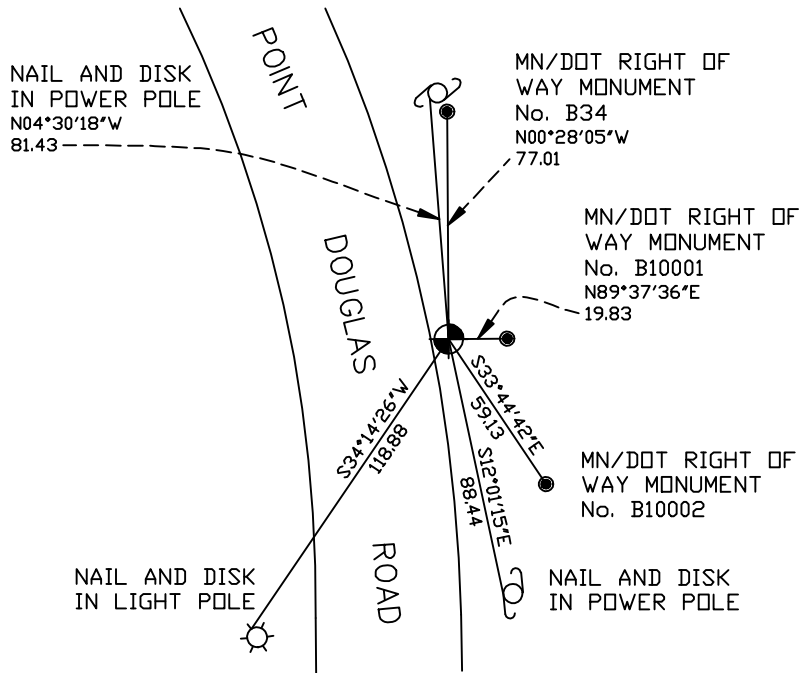
At the corner location shown on the sketch

On August 22, 2006 found a cast iron monument, flush, with sign and post  
1 ft. east.

left monument as found     lowered monument     removed monument (explain)

On \_\_\_\_\_ placed a \_\_\_\_\_

## SKETCH OF REFERENCE TIES



RAMSEY COUNTY  
NAD83 (1986)

MONUMENT 783

X= 598234.460 (Easting)  
Y= 136565.497 (Northing)

ALL DISTANCES ARE SHOWN IN U.S. SURVEY FEET.  
BEARINGS ARE FOR TIE REFERENCE PURPOSES ONLY.

Statements of evidence relative to this corner are on the following page(s).

I hereby certify that this document and the data contained herein was prepared by me or under my direct supervision this \_\_\_\_\_ day of \_\_\_\_\_, 20\_\_\_\_.

SIGNATURE

Minnesota License No. \_\_\_\_\_

County Surveyor     Land Surveyor

OFFICE OF COUNTY SURVEYOR

County of Ramsey

I hereby certify that this document was filed in the County Surveyor's office on the \_\_\_\_ day of \_\_\_\_\_, 20\_\_\_\_.

David D. Claypool, P.L.S., County Surveyor

By \_\_\_\_\_, Deputy

## MONUMENT 783

**Found a granite monument, up 0.2 ft., no date given in field book.**

**Tied monument, August 11, 1989.**

**Retied granite monument, up +/- 0.1 ft., April 17, 2001.**

**Tied monument out; removed by Mn/DOT construction, September 9, 2002.**

**Set a 20 in. cast iron monument with base in concrete, 0.2 ft. below ground level, April 8, 2004.**

**Tied monument, August 22, 2006.**