

MONUMENT 77

CERTIFICATE OF LOCATION OF GOVERNMENT CORNER

Center of Section 7, Township 30 North, Range 23 West, County of Ramsey,
State of Minnesota.

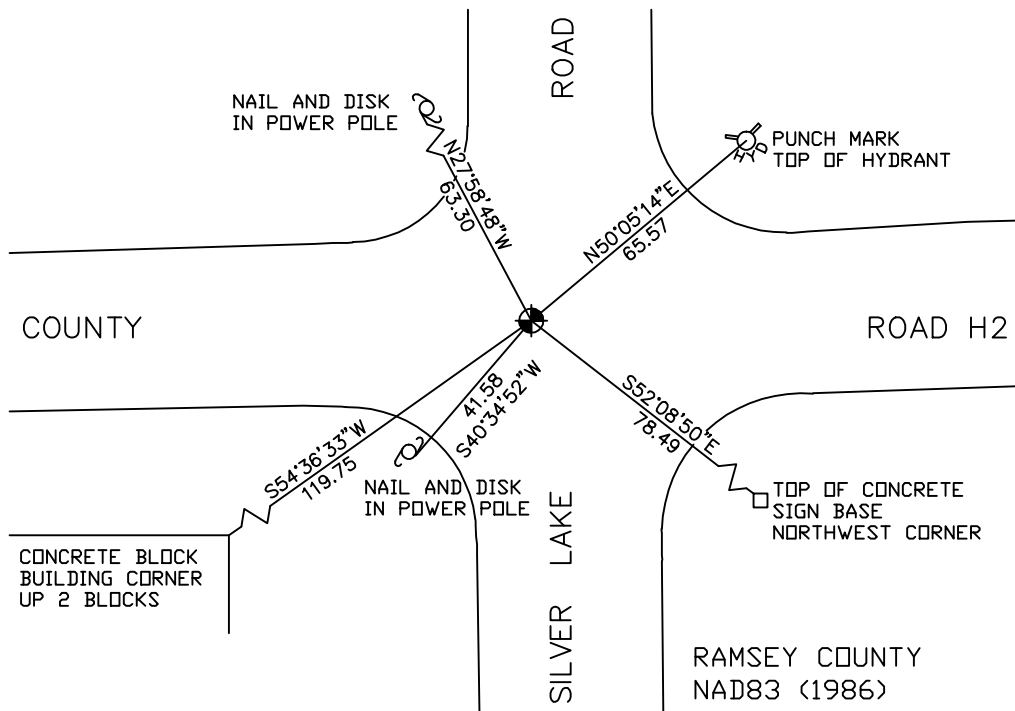
At the corner location shown on the sketch

On August 28, 2006 found a cast iron monument, down 18 inches within a cast iron manhole assembly.

left monument as found lowered monument removed monument (explain)

On _____ placed a _____

SKETCH OF REFERENCE TIES



RAMSEY COUNTY
NAD83 (1986)
MONUMENT 77

ALL DISTANCES ARE SHOWN IN U.S. SURVEY FEET.
BEARINGS ARE FOR TIE REFERENCE PURPOSES ONLY.

X= 542418.809 (Easting)
Y= 212885.865 (Northing)

Statements of evidence relative to this corner are on the following page(s).

I hereby certify that this document and the data contained herein was prepared by me or under my direct supervision this _____ day of _____, 20____.

SIGNATURE

Minnesota License No. _____

County Surveyor Land Surveyor

OFFICE OF COUNTY SURVEYOR

County of Ramsey

I hereby certify that this document was filed in the County Surveyor's office on the ____ day of _____, 20____.

David D. Claypool, P.L.S., County Surveyor

By _____, Deputy

MONUMENT 77

Found cast iron monument down 0.1 ft. and retied, August 19, 1975.

Retied monument, September 17, 1993.

Retied monument, down 0.25 ft., March 19, 2001.

Retied monument for City of Mounds View road reconstruction, August 12, 2002.

Relocated position; set 20 in. cast iron monument within a cast iron manhole assembly, May 20, 2003.

Retied monument, August 28, 2006.