

# MONUMENT 762N

## CERTIFICATE OF LOCATION OF GOVERNMENT CORNER

Meander Corner No. 14 on East Line of the Northeast Quarter of Section 24,  
Township 28 North, Range 22 West, County of Ramsey, State of Minnesota.

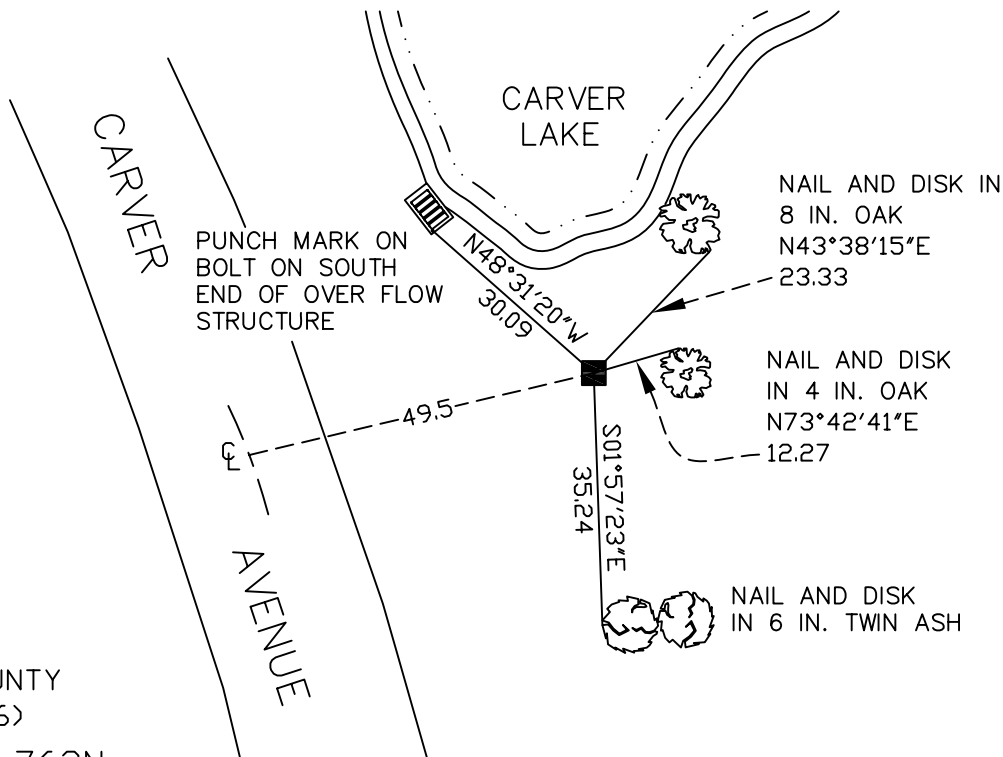
At the corner location shown on the sketch

On September 12, 2006 found a granite monument, down 18 inches.

left monument as found     lowered monument     removed monument (explain)

On \_\_\_\_\_ placed a \_\_\_\_\_

## SKETCH OF REFERENCE TIES



RAMSEY COUNTY  
NAD83 (1986)  
MONUMENT 762N

X= 603397.710 (Easting)  
Y= 141618.685 (Northing)

ALL DISTANCES ARE SHOWN IN U.S. SURVEY FEET.  
BEARINGS ARE FOR TIE REFERENCE PURPOSES ONLY.

Statements of evidence relative to this corner are on the following page(s).

I hereby certify that this document and the data contained herein was prepared by me or under my direct supervision this \_\_\_\_\_ day of \_\_\_\_\_, 20\_\_\_\_.

SIGNATURE

Minnesota License No. \_\_\_\_\_

- County Surveyor  
 Deputy County Surveyor     Land Surveyor

OFFICE OF COUNTY SURVEYOR  
County of Ramsey

I hereby certify that this document was filed in the County Surveyor's office on the \_\_\_\_ day of \_\_\_\_\_, 20\_\_\_\_.

David D. Claypool, P.L.S., County Surveyor

By \_\_\_\_\_, Deputy

# MONUMENT 762N

Meander Corner No. 14 (also know as Meander Corner No. 47) position set lost, August 20, 1897.

Monument set, September 2, 1897.

Found granite monument down +/- 6 in. and retied, February 18, 1976.

Retied granite monument, down +/- 18 in.; set sign and post +/- 1 ft. east, April 18, 2001.

Retied monument, September 12, 2006.