

MONUMENT 716W

CERTIFICATE OF LOCATION OF GOVERNMENT CORNER

Witness Monument to the East Quarter Corner of Section 13, Township 28 North, Range 22 West, County of Ramsey, State of Minnesota.

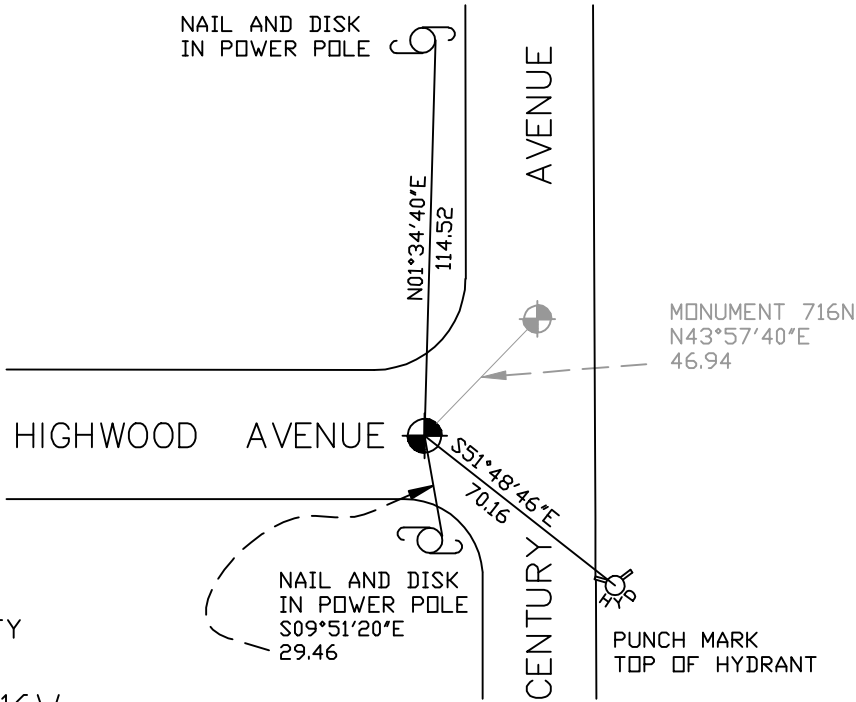
At the corner location shown on the sketch

On August 22, 2006 found a cast iron monument within a cast iron manhole assembly.

left monument as found lowered monument removed monument (explain)

On _____ placed a _____

SKETCH OF REFERENCE TIES



RAMSEY COUNTY
NAD83 (1986)
MONUMENT 716W

X= 603330.501 (Easting)
Y= 144521.178 (Northing)

ALL DISTANCES ARE SHOWN IN U.S. SURVEY FEET.
BEARINGS ARE FOR TIE REFERENCE PURPOSES ONLY.

Statements of evidence relative to this corner are on the following page(s).

I hereby certify that this document and the data contained herein was prepared by me or under my direct supervision this _____ day of _____, 20____.

SIGNATURE

Minnesota License No. _____

County Surveyor Land Surveyor

OFFICE OF COUNTY SURVEYOR

County of Ramsey

I hereby certify that this document was filed in the County Surveyor's office on the ____ day of _____, 20____.

David D. Claypool, P.L.S., County Surveyor

By _____, Deputy

MONUMENT 716W

Found iron in blacktop over granite monument, down 6 in., August 5, 1974.

Placed a short (4 3/8 in.) cast iron monument, July 8, 1975.

Retied monument, February 18, 1976.

Cities of Maplewood and Woodbury projects destroyed monument. Manhole found at monument location. Traversed to reset, checked ties, set witness monument 33 ft. west on line, down 16 in. below surface and P.K. nail on surface, April 15, 1999.

Set a cast iron manhole assembly over monument, 1999.

Retied monument, April 10, 2001.

Retied monument, August 22, 2006.