

# MONUMENT 716N

## CERTIFICATE OF LOCATION OF GOVERNMENT CORNER

Witness Monument to the East Quarter Corner of Section 13, Township 28 North, Range 22 West, County of Ramsey, State of Minnesota.

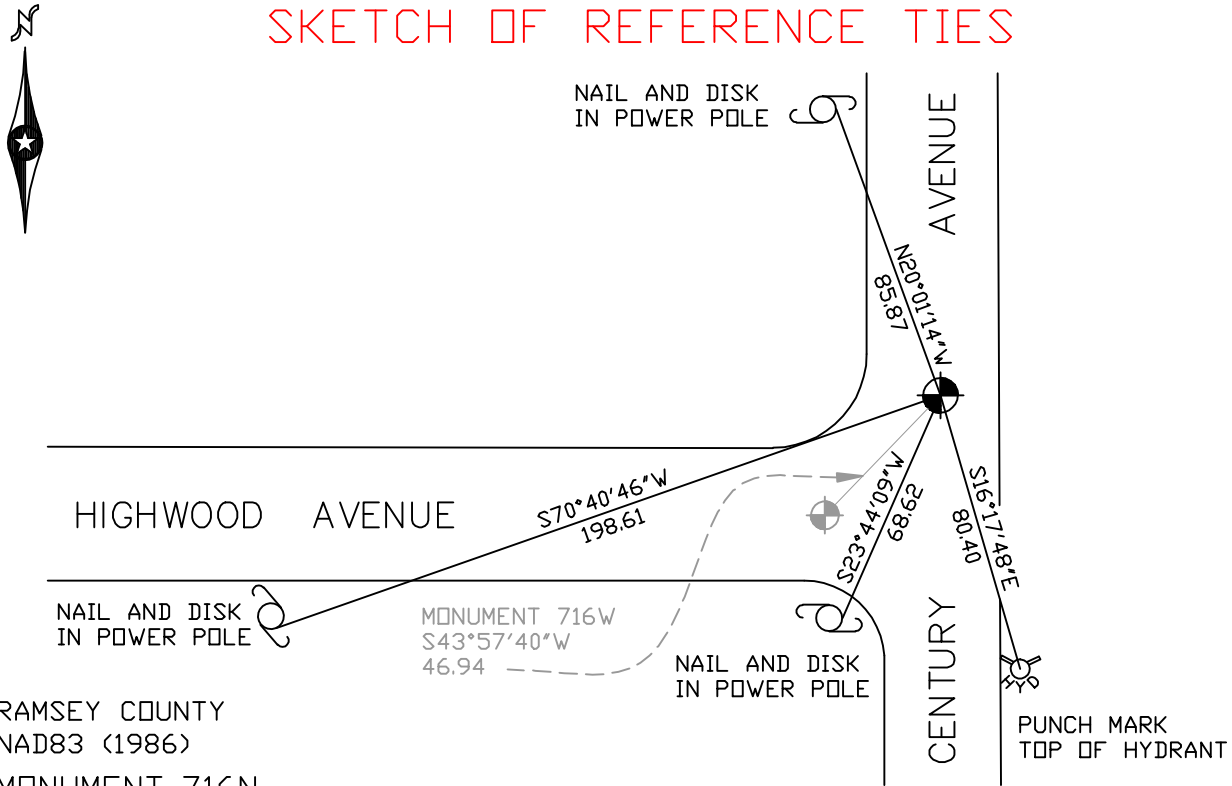
At the corner location shown on the sketch

On August 22, 2006 found a cast iron monument within a cast iron manhole assembly.

left monument as found     lowered monument     removed monument (explain)

On \_\_\_\_\_ placed a \_\_\_\_\_

## SKETCH OF REFERENCE TIES



RAMSEY COUNTY  
NAD83 (1986)  
MONUMENT 716N

X= 603363.110 (Easting)  
Y= 144554.986 (Northing)

ALL DISTANCES ARE SHOWN IN U.S. SURVEY FEET.  
BEARINGS ARE FOR TIE REFERENCE PURPOSES ONLY.

Statements of evidence relative to this corner are on the following page(s).

I hereby certify that this document and the data contained herein was prepared by me or under my direct supervision this \_\_\_\_\_ day of \_\_\_\_\_, 20\_\_\_\_.

SIGNATURE

Minnesota License No. \_\_\_\_\_

County Surveyor     Land Surveyor

OFFICE OF COUNTY SURVEYOR

County of Ramsey

I hereby certify that this document was filed in the County Surveyor's office on the \_\_\_\_ day of \_\_\_\_\_, 20\_\_\_\_.

David D. Claypool, P.L.S., County Surveyor

By \_\_\_\_\_, Deputy

## MONUMENT 716N

**Found iron in blacktop over granite monument, down 6 in., August 5, 1974.**

**Placed a short (4 3/8 in.) cast iron monument, July 8, 1975.**

**Retied monument, February 18, 1976.**

**Cities of Maplewood and Woodbury projects destroyed monument. Manhole found at monument location. Traversed to reset, checked ties, set witness monument 33 ft. north on line, down 16 in. below surface and set P.K. nail on surface, April 15, 1999.**

**Set a cast iron manhole assembly over monument, 1999.**

**Retied monument, April 10, 2001.**

**Retied monument, August 22, 2006.**