

MONUMENT 714

CERTIFICATE OF LOCATION OF GOVERNMENT CORNER

West Quarter Corner of Section 13, Township 28 North, Range 22 West, County of Ramsey, State of Minnesota.

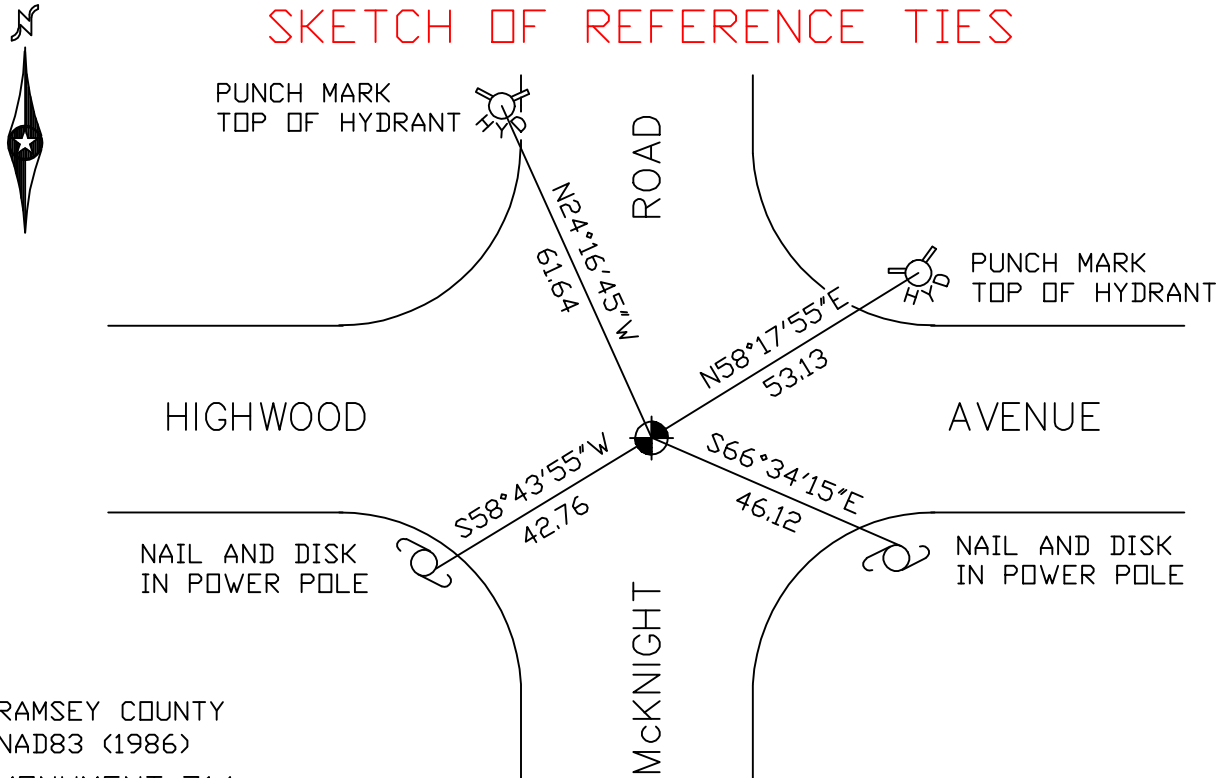
At the corner location shown on the sketch

On September 7, 2006 found cast iron monument, flush.

left monument as found lowered monument removed monument (explain)

On _____ placed a _____

SKETCH OF REFERENCE TIES



RAMSEY COUNTY
NAD83 (1986)
MONUMENT 714

X= 598120.709 (Easting)
Y= 144394.998 (Northing)

ALL DISTANCES ARE SHOWN IN U.S. SURVEY FEET.
BEARINGS ARE FOR TIE REFERENCE PURPOSES ONLY.

Statements of evidence relative to this corner are on the following page(s).

I hereby certify that this document and the data contained herein was prepared by me or under my direct supervision this _____ day of _____, 20____.

SIGNATURE

Minnesota License No. _____

County Surveyor Land Surveyor

OFFICE OF COUNTY SURVEYOR

County of Ramsey

I hereby certify that this document was filed in the County Surveyor's office on the ____ day of _____, 20____.

David D. Claypool, P.L.S., County Surveyor

By _____, Deputy

MONUMENT 714

Found a cast iron monument flush and retied, August 5, 1974.

**Monument destroyed by sewer construction, set P.K. nail and retied,
June 4, 1993.**

Reset a 20 in. cast iron monument, August, 1994.

Retied monument, April 13, 2001.

Retied monument, September 7, 2006.