

# MONUMENT 693

## CERTIFICATE OF LOCATION OF GOVERNMENT CORNER

Northeast Corner of Section 13, Township 28 North, Range 22 West, County of Ramsey, State of Minnesota.

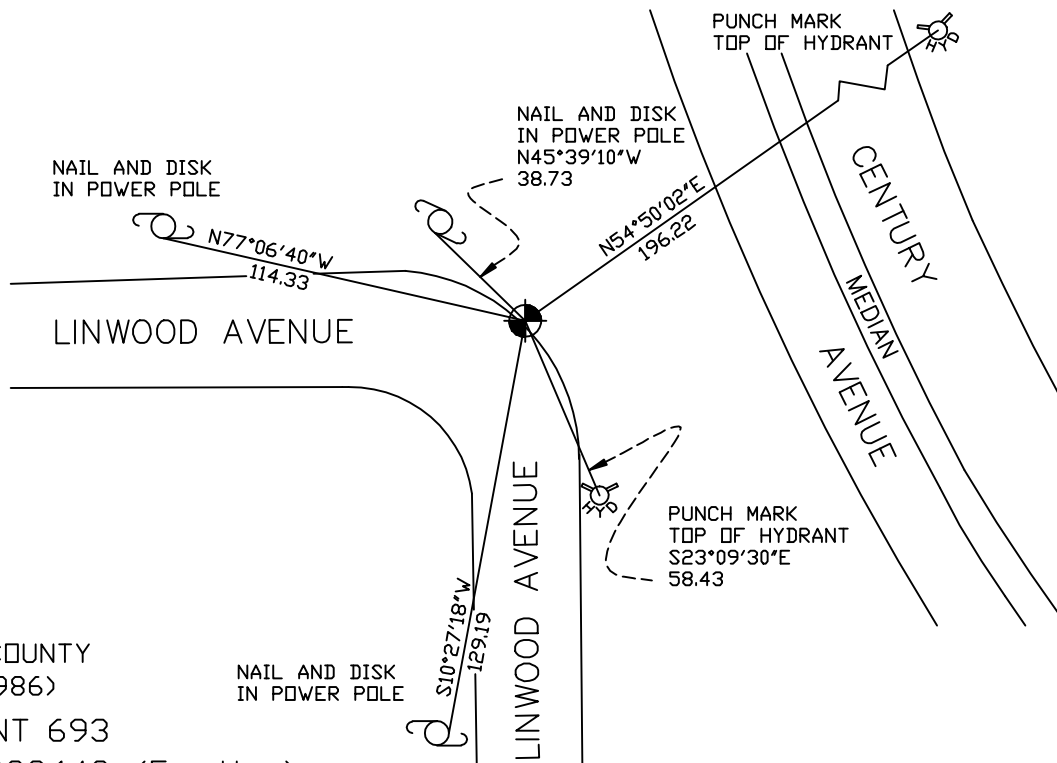
At the corner location shown on the sketch

On August 4, 2006 found a cast iron monument.

left monument as found     lowered monument     removed monument (explain)

On \_\_\_\_\_ placed a \_\_\_\_\_

### SKETCH OF REFERENCE TIES



RAMSEY COUNTY  
NAD83 (1986)  
MONUMENT 693

X= 603333.142 (Easting)  
Y= 147151.960 (Northing)

ALL DISTANCES ARE SHOWN IN U.S. SURVEY FEET.  
BEARINGS ARE FOR TIE REFERENCE PURPOSES ONLY.

Statements of evidence relative to this corner are on the following page(s).

I hereby certify that this document and the data contained herein was prepared by me or under my direct supervision this \_\_\_\_\_ day of \_\_\_\_\_, 20\_\_\_\_.

SIGNATURE

Minnesota License No. \_\_\_\_\_

County Surveyor     Land Surveyor

OFFICE OF COUNTY SURVEYOR

County of Ramsey

I hereby certify that this document was filed in the County Surveyor's office on the \_\_\_\_ day of \_\_\_\_\_, 20\_\_\_\_.

David D. Claypool, P.L.S., County Surveyor

By \_\_\_\_\_, Deputy

## MONUMENT 693

**Found iron in concrete over granite monument. Placed short cast iron monument, July 8, 1975.**

**Retied monument, February 18, 1976.**

**Tied out monument for removal by maintenance department, May 13, 1996.**

**Maintenance department set manhole; found road water drained into manhole; decided to remove manhole, no date given in field book.**

**Set a 20 inch cast iron monument flush, August 5, 1997.**

**Removed cast iron monument for sewer construction, July 15, 1998.**

**Reset a 20 inch cast iron monument flush with curb, June 29, 1999.**

**Retied monument, April 10, 2001.**

**Retied monument, August 4, 2006.**