

MONUMENT 669

CERTIFICATE OF LOCATION OF GOVERNMENT CORNER

Center of Section 12, Township 28 North, Range 22 West, County of Ramsey,
State of Minnesota.

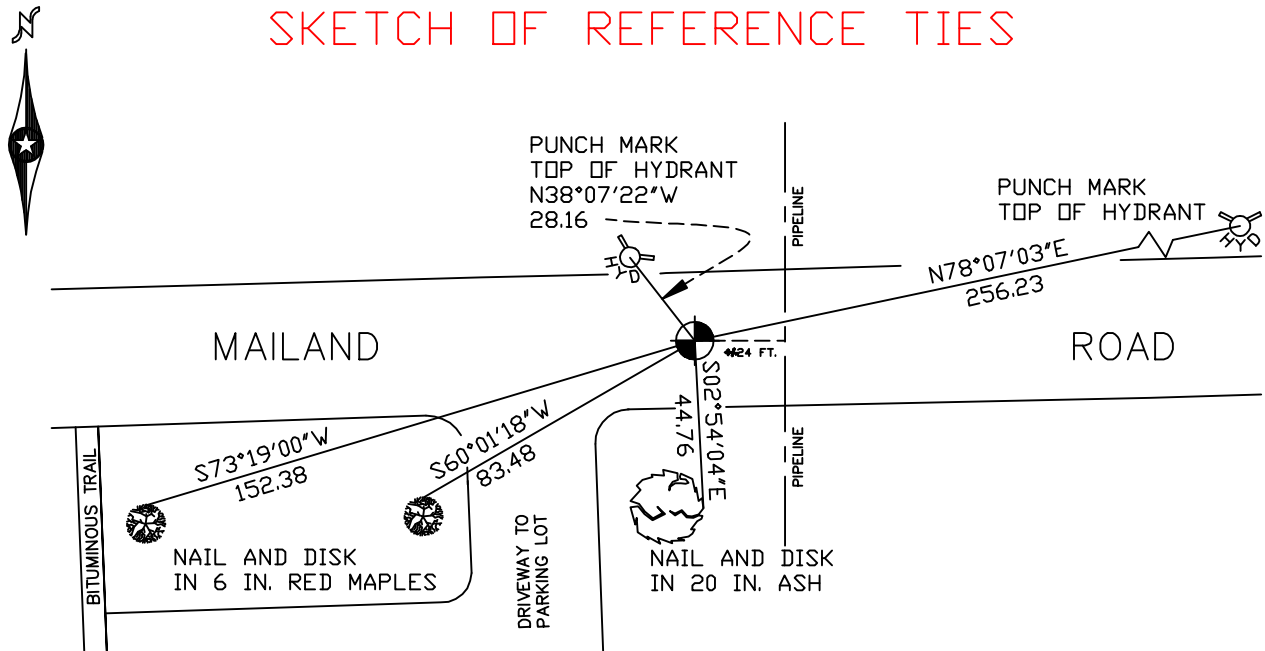
At the corner location shown on the sketch

On September 7, 2006 found a cast iron monument within a cast iron manhole assembly.

left monument as found lowered monument removed monument (explain)

On _____ placed a _____

SKETCH OF REFERENCE TIES



RAMSEY COUNTY
NAD83 (1986)

MONUMENT 669

X= 600678.476 (Easting)
Y= 149719.028 (Northing)

ALL DISTANCES ARE SHOWN IN U.S. SURVEY FEET.
BEARINGS ARE FOR TIE REFERENCE PURPOSES ONLY.

Statements of evidence relative to this corner are on the following page(s).

I hereby certify that this document and the data contained herein was prepared by me or under my direct supervision this _____ day of _____, 20____.

SIGNATURE

Minnesota License No. _____

County Surveyor Land Surveyor

OFFICE OF COUNTY SURVEYOR

County of Ramsey

I hereby certify that this document was filed in the County Surveyor's office on the ____ day of _____, 20____.

David D. Claypool, P.L.S., County Surveyor

By _____, Deputy

MONUMENT 669

Found a granite monument up +/- 7 in. and retied, August 5, 1974.

Monument destroyed by construction; set a cast iron monument, 1980.

Tied out for the City of Maplewood construction, July 31, 1997.

Removed cast iron monument, August 26, 1997.

Set a 20 in. cast iron monument down 18 in. within a cast iron manhole assembly, 1998.

Retied monument, April 18, 2001.

Retied monument, September 7, 2006.